

4

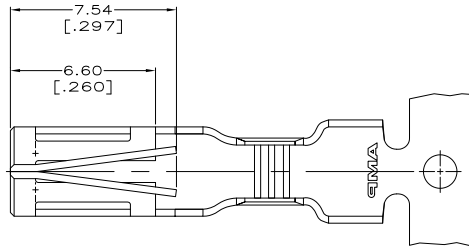
3

2

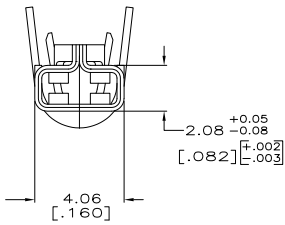
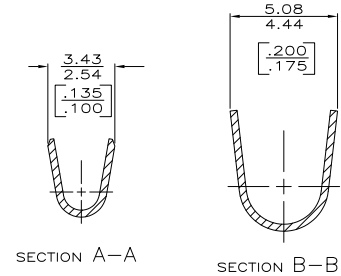
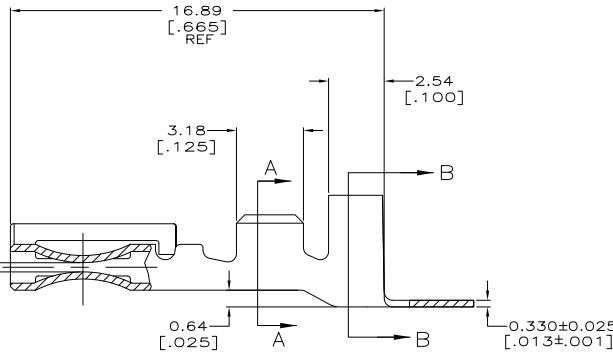
1

THIS DRAWING IS UNPUBLISHED. RELEASED FOR PUBLICATION. BY TYCO ELECTRONICS CORPORATION. ALL INTERNATIONAL RIGHTS RESERVED.

LOC	DIST	REVISIONS		
F	LNK	DESCRIPTION	DATE	BY
AF	50			
	E3	REVISED PER ECR-08-031605	17DEC08	HMR EH



- 1 CONTINUOUS STRIP ON REEL.
- 2 INSULATION RANGE
(1) [#18] AWG - 2.84 [.112] AND
(1) [#16] AWG - 3.12 [.123] MAX DIA.
- 3 WIRE SIZE IS [#20-#14] AWG.
- 4 PRELIMINARY - NOT FOR PRODUCTION.
- 5 LUBRICATION NEEDS TO BE APPLIED DURING TERMINATION.
- 6 TERMINAL IS SUPPLIED LUBRICATED TO AID TERMINATION.



6	0.002032 [.000080] MIN TIN	H06 BRASS	4	1217039-4
5	0.00330 [.000130] MAX PRE-TIN	H06 COPPER ALLOY	4	1217039-3
5	0.00381 [.000150] MIN NICKEL	H08 COPPER ALLOY	4	1217039-2
5	0.002032 [.000080] MIN TIN	H06 BRASS		1217039-1
LUBRICATION	FINISH	MATERIAL	PART NUMBER	

THIS DRAWING IS A CONTROLLED DOCUMENT.		DRW: PHILLIP M. FORTNEY 05/02/97	Tyco Electronics Corporation Harrisburg, PA 17105-3608	
DIMENSIONS: mm [INCHES]		CHK: JEFF R. RUTH 05/02/97	APPC: DON DECKER 05/02/97	
TOLERANCES UNLESS OTHERWISE SPECIFIED:		NAME: TERMINAL, TIMER CONNECTOR		
0 PLG	±	APPLICATION SPEC:	SIZE: A2	CAGE CODE: 00779
1 PLG	±	PRODUCT SPEC:	DRAWING NO: C=1217039	RESTRICTED TO:
2 PLG	±			
3 PLG	± 0.25 (010)			
4 PLG	±			
ANGLES	±	WEIGHT:		
MATERIAL: SEE TABLE	FINISH: SEE TABLE	CUSTOMER DRAWING	SCALE: 8:1	SHEET: 1 of 1