

4

3

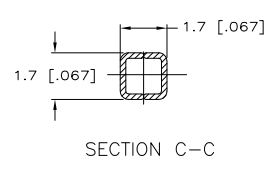
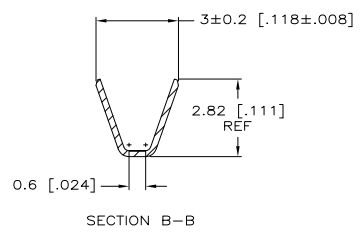
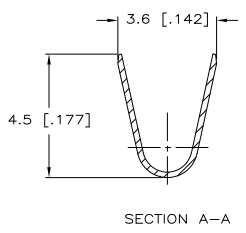
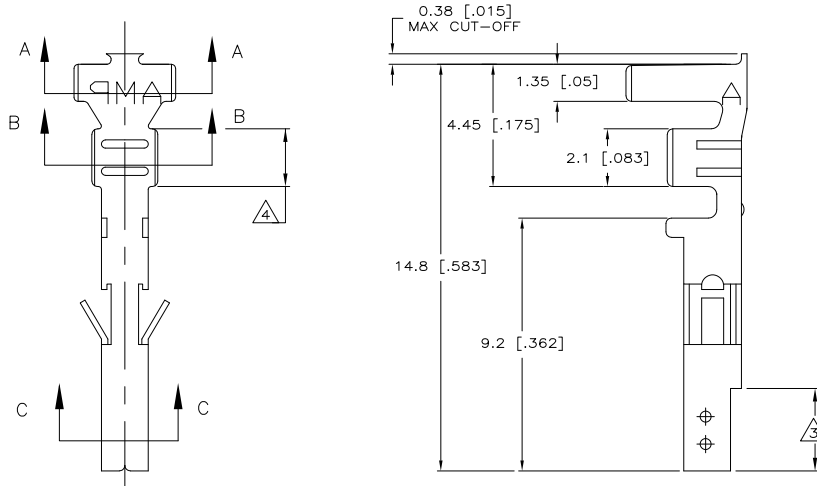
2

1

THIS DRAWING IS UNPUBLISHED. RELEASED FOR PUBLICATION
 BY TYCO ELECTRONICS CORPORATION. ALL RIGHTS RESERVED.

LOC	DIST	REVISIONS		DATE	BY	APP'D
		F	LNK			
		B1	REVISED PER ECO-08-027061	05NOV08	HMR	CC

1. WIRE RANGE: 1.31mm² (16 AWG).
 2. INSULATION RANGE 3.10 [.122] MAXIMUM DIAMETER
- △3 FINISH: 0.76µm MINIMUM GOLD OVER 1.27µm MINIMUM NICKEL REQUIRED ON INNER SURFACE, PERMITTED ON OUTER SURFACE.
- △4 FINISH: 2.54µm MINIMUM TIN ON ALL SURFACES IN THIS AREA.



METRIC

GOLD △3/△4	PHOS. BRZ.	1586841-4
PRE-TIN	PHOS. BRZ.	1586841-3
GOLD △3/△4	BRASS	1586841-2
PRE-TIN	BRASS	1586841-1
FINISH:	MATERIAL:	PART NO.

THIS DRAWING IS A CONTROLLED DOCUMENT.		DWG: K. WHITAKER 04MR2007 CHK: C. CASH 04MR2007 C. CASH 04MR2007 NAME: C. CASH TITLE: PRODUCT SPEC		Tyco Electronics Corporation Harrisburg, PA 17105-3608	
DIMENSIONS: mm [INCHES] TOLERANCES UNLESS OTHERWISE SPECIFIED: 0 PL. ± # 1 PL. ± .02 [p1] 2 PL. ± 0.13 [500] 3 PL. ± 0.254 [0100] 4 PL. ± # ANGLES ± #		APPLICATION SPEC: WEIGHT: FINISH:		SIZE: A2 CASE CODE: 00779 DRAWING NO: C=1586841 RESTRICTED TO: -	
MATERIAL:		CUSTOMER DRAWING		SCALE: 10:1 SHEET: 1 of 1 REV: B1	

AMP 1471-9 REV 31MMR2000

1586841

A