

4

3

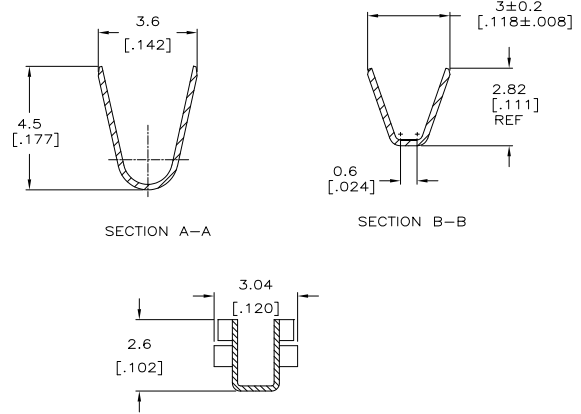
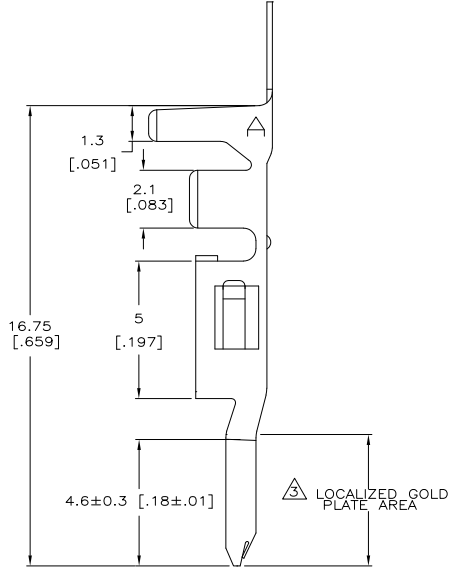
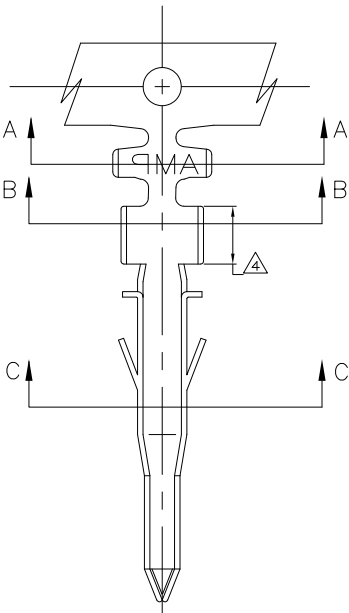
2

1

THIS DRAWING IS UNPUBLISHED. RELEASED FOR PUBLICATION. BY TYCO ELECTRONICS CORPORATION. ALL RIGHTS RESERVED.

LOC	DIST	REVISIONS		DATE	BY	APPD
CM	00	F	LR			
		C1		REVISED PER ECR-10-013247	25JUN10	HMR KR

- 1 WIRE RANGE: 1.31mm<sup>2</sup> (16 AWG)
- 2 INSULATION RANGE: 3.10 [.122] DIA.
- 3 FINISH: 0.76µm [.000030 in] GOLD IN LOCALIZED GOLD PLATE AREA OVER 1.27µm [.00005 in] MINIMUM NICKEL.
- 4 FINISH: 2.54µm [.00001 in] MINIMUM TIN IN LOCALIZED TIN PLATE AREA.
- 5 FINISH: 2.54µm [.00001 in] MINIMUM PRE-TIN ALL OVER.



GOLD 3 4	PHOS. BRZ.	1586054-4
PRE-TIN 5	PHOS. BRZ.	1586054-3
GOLD 3 4	BRASS	1586054-2
PRE-TIN 5	BRASS	1586054-1
FINISH	MATERIAL	PART NO.

METRIC

THIS DRAWING IS A CONTROLLED DOCUMENT.		DRN S. HOOVER 17-NOV-2004	Tyco Electronics Corporation
DIMENSIONS: mm [INCHES]		CHK D. COLEY 17-NOV-2004	Harrisburg, PA 17105-3608
TOLERANCES UNLESS OTHERWISE SPECIFIED:		APPD D. COLEY 17-NOV-2004	NAME
0 PLC	±	PRODUCT SPEC	TERMINAL, PIN
1 PLC	±		VAL-U-LOK(TM)
2 PLC	±		
3 PLC	± 0.13 [0.005]		
4 PLC	±		
ANGLES	± 0.30°		
MATERIAL	FINISH	APPLICATION SPEC	SIZE CASE CODE DRAWING NO
		HEIGHT	A2 00779 C=1586054
		CUSTOMER DRAWING	RESTRICTED TO
			SCALE 10:1 SHEET 1 of 1 REV C1

AMP 1471-9 REV 31MMR2000

1586054

A