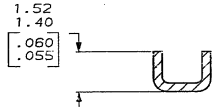
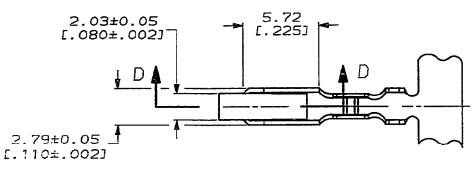


DRAWING MADE IN THIRD ANGLE PROJECTION

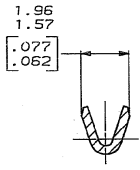
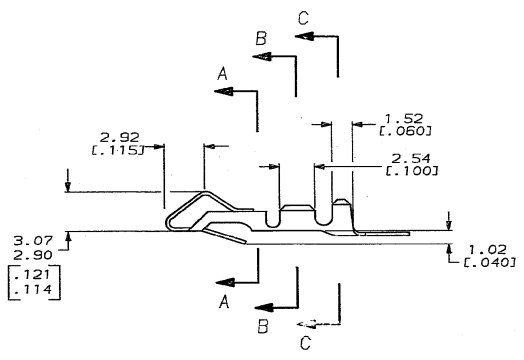
THIS DRAWING IS UNPUBLISHED. RELEASED FOR PUBLICATION .19
 © COPYRIGHT 19 BY AMP INCORPORATED. ALL INTERNATIONAL RIGHTS RESERVED.

LOC		DIST		ZONE		LTR		REVISIONS		DATE	APPD
CM	54							F	REV & REDRAWN PER ECN CM-11	11-9-92	KS

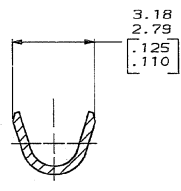
- 0.00330 [.000130] MAX PRE-TIN.
- WIRE RANGE: 0.05-0.2mm² (30-24 AWG).
INSULATION RANGE: 1.02-1.45 [.040-.110] DIA.
- DIMENSIONS IN BRACKETS ARE IN INCHES.



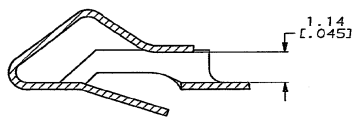
SECTION A-A
SCALE 10:1



SECTION B-B
SCALE 10:1



SECTION C-C
SCALE 10:1



SECTION D-D
SCALE 10:1

METRIC

THIS DRAWING IS A CONTROLLED DOCUMENT FOR AMP INCORPORATED. IT IS SUBJECT TO CHANGE AND THE CONTROLLING ENGINEERING ORGANIZATION SHOULD BE CONTACTED FOR THE LATEST REVISION.

△	641550-1
FINISH	PART NO

DO NOT SCALE PRINT. UNLESS SPECIFIED DIMENSIONS IN mm (INCHES) TOLERANCES ON: 2 PL. DEC ± 0.13 (.005) 3 PL. DEC ± ANGLES ±	DR 11-2-92 K. SALMON	AMP Incorporated Harrisburg, PA 17105-3808
MATERIAL 0.33 [.013] BRASS	CHK 11-2-92 R. SWING	
FINISH SEE TABLE	APPD 11-20-92 E. BEILES	NAME RECEPTACLE, SL-156
	APPD - PRODUCT SPEC - APPLICATION SPEC - WEIGHT -	SIZE CAGE CODE DRAWING NO SCALE
		00779 C-641550 5:1
		SHEET 1 OF 1