

4

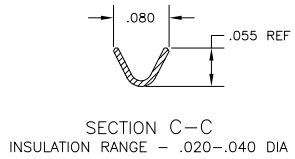
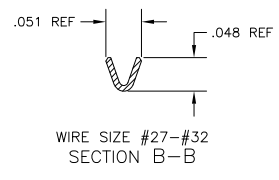
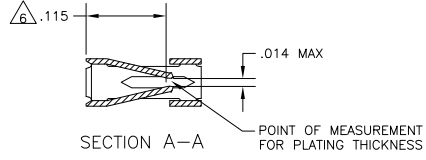
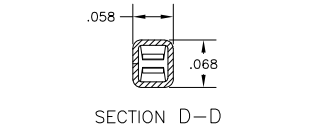
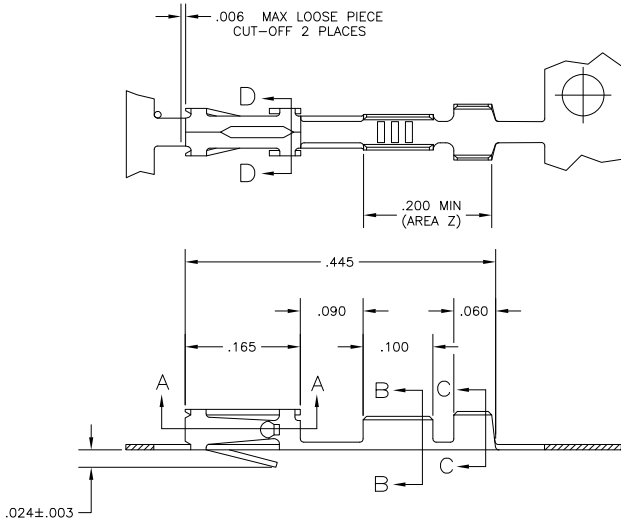
3

2

1

THIS DRAWING IS UNPUBLISHED. RELEASED FOR PUBLICATION
 BY TYCO ELECTRONICS CORPORATION. ALL RIGHTS RESERVED.

LOC	DIST	REVISIONS		
P	LTR	DESCRIPTION	DATE	MIN
AD	00			APD
G		ECO-05-007262	09JAN06	BSV MM



- 1 .000030 ON CONTACT AREA, .000100-.000200 93/7 TIN LEAD IN CRIMP AREA "Z", ALL OVER .000050 NICKEL.
- 2. REELED FOR MINI APPLICATOR.
- 3. SHEARED EDGES PERMITTED TO BE UNPLATED.
- 4 .000015 GOLD IN AREA "K", .000100-.000200 BRIGHT TIN-LEAD IN AREA "Z", ALL OVER .000050 NICKEL.
- 5 .000015 GOLD IN CONTACT AREA, .000050 NICKEL ENTIRE CONTACT.
- 6. POINT OF MEASUREMENT FOR PLATING THICKNESS (INSIDE BEAMS)
- 7 .000030 ON CONTACT AREA, .000100-.000200 MATTE TIN IN CRIMP AREA "Z", ALL OVER .000050 NICKEL.

REVISIONS	REMARKS	FINISH	PART NUMBER
	LOOSE PIECE	△△	5-102920-2
	LOOSE PIECE	△△	5-102920-1
OBSOLETE	LOOSE PIECE	△△	102920-8
OBSOLETE	LOOSE PIECE	△△	102920-7
OBSOLETE	LOOSE PIECE	△△	102920-5
OBSOLETE	LOOSE PIECE	△△	102920-4
	LOOSE PIECE	△△	102920-2
	LOOSE PIECE	△△	102920-1

THIS DRAWING IS A CONTROLLED DOCUMENT.

DESIGNED BY: KATE HELM	DATE: 03MAY99	Tyco Electronics Corporation Harrisburg, Pa 17105-3608
CHECKED BY: J. OBERMAN	DATE: 02JUN99	
APPROVED BY: J. GEFORD	DATE: 02JUN99	
PRODUCT SPEC: 108-25021	APPLICATION SPEC: 114-25003	SIZE: A2
MATERIAL: CU-SN-P ALLOY 521 JOB THK. COM.	FINISH: SEE TABLE	DATE: 00779
		SCALE: 10:1
		SHEET: 1 OF 1
		REV: G

CUSTOMER DRAWING