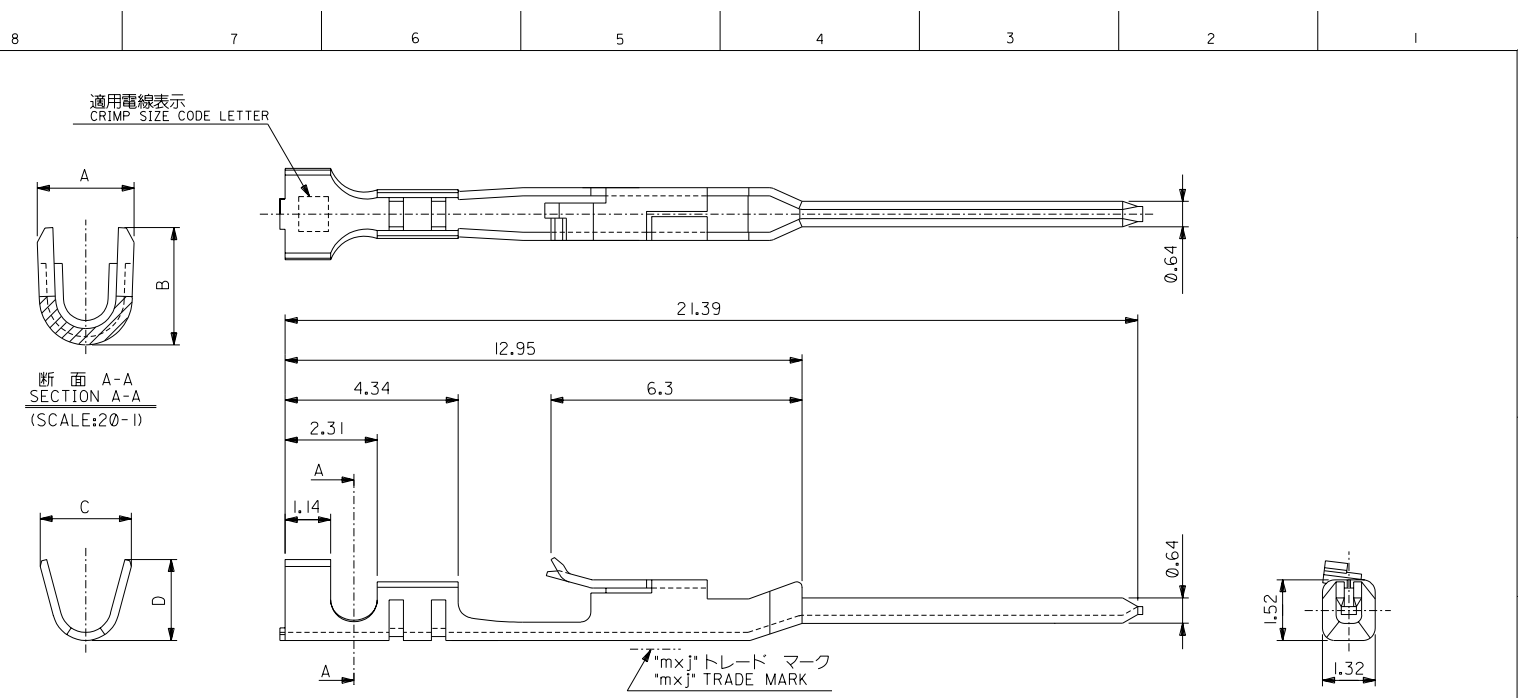


ENG. NO. 0-04
SD-70021-0-21

EDP NO.

MM DIMENSIONS IN METRIC DO NOT SCALE DRAWING

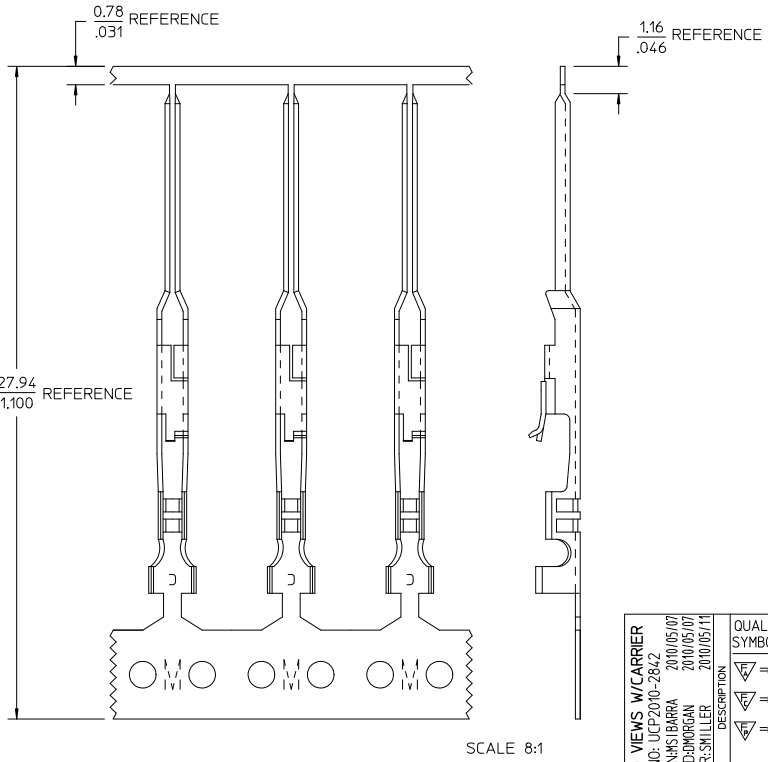
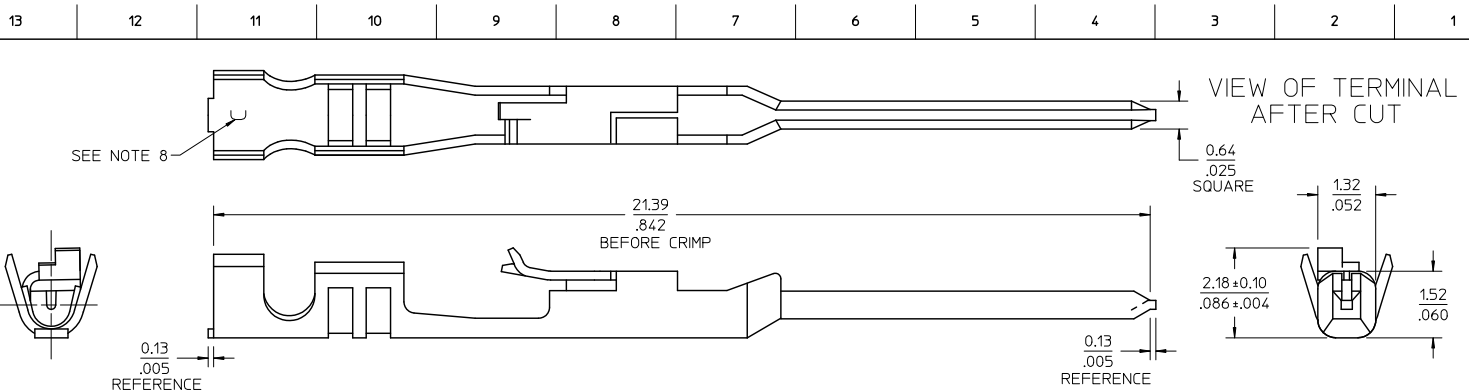


注記:
NOTES:

- 適合ハウジング: 70066-****, 70107-****
APPLICABLE HOUSING: 70066-****, 70107-****
- 仕上げ ニッケル下地、鍍メッキ
FINISH TIN OVER NICKEL PLATING

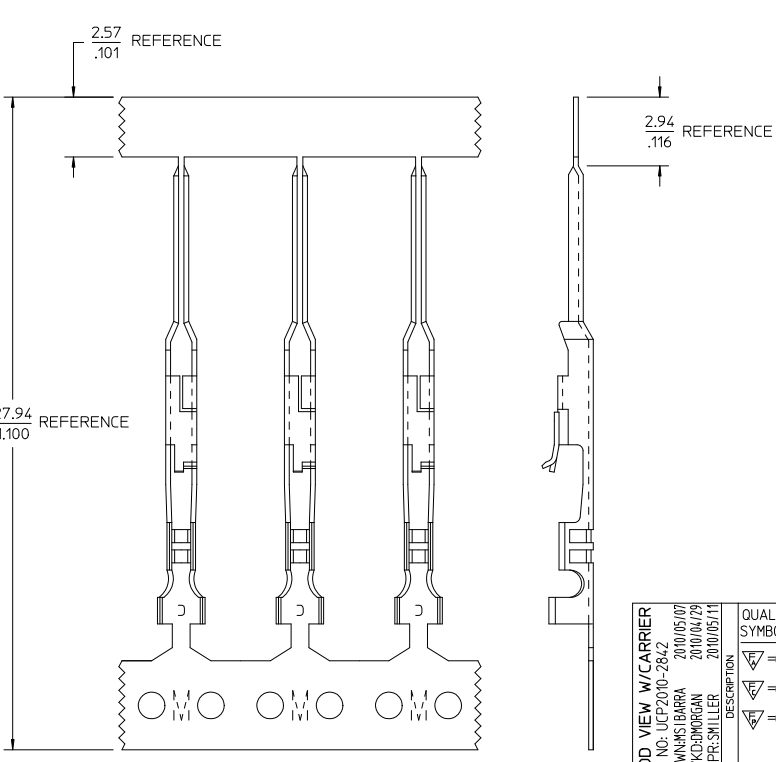
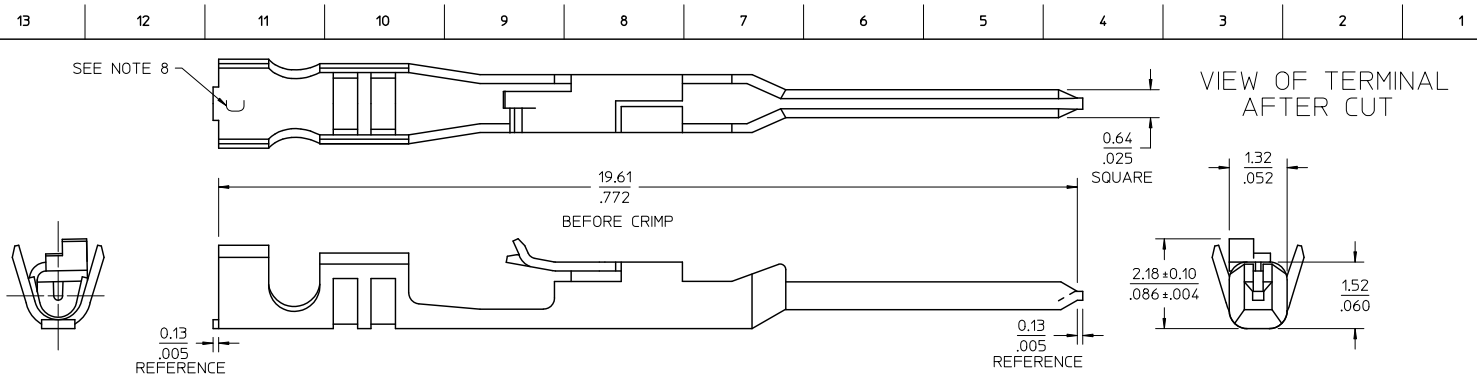
1.91	2.1	1.47	1.22	A	MAX. Ø 1.6	AWC#24-#30	バラ状 LOOSE	70021-0204
1.91	2.1	1.65	1.84	C		AWC#22-#24	バラ状 LOOSE	70021-0221
D	C	B	A	通用電線表示 CRIMP SIZE CODE LETTER	被覆外径 INS. RANGE	適用電線範囲 WIRE RANGE	端子形状 FORM	MATERIAL No.
				材料 MATERIAL	燐青銅 PHOSPHOR BRONZE	MOLEX	MOLEX-JAPAN CO.,LTD. 日本モレックス株式会社	
				仕上げ FINISH	注記参照 SEE NOTES	EDP NO.	—	
角度 ANGLE	+3°	B	変更 REVISED (12004-45)B	MS	04/05/13	適用電線範囲 WIRE RANGE	表参照 SEE CHART	ENG. NO. SD-70021-0-04
30以上 OVER	+0.5	A	変更 REVISED (T20)B5)	MS	19/12/20	被覆外径 INS. RANGE	表参照 SEE CHART	REV B
10以上 30未満 OVER UNDER	+0.25	0	新規作成 RELEASED (T00)10)	MS	20/4/6	DRAWN BY CHK'D BY	尺度 SCALE	TITLE 名称 SL MALE CRIMP TERMINAL -LEAD FREE-
10未満 UNDER	+0.2	記号 LTR	変更内容 REVISION RECORD	DR.	日付 CHK. DATE	APPRO BY SCALE	10-1	
一般公差 GENERAL TOLERANCES	REVISE ONLY ON CAD SYSTEM							

THIS DRAWING CONTAINS INFORMATION THAT IS PROPRIETARY TO MOLEX/JAPAN AND SHOULD NOT BE USED WITHOUT WRITTEN PERMISSION
本図面は日本モレックス(株)の所有する情報を含むもので、当社の許可なく複製を禁止する。 MXJ-8



- NOTES:
1. MATERIAL: PHOSPHOR BRONZE, 0.20/008 THICK
 2. FINISH: 3.81 MICROMETERS/150 MICROINCHES TIN OVER NICKEL UNDERPLATE OVERALL
 3. PRODUCT SPECIFICATION: PS-70021
 4. PACKAGING: PARTS SUPPLIED IN REEL FORM
 5. TERMINAL FOR USE WITH: 70066-**** & 70107-**** HOUSINGS
 6. TERMINAL TO BE USED WITH: 22-24 AWG STRANDED WIRE WITH .064 DIAMETER MAXIMUM INSULATION
 7. REFER TO MOLEX OPERATIONAL AND SERVICE MANUAL FOR DETAILS
 8. CRIMP SIZE INDICATOR: C=22-24 AWG

ADD VIEWS W/CARRIER EC NO.: LCP2010-2862 (M) DRWMS BARRA 2010/05/07 (C) HADNORDAN 2010/05/07 (A) PPR: SMILLER 2010/05/11	QUALITY SYMBOLS ∇=0 ∇=0 ∇=0	GENERAL TOLERANCES (UNLESS SPECIFIED)		DIMENSION STYLE		SCALE	DESIGN UNITS	THIRD ANGLE PROJECTION
		mm	INCH	IN/MM		INCH		
		4 PLACES ± .005	± .005	DRAWN BY	DATE	TITLE		
		3 PLACES ± .01	± .01	MS BARRA	2010/05/07	TERMINAL, MALE CRIMP		
2 PLACES ± .13	± .01	CHECKED BY	DATE					
1 PLACE ± 0.25	± .01	MJM	1986/10/30					
ANGULAR ± 1/2°		APPROVED BY	DATE	MOLEX INCORPORATED				
DRAFT WHERE APPLICABLE MUST REMAIN WITHIN DIMENSIONS		SMILLER	2010/05/11	MATERIAL NO.	DOCUMENT NO.	SHEET NO.		
				16-02-0107	SD-70021-0021	1 OF 1		
				THIS DRAWING CONTAINS INFORMATION THAT IS PROPRIETARY TO MOLEX INCORPORATED AND SHOULD NOT BE USED WITHOUT WRITTEN PERMISSION				



- NOTES:
1. MATERIAL: PHOSPHOR BRONZE, 0.20/008 THICK
 2. FINISH: 3.81 MICROMETERS/150 MICROINCHES TIN OVER NICKEL UNDERPLATE OVERALL
 3. PRODUCT SPECIFICATION: PS-70021
 4. PACKAGING: PARTS SUPPLIED IN REEL FORM
 5. TERMINAL FOR USE WITH: 70066-**** & 70107-**** HOUSINGS
 6. TERMINAL TO BE USED WITH: 22-24 AWG STRANDED WIRE WITH .064 DIAMETER MAXIMUM INSULATION
 7. REFER TO MOLEX OPERATIONAL AND SERVICE MANUAL FOR DETAILS
 8. CRIMP SIZE INDICATOR: C=22-24 AWG

ADD VIEW W/CARRIER EC NO.: LCEP2010-2862 DRWNS BARRA 2010/05/07 CHACONORDAN 2010/04/29 APPR: SMILLER 2010/05/11	QUALITY SYMBOLS ∇=0 ∇=0 ∇=0	GENERAL TOLERANCES (UNLESS SPECIFIED)		DIMENSION STYLE		SCALE	DESIGN UNITS	THIRD ANGLE PROJECTION	
		mm	INCH	MM/IN		15:1	INCH		
		4 PLACES ±---	±---	DRAWN BY	DATE	TITLE			
		3 PLACES ±---	±.010	MS BARRA	2010/04/29	TERMINAL, MALE CRIMP			
2 PLACES ±0.25	±.015	CHECKED BY	DATE	MATERIAL NO.					
1 PLACE ±0.35 ±---	±---	DMORGAN	2010/04/29	70021-1021					
ANGULAR ±1/2°		APPROVED BY	DATE	DOCUMENT NO.		SHEET NO.			
DRAFT WHERE APPLICABLE MUST REMAIN WITHIN DIMENSIONS		SMILLER	2010/05/11	SD-70021-1021		1 OF 1			
THIS DRAWING CONTAINS INFORMATION THAT IS PROPRIETARY TO MOLEX INCORPORATED AND SHOULD NOT BE USED WITHOUT WRITTEN PERMISSION									

SCALE 8:1