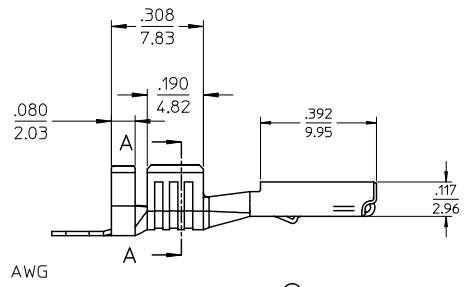
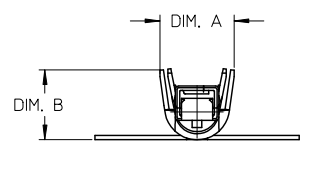
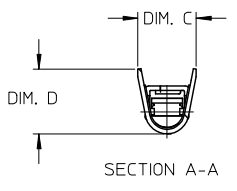
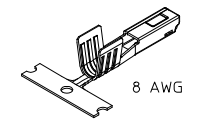
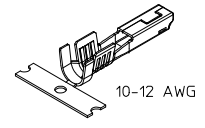
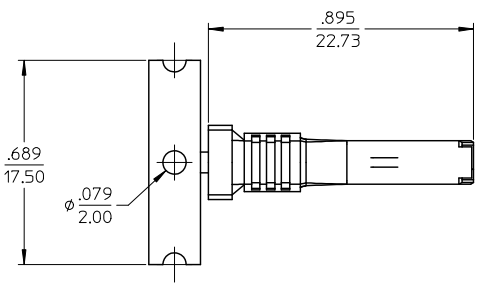
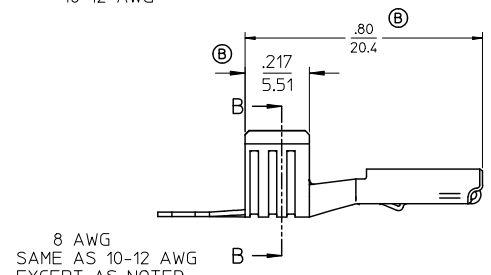
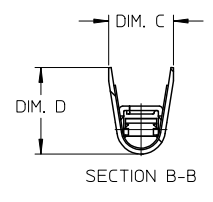
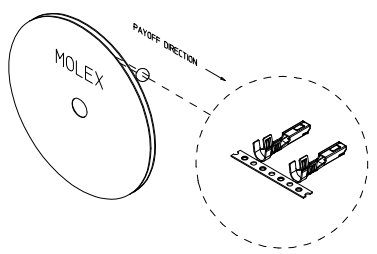


	12	11	10	9	8	7	6	5	4	3	2	19434
STRIP MATERIAL NUMBER	LOOSE PIECE MATERIAL NUMBER	AWG SIZE	DIM. 'A'	DIM. 'B'	DIM. 'C'	DIM. 'D'						
194340001	194340003	10-12	.250/6.35	.236/6.00	.197/5.00	.220/5.60						
194340002	194340004	8	N/A	N/A	.240/6.10	.276/7.00						



10-12 AWG



8 AWG
SAME AS 10-12 AWG
EXCEPT AS NOTED

- NOTES:
1. MATERIAL: COPPER ALLOY.
 2. FINISH: PREPLATED AND REFLOWED OVERALL. 100μ TIN OVER 50μ NICKEL, MINIMUM.
 3. TERMINALS FOR USE WITH 19432**** RECEPTACLE HOUSING ASSEMBLY.
 4. PRODUCT SPECIFICATION: PS-19431-001.
 5. PACKAGING SPECIFICATION: PK-19434-001.
 6. APPLICATION TOOLING AND CRIMP SPECIFICATIONS: CONSULT FACTORY

UPDATED DIMS & NOTES EC NO: WNA2009-0796 DRW: BRUPERT, 2005/10/05 CHKD: JPAWLICK/09/06/04 APPR: RDEROSS, 2009/07/10	QUALITY SYMBOLS -0 -0	GENERAL TOLERANCES (UNLESS SPECIFIED)		SCALE 4:1	DESIGN UNITS INCH	THIRD ANGLE PROJECTION	REVISE ON CAD ONLY		
				DIMENSION STYLE IN/MM		TITLE			
		4 PLACES ± --- ± ---		DRAWN BY BRUPERT		DATE 01/25/05		FEMALE RECEPTACLE MX150L	
		3 PLACES ± --- ± .010		CHECKED BY JPAWLICK		DATE 01/25/05		TERMINAL, 10-12.8 AWG	
2 PLACES ± 0.25 ± .02		APPROVED BY RDEROSS		DATE 01/25/05		AWG, .098/2.50X.031/0.79			
1 PLACE ± 0.5 ± ---		DRAFT WHERE APPLICABLE		MATERIAL NO. SEE CHART		DOCUMENT NO. SD-19434-001			
ANGULAR ± 3°		MUST REMAIN WITHIN DIMENSIONS		SHEET NO. 1 OF 1		MOLEX INCORPORATED			
THIS DRAWING CONTAINS INFORMATION THAT IS PROPRIETARY TO MOLEX INCORPORATED AND SHOULD NOT BE USED WITHOUT WRITTEN PERMISSION									

tb_frame_C-B1
rev. B1 2000/08/01

	11	10	9	8	7	6	5	4	3	2	1
--	----	----	---	---	---	---	---	---	---	---	---