

2478- \* - \* - \*

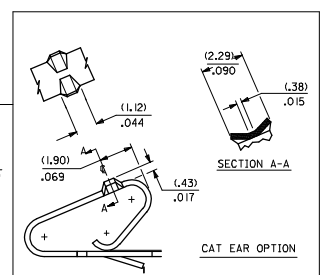
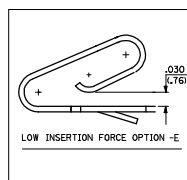
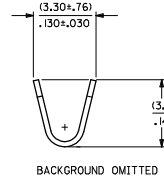
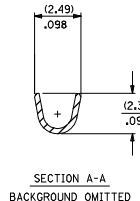
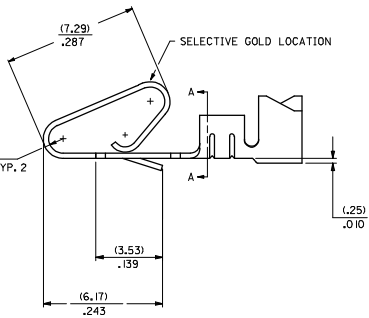
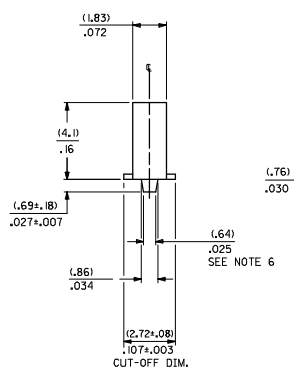
MATERIAL CODE  
L=27/.0106 THK  
I=BRASS  
3=PHOS BRONZE

OPTION CODE  
BLANK=AS SHOWN  
C=CAT EAR OPTION  
D=OPTIONAL CONDUCTOR CRIMP (FOR IRELAND)  
(SEE OPT. SECTION A-A) WITHOUT CAT EARS  
E=LOW INSERTION FORCE OPTION

WINDING SPEC.  
A=PER ES-339-A  
BLANK=PER ES-339-B  
L=LOOSE

FINISH: PER SDES-88  
(P909) \*OVERALL HOT TIN DIP: 2.54 MICROMETERS MIN.  
(550) SELECT GOLD: 0.38 MICROMETERS MIN.  
OVERALL GOLD FLASH: 0.05 MICROMETERS MIN.  
OVERALL NICKEL UNDERPLATE: 0.76 MICROMETERS MIN.  
(555) SELECT GOLD: 0.38 MICROMETERS MIN.  
OVERALL NICKEL UNDERPLATE: 0.76 MICROMETERS MIN.

\*THE PRIMARY SHIPPING CARTON WILL BE LABELED 'COMPLIANT TO RoHS DIRECTIVE 2002/95/EC AND ELV ANNEX II OF DIRECTIVE 2000/53/EC'. CARTONS WITHOUT THIS LABEL MAY CONTAIN PRODUCT WITH TIN/LEAD PLATING.



- NOTES:
- CRIMP ACCEPTS 18 TO 24 GA. WIRE WITH (2.79)/.110 MAX. INSUL. DIA; WHEN USED WITH 2574 CONNECTOR; (2.54)/.100 MAX. INSUL. DIA. WHEN USED WITH 2139 CONNECTOR; HOUSING 41695 IS RECOMMENDED FOR OVER (2.54)/.100 DIA. INSULATION. CRIMP ACCEPTS (3.00)/.118 MAX. INSUL. DIA. WITH SPECIAL TOOLING.
  - DIMENSIONS GIVEN ACROSS CENTERLINES ARE SYMMETRICAL ABOUT THOSE CENTERLINES WITHIN HALF THE TOTAL TOLERANCE.
  - 
  - 
  - 
  - (.86±.05)/.034±.002 IS AN OPTIONAL DESIGN.
  - THIS PART CONFORMS TO PRODUCT SPEC. 08-50.
  - CONDUCTOR CRIMP FOR 16 AWG. WIRE WITH .110 MAX. INSULATION DIA.

CHANGE TO MEMO E.C. NO. IEP-2005-4602 W CHRYSSAMIEC 2006/01/16 APPROVAL NO. 2006/01/16	QUALITY SYMBOLS	GENERAL TOLERANCES (UNLESS SPECIFIED)	DIMENSION STYLE	SCALE	DESIGN UNITS	THIRD ANGLE PROJECTION
	▽=0	4 PLACES ±--- INCH	IN/MM		INCH	
	▽=0	3 PLACES ±--- ±.010		DRAWN BY DATE	FILE	
	▽=0	2 PLACES ±.025 ±.014		CHECKED BY DATE		
		1 PLACE ±0.36 ±---		APPROVED BY DATE		
		ANGULAR ±1/2°				
		DRAFT WHERE APPLICABLE MUST REMAIN WITHIN DIMENSIONS	SEE CHART	MATERIAL NO.	DOCUMENT NO.	SHEET NO.
						1 OF 2

2478-1-(***)*		2478-3-(***)*		2478-IC-(***)*		2478-3C-(***)*		2478-ID-(***)*		2478-3E-(***)*	
PART NO.	ENG. NO.	PART NO.	ENG. NO.	PART NO.	ENG. NO.	PART NO.	ENG. NO.	PART NO.	ENG. NO.	PART NO.	ENG. NO.
08-50-0105	2478-1-(P909)	08-52-0071	2478-3-(P909)	08-50-0014	2478-IC-(P909)	08-52-0044	2478-3C-(P909)	08-50-0055	2478-ID-(P909)	2478-3E-(P909)	
08-50-0106	2478-1-(P909)	08-52-0072	2478-3-(P909)	08-50-0045	2478-IC-(P909)	08-52-0045	2478-3C-(P909)	08-50-0056	2478-ID-(P909)	2478-3E-(P909)	
08-50-0105	2478-1-(550)	08-55-0114	2478-3-(555)	08-50-0047	2478-IC-(P102)	08-52-0023	2478-3C-(102)			2478-3E-(555)	
08-50-0106	2478-1-(550)	08-55-0115	2478-3-(555)	08-50-0046	2478-IC-(P102)	08-52-0024	2478-3C-(102)			2478-3E-(550)	
08-55-0103	2478-1-(555)	08-52-0073	2478-3-(P102)	08-50-0091	2478-IC-(102)	08-52-0027	2478-3C-(122)			2478-3E-(550)	
08-55-0104	2478-1-(555)	08-52-0074	2478-3-(P102)	08-50-0093	2478-IC-(102)						
08-50-0146	2478-1-(109)	08-52-0811	2478-3-(102)			08-52-0047	2478-3C-(P102)				
08-50-0147	2478-1-(109)	08-52-0912	2478-3-(102)			08-52-0046	2478-3C-(P102)				
08-50-0119	2478-1-(122)	08-50-0281	2478-3-(122)								
08-50-0120	2478-1-(122)	08-50-0121	2478-3-(122)								
08-50-0271	2478-1-(P909)	08-50-0122	2478-3-(550)								
	2478-1-(550)	08-58-0122	2478-3-(550)								
08-56-0153	2478-1-(507)	08-58-0103	2478-3-(59)								
08-56-0154	2478-1-(507)	08-58-0104	2478-3-(59)								
	2478-1-(506)	08-58-0114	2478-3-(558)								
	2478-1-(506)	08-58-0115	2478-3-(558)								
08-50-0015	2478-1-(102)										
08-50-0016	2478-1-(102)										
08-52-0114	2478-1-(P909)										
08-52-0115	2478-1-(P909)										
	2478-1-(132)										
08-50-0001	2478-1-(132)										
08-50-0006	2478-1-(P224)										
08-50-0063	2478-1-(224)										
08-50-0064	2478-1-(224)										
08-55-0133	2478-1-(56)										
08-55-0134	2478-1-(56)										
08-50-0073	2478-1-(P102)										
08-50-0074	2478-1-(P102)										

SEE SHEET I SEE SHEET I  
 SEE SHEET I SEE SHEET I  
 SEE SHEET I SEE SHEET I  
 SEE SHEET I SEE SHEET I  
 SEE SHEET I SEE SHEET I  
 SEE SHEET I SEE SHEET I  
 SEE SHEET I SEE SHEET I  
 SEE SHEET I SEE SHEET I  
 SEE SHEET I SEE SHEET I  
 LTR. REVISIONS LTR. REVISIONS

0 0 0 0 REVISION ONLY ON CAD SYSTEM

CRIMP TERMINAL  
 #56 6  
 #24 AWG WIRE  
 MOLEX INCORPORATED  
 MOLEX 2 06/12/86  
 SD-2478

SEE CHARTS