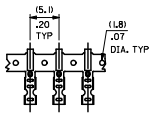
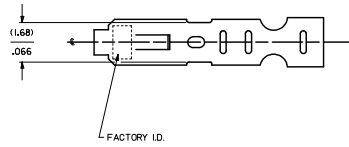
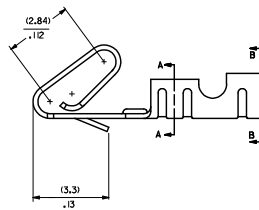
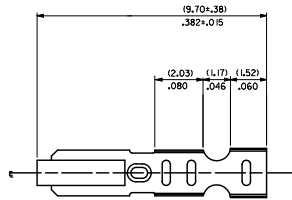
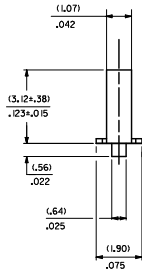
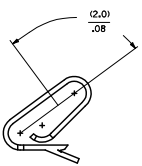


20 19 18 17 16 15 14 13 12 11 10 9 8 7 6 5 4 3 2 1

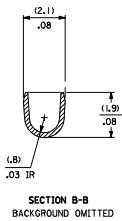
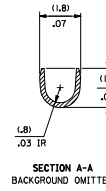
CARRIER VIEW



SELECT GOLD LOCATION

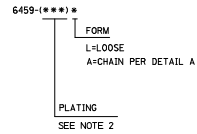


- NOTES:
 1. MATERIAL:
 (0.203±0.010)/.0080±.0004 THICK PHOS BRONZE
 2. FINISH:
 122 - OVERALL TIN (0.00381/0.00150 MIN. TIN OVER 0.00076/0.00030 MIN. NICKEL
 224 - OVERALL TIN (0.00508/0.00200 MIN. TIN OVER 0.00127/0.00050 MIN. NICKEL
 231 - SELECT GOLD (0.00076/0.00030 MIN. SELECT TIN (0.00254/0.00100 MIN. OVERALL NICKEL UNDERPLATE (0.00127/0.00050 MIN. OVERALL GOLD FLASH (0.0005/0.00002 MIN. #P909 - OVERALL HOT TIN DIP (0.00254/0.00100 MIN. 550 - SELECT GOLD (0.00381/0.00015 MIN. OVERALL NICKEL UNDERPLATE (0.00076/0.00030 MIN. OVERALL NICKEL UNDERPLATE (0.00076/0.00030 MIN. 555 - SELECT GOLD (0.00038/0.00015 MIN. OVERALL NICKEL UNDERPLATE (0.00076/0.00030 MIN. 558 - SELECT GOLD (0.00076/0.00030 MIN. OVERALL GOLD FLASH (0.0005/0.00002 MIN. OVERALL NICKEL UNDERPLATE (0.00127/0.00050 MIN. 561 - SELECT GOLD (0.00076/0.00030 MIN. OVERALL NICKEL UNDERPLATE (0.00127/0.00050
 *THE PRIMARY SHIPPING CARTON WILL BE LABELED "COMPLIANT TO R&HS DIRECTIVE 2002/95/EC AND ELV ANNEX II OF DIRECTIVE 2000/53/EC."
 CARTONS WITHOUT THIS LABEL MAY CONTAIN PRODUCT WITH TIN-LEAD PLATING.
 3. PRODUCT SPEC: PS-107
 4. PACKAGING SPECIFICATION: NONE
 5. CRIMP IS FOR 22-30 GA WIRE WITH 157/102 DIA INSULATION MAX.
 6. INSERTION FORCE OF TERMINAL INTO 1254/100 CENTERLINE CONNECTOR IS 2.5 LBS. MAX
 7. TERMINALS WILL RETAIN 8 LBS PULL FOR 1 MIN. IN A 1254/100 CENTERLINE HOUSING.
 8. DIMENSIONS GIVEN ACROSS CENTERLINES ARE SYMMETRICAL ABOUT THOSE CENTERLINES WITH HALF THE TOTAL TOLERANCE.
 9. THIS PART CONFORMS TO CLASS B REQUIREMENTS OF COSMETIC SPECIFICATION PS-45499-002



SECTION A-A
BACKGROUND OMITTED

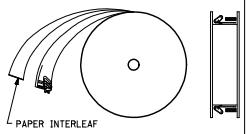
SECTION B-B
BACKGROUND OMITTED



SECTION A-A
BACKGROUND OMITTED

SECTION B-B
BACKGROUND OMITTED

WINDING DETAIL A



CORRECT MATERIAL ENCL. 1005-1057 D. CRIMM/PPFR 2008/09/18 CHKOSS/SEK 2008/09/19 APPROVAL TH. 2008/09/19 REV.	QUALITY SYMBOLS ▽=0 ▽=0	GENERAL TOLERANCES (UNLESS SPECIFIED) <table border="1"> <thead> <tr> <th></th> <th>MIN</th> <th>INCH</th> </tr> </thead> <tbody> <tr> <td>4 PLACES ±---</td> <td>±---</td> <td>±---</td> </tr> <tr> <td>3 PLACES ±---</td> <td>±.005</td> <td></td> </tr> <tr> <td>2 PLACES ±.013</td> <td>±.010</td> <td></td> </tr> <tr> <td>1 PLACE ±0.25</td> <td>±---</td> <td></td> </tr> </tbody> </table>		MIN	INCH	4 PLACES ±---	±---	±---	3 PLACES ±---	±.005		2 PLACES ±.013	±.010		1 PLACE ±0.25	±---		DIMENSION STYLE IN/MM DRAWN BY DATE SAMIEC 01/21/92 CHECKED BY DATE PATEL 01/21/92 APPROVED BY DATE LENZ 01/21/92	SCALE --- DESIGN UNITS INCH THIRD ANGLE PROJECTION
		MIN	INCH																
	4 PLACES ±---	±---	±---																
	3 PLACES ±---	±.005																	
2 PLACES ±.013	±.010																		
1 PLACE ±0.25	±---																		
DRAFT WHERE APPLICABLE MUST REMAIN WITHIN DIMENSIONS	SEE CHART	PATENT NO. DOCUMENT NO.	TITLE CRIMP TERMINAL 22-30 GA WIRE SAME AS 2759 EXCEPT MATL	SHEET NO. 1 OF 2															
MOLEX INCORPORATED AND SHOULD NOT BE USED WITHOUT WRITTEN PERMISSION	MOLEX INCORPORATED	SD-6459	MOLEX INCORPORATED	MOLEX INCORPORATED															
THIS DRAWING CONTAINS INFORMATION THAT IS PROPRIETARY TO MOLEX INCORPORATED AND SHOULD NOT BE USED WITHOUT WRITTEN PERMISSION	THIS DRAWING CONTAINS INFORMATION THAT IS PROPRIETARY TO MOLEX INCORPORATED AND SHOULD NOT BE USED WITHOUT WRITTEN PERMISSION	THIS DRAWING CONTAINS INFORMATION THAT IS PROPRIETARY TO MOLEX INCORPORATED AND SHOULD NOT BE USED WITHOUT WRITTEN PERMISSION	THIS DRAWING CONTAINS INFORMATION THAT IS PROPRIETARY TO MOLEX INCORPORATED AND SHOULD NOT BE USED WITHOUT WRITTEN PERMISSION	THIS DRAWING CONTAINS INFORMATION THAT IS PROPRIETARY TO MOLEX INCORPORATED AND SHOULD NOT BE USED WITHOUT WRITTEN PERMISSION															

6459-(***)*		PART NO.		ENG. NO.		PART NO.		ENG. NO.		PART NO.		ENG. NO.		PART NO.		ENG. NO.	
08-52-0101	*	6459-(P909)															
08-52-0123	*	6459-(P909)IL															
08-65-0801		6459-(561)															
		6459-(561)IL															
08-52-0118		6459-(224)															
		6459-(224)IL															
08-52-0121		6459-(122)															
		6459-(122)IL															
08-52-0122		6459-(122)IL															
08-65-0811	*	6459-(658)															
		6459-(658)IL															
08-65-0812	*	6459-(558)															
		6459-(558)IL															
08-65-0815	*	6459-(550)															
		6459-(550)IL															
08-65-0816	*	6459-(550)															
		6459-(550)IL															
08-65-0813	*	6459-(550)															
		6459-(550)IL															
08-65-0814	*	6459-(550)															
		6459-(550)IL															
08-65-0817	*	6459-(231)															
		6459-(231)IL															
08-65-0818		6459-(231)IL															

REMOVE 6459 (999) E.C. NO. 12/2006-2008 DRAWN BY: 2008/01/17 CHECKED BY: 2008/01/18 APPROVED BY: 2008/01/21 APPR. SIGN: 2008/01/21	QUALITY SYMBOLS	GENERAL TOLERANCES (UNLESS SPECIFIED)	DIMENSION STYLE	SCALE	DESIGN UNITS	THIRD ANGLE PROJECTION																																	
	▽=0 ▽=0	<table border="1"> <thead> <tr> <th></th> <th>MM</th> <th>INCH</th> </tr> </thead> <tbody> <tr> <td>4 PLACES ±---</td> <td>±---</td> <td>±---</td> </tr> <tr> <td>3 PLACES ±---</td> <td>±.005</td> <td>±---</td> </tr> <tr> <td>2 PLACES ±0.13</td> <td>±.010</td> <td>±---</td> </tr> <tr> <td>1 PLACE ±0.25</td> <td>±---</td> <td>±---</td> </tr> </tbody> </table>		MM	INCH	4 PLACES ±---	±---	±---	3 PLACES ±---	±.005	±---	2 PLACES ±0.13	±.010	±---	1 PLACE ±0.25	±---	±---	<table border="1"> <thead> <tr> <th>DRAWN BY</th> <th>DATE</th> <th>TITLE</th> </tr> </thead> <tbody> <tr> <td>SAMIEC</td> <td>01/21/92</td> <td>CRIMP TERMINAL</td> </tr> <tr> <td>CHECKED BY</td> <td>DATE</td> <td>22-30 GA WIRE</td> </tr> <tr> <td>PATEL</td> <td>01/21/92</td> <td>SAME AS 2759 EXCEPT MATL</td> </tr> <tr> <td>APPROVED BY</td> <td>DATE</td> <td>MOLEX MOLEX INCORPORATED</td> </tr> <tr> <td>LENZ</td> <td>01/21/92</td> <td></td> </tr> </tbody> </table>	DRAWN BY	DATE	TITLE	SAMIEC	01/21/92	CRIMP TERMINAL	CHECKED BY	DATE	22-30 GA WIRE	PATEL	01/21/92	SAME AS 2759 EXCEPT MATL	APPROVED BY	DATE	MOLEX MOLEX INCORPORATED	LENZ	01/21/92		---	INCH	<input checked="" type="checkbox"/> THIRD ANGLE PROJECTION
		MM	INCH																																				
	4 PLACES ±---	±---	±---																																				
3 PLACES ±---	±.005	±---																																					
2 PLACES ±0.13	±.010	±---																																					
1 PLACE ±0.25	±---	±---																																					
DRAWN BY	DATE	TITLE																																					
SAMIEC	01/21/92	CRIMP TERMINAL																																					
CHECKED BY	DATE	22-30 GA WIRE																																					
PATEL	01/21/92	SAME AS 2759 EXCEPT MATL																																					
APPROVED BY	DATE	MOLEX MOLEX INCORPORATED																																					
LENZ	01/21/92																																						
DRAFT WHERE APPLICABLE MUST REMAIN WITHIN DIMENSIONS	MATERIAL NO. SEE CHART	DOCUMENT NO. SD-6459	SHEET NO. 2 OF 2	THIS DRAWING CONTAINS INFORMATION THAT IS PROPRIETARY TO MOLEX INCORPORATED AND SHOULD NOT BE USED WITHOUT WRITTEN PERMISSION																																			