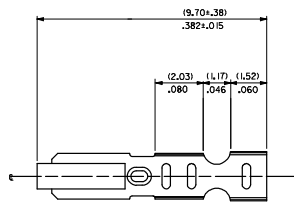
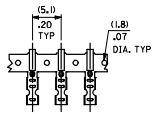


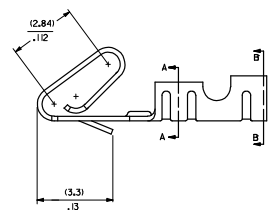
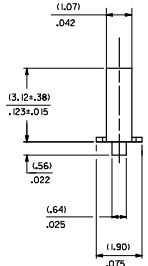
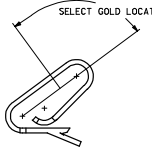
20 19 18 17 16 15 14 13 12 11 10 9 8 7 6 5 4 3 2 1

CARRIER VIEW

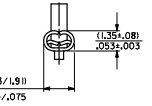


- NOTES
1. MATERIAL
10.2030G.0101/0080+.0004 THICK BRASS
 2. FINISH
102 - OVERALL TIN: (0.00508)/000200 MIN. TIN OVER
(0.00254)/000100 MIN. COPPER
122 - OVERALL TIN: (0.00381)/000150 MIN. TIN OVER
(0.00076)/000030 MIN. NICKEL
 3. FINISH
#P909 - OVERALL HOT TIN DP: (0.00254)/000100 MIN.
550 - SELECT GOLD: (0.00038)/000015 MIN.
OVERALL GOLD FLASH: (0.00005)/000002 MIN.
OVERALL NICKEL UNDERPLATE: (0.00076)/000030 MIN.
555 - SELECT GOLD: (0.00038)/000015 MIN.
OVERALL NICKEL UNDERPLATE: (0.00076)/000030 MIN.
558 - SELECT GOLD: (0.00076)/000030 MIN.
OVERALL GOLD FLASH: (0.00005)/000002 MIN.
OVERALL NICKEL UNDERPLATE: (0.00127)/000050 MIN.
*THE PRIMARY SHIPPING CARTON WILL BE LABELED "COMPLIANT TO RoHS DIRECTIVE 2002/95/EC AND ELV ANNEX I OF DIRECTIVE 2000/53/EC."
CARTONS WITHOUT THIS LABEL MAY CONTAIN PRODUCT WITH TIN-LEAD PLATING.
 3. PRODUCT SPEC: PS-0-07
 4. PACKAGING SPECIFICATION: NONE
 5. CRIMP IS FOR 22-30 GA WIRE WITH (157)/.062 DIA INSULATION MAX.
 6. INSERTION FORCE OF TERMINAL INTO (2.54)/.100 CENTERLINE CONNECTOR IS 2.5 LBS. MAX
 7. TERMINALS WILL RETAIN 8 LBS. PULL FOR 1 MIN. IN A (2.54)/.100 CENTERLINE HOUSING.
 8. DIMENSIONS GIVEN ACROSS CENTERLINES ARE SYMMETRICAL ABOUT THOSE CENTERLINES WITHIN HALF THE TOTAL TOLERANCE.
 9. CODE LETTER PRECEDING PART NO. DESIGNATES MANUFACTURING LOCATION: IRELAND
 10. THIS PART CONFORMS TO CLASS B REQUIREMENTS OF COSMETIC SPECIFICATION PS-45499-002.

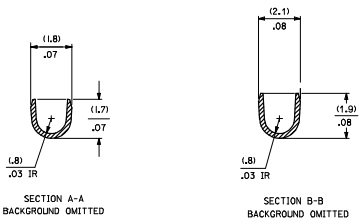
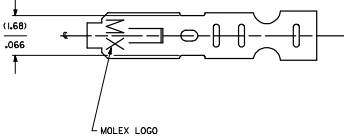
SELECT GOLD LOCATION



CRIMP DETAIL



CRIMPED TERMINAL 2759-IP90 IRLC IS USED WITHOUT WIRE AND IS INSERTED INTO HEADERS DURING SHIPMENT.



- 2759-*****)
- FORM
 - L=LOOSE
 - C=LOOSE CRIMPED
 - A=CHAIN PER ES-339-A
 - B=CHAIN PER ES-339-B
- PLATING
SEE NOTE 2

QUALITY SYMBOLS ▽=0 ▽=0	GENERAL TOLERANCES (UNLESS SPECIFIED) 4 PLACES ± .010 3 PLACES ± .010 2 PLACES ± 0.25 1 PLACE ± 0.36 ANGULAR ± 1/2°		DIMENSION STYLE MM/IN		SCALE ---		DESIGN UNITS INCH		THIRD ANGLE PROJECTION	
	DRAWN BY: SAMIEC DATE: 07/28/87		CHECKED BY: PATEL DATE: 07/28/87		APPROVED BY: LENZ DATE: 07/28/87		TITLE CRIMP TERMINAL 22-30 GA WIRE		MOLEX INCORPORATED	
MATERIAL NO. SEE CHART DRAFT WHERE APPLICABLE MUST REMAIN WITHIN DIMENSIONS		DOCUMENT NO. SD-2759		SHEET NO. 1 OF 2		THIS DRAWING CONTAINS INFORMATION THAT IS PROPRIETARY TO MOLEX INCORPORATED AND SHOULD NOT BE USED WITHOUT WRITTEN PERMISSION				

2759-(***)*		2759-(***)*		2759-(***)*		2759-(***)*		2759-(***)*	
PART NO.	ENG. NO.	PART NO.	ENG. NO.	PART NO.	ENG. NO.	PART NO.	ENG. NO.	PART NO.	ENG. NO.
08-55-0101	2759-1555JB								
08-55-0102	2759-1555JL								
08-55-0126	2759-1555JA								
08-56-0109	2759-1550JB								
08-56-0110	2759-1550JL								
08-50-0113	2759-1P909JB								
08-50-0114	2759-1P909JL								
08-50-0124	2759-1P909JC								
08-51-0108	2759-1122JB								
	2759-1122JL								
I 08-50-0274	2759-1P909JB								
I 08-50-0275	2759-1P909JL								
I 08-50-0273	2759-1P909JA								
08-55-0130	2759-1558JB								
08-55-0131	2759-1558JL								
08-50-0160	2759-1102JL								
08-50-0159	2759-1102JL								

REMOVE *999 PARTS ELEC. NO. LCP2008-0222 2007/08/02 2007/08/02 2007/08/02 2007/08/02 4-CHRO-BELL LCP2008-0222 LCP2008-0222 LCP2008-0222 LCP2008-0222	QUALITY SYMBOLS 	GENERAL TOLERANCES (UNLESS SPECIFIED)		DIMENSION STYLE		SCALE	DESIGN UNITS	THIRD ANGLE PROJECTION
		mm	INCH	MM/IN		---	---	
		4 PLACES ± --- ± ---	3 PLACES ± --- ± ---	DRAWN BY	DATE	TITLE		
		2 PLACES ± --- ± ---	1 PLACE ± --- ± ---	SAM HEC	07/28/87	CRIMP TERMINAL		
ANGULAR ±1/2°		CHECKED BY	DATE	MOLEX INCORPORATED				
DRAFT WHERE APPLICABLE MUST REMAIN WITHIN DIMENSIONS		APPROVED BY	DATE	SEE CHART		DOCUMENT NO.	SHEET NO.	
		LENZ	07/28/87	SD-2759		2 OF 2		
		THIS DRAWING CONTAINS INFORMATION THAT IS PROPRIETARY TO MOLEX INCORPORATED AND SHOULD NOT BE USED WITHOUT WRITTEN PERMISSION						