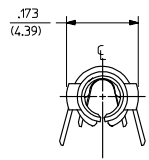
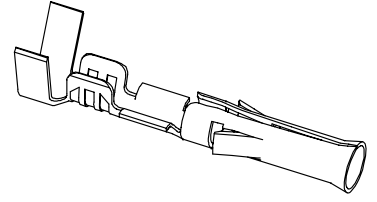
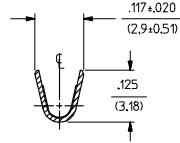
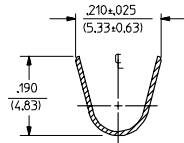
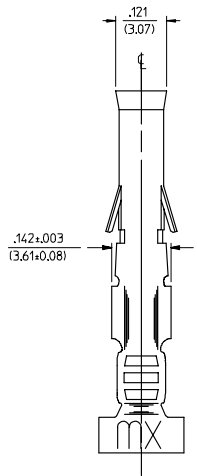
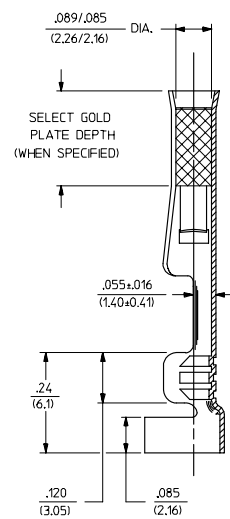
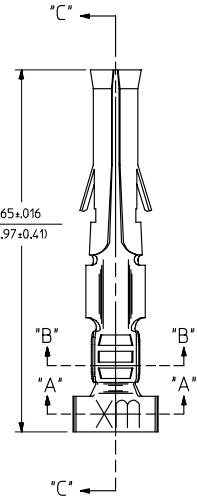


PART NO.	ENG. NO.
02-09-1104	1189-AIP901IL
02-09-1102	1189-AIP901
02-09-5111	1189-AIP591IL
02-09-5102	1189-AIP591
02-09-5106	1189-AIP550IL
02-09-5100	1189-AIP550

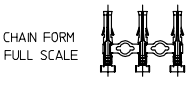


**LEGEND**

1189-A(\*\*\*\*)\*  
 \*FORM BLANK=CHAIN  
 \*L=LOOSE  
 P=PREPLATE BLANK=POSTPLATE  
 \*FINISH CODE



SECT. "C-C"



- NOTES:
- MATERIAL: CARTRIDGE BRASS, ALLOY #C26000, .010/(0.25) THICK
  - FINISH CODES:
    - 901 HOT TIN DP .000020/(0.00051) MN.
    - 591 SELECT GOLD PLATE .000050/(0.00127) MN. IN CONTACT AREA, OVER .000050/(0.00127) MN. NICKEL OVERALL WITH .000010/(0.00025) MAX. GOLD FLASH OVERALL.
    - 550 SELECT GOLD PLATE .000015/(0.00038) MN. IN CONTACT AREA, OVER .000030/(0.00076) MN. NICKEL OVERALL WITH .000010/(0.00025) MAX. GOLD FLASH OVERALL.
  - \*THE PRIMARY SHIPPING CARTON WILL BE LABELED, "COMPLIANT TO RoHS DIRECTIVE 2002/95/EC AND ELV ANNEX OF DIRECTIVE 2000/53/EC", AND CARTONS WITHOUT THIS LABEL MAY CONTAIN PRODUCT WITH TIN-LEAD.
  - THIS PART CONFORMS TO PROD. SPEC. 02-09.
  - PACKAGING INFORMATION: NOT AVAILABLE
  - TERMINAL FOR USE WITH .093/(2.36) SERIES HOUSINGS AND WILL ACCEPT 14 THRU 20 AWG WIRE.
  - INSERTION FORCE: 3.5 LBS. MAX. WHEN TERMINAL IS INSERTED INTO AN .093 SERIES HOUSING.
  - RETENTION: 20 LBS. MIN. FROM HOUSING.

ADDED PARTS EC NO. UCP2006-1061 DRAWN BY PETERSON 2005/11/18 CHECKED BY SMITH 2005/11/29 APPROVED BY SMITH 2005/12/02	QUALITY SYMBOLS ▽=0 ▽=0	GENERAL TOLERANCES (UNLESS SPECIFIED)		DIMENSION STYLE IN/MM		SCALE 6:1	DESIGN UNITS INCH	THIRD ANGLE PROJECTION
		4 PLACES ± --- ± ---	3 PLACES ± --- ± .010	2 PLACES ± 0.25 ± .014	1 PLACE ± 0.35 ± ---	ANGULAR ±1/2°	DRAWN BY SEP DATE 1987/10/26	CHECKED BY RW DATE 1987/10/26
DRAFT WHERE APPLICABLE MUST REMAIN WITHIN DIMENSIONS		SEE CHART		MATERIAL NO. SD-1189-*		DOCUMENT NO. SD-1189-*		SHEET NO. 1 OF 1
THIS DRAWING CONTAINS INFORMATION THAT IS PROPRIETARY TO MOLEX INCORPORATED AND SHOULD NOT BE USED WITHOUT WRITTEN PERMISSION								