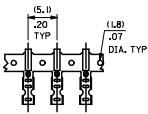
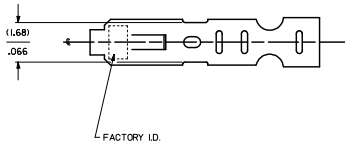
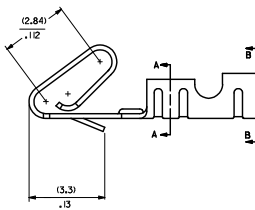
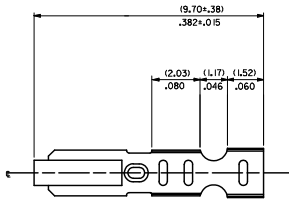
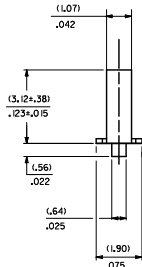
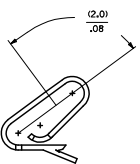


20 19 18 17 16 15 14 13 12 11 10 9 8 7 6 5 4 3 2 1

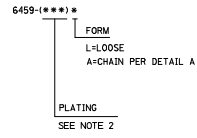
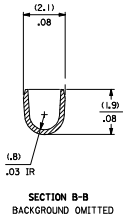
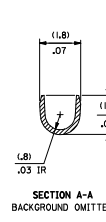
CARRIER VIEW



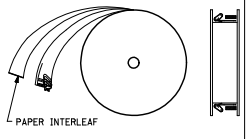
SELECT GOLD LOCATION



- NOTES:
 1. MATERIAL:
 (0.203±0.010)/.0080±.0004 THICK PHOS BRONZE
 2. FINISH:
 122 - OVERALL TIN (0.00381/0.00150 MIN. TIN OVER 0.00076/0.00030 MIN. NICKEL)
 224 - OVERALL TIN (0.00508/0.00200 MIN. TIN OVER 0.00127/0.00050 MIN. NICKEL)
 231 - SELECT GOLD (0.00076/0.00030 MIN. SELECT TIN (0.00254/0.00100 MIN. OVERALL NICKEL UNDERPLATE (0.00127/0.00050 MIN. OVERALL GOLD FLASH (0.0005/0.00002 MIN. OVERALL HOT TIN DIP (0.00254/0.00100 MIN. 550 - SELECT GOLD (0.00381/0.00015 MIN. OVERALL NICKEL UNDERPLATE (0.00076/0.00030 MIN. OVERALL NICKEL UNDERPLATE (0.00076/0.00030 MIN. 555 - SELECT GOLD (0.00038/0.00015 MIN. OVERALL NICKEL UNDERPLATE (0.00076/0.00030 MIN. 558 - SELECT GOLD (0.00076/0.00030 MIN. OVERALL GOLD FLASH (0.0005/0.00002 MIN. OVERALL NICKEL UNDERPLATE (0.00127/0.00050 MIN. 561 - SELECT GOLD (0.00076/0.00030 MIN. OVERALL NICKEL UNDERPLATE (0.00127/0.00050
 *THE PRIMARY SHIPPING CARTON WILL BE LABELED "COMPLIANT TO R&HS DIRECTIVE 2002/95/EC AND ELV ANNEX II OF DIRECTIVE 2000/53/EC."
 CARTONS WITHOUT THIS LABEL MAY CONTAIN PRODUCT WITH TIN-LEAD PLATING.
 3. PRODUCT SPEC: PS-107
 4. PACKAGING SPECIFICATION: NONE
 5. CRIMP IS FOR 22-30 GA WIRE WITH 157/102 DIA INSULATION MAX.
 6. INSERTION FORCE OF TERMINAL INTO 1254/100 CENTERLINE CONNECTOR IS 2.5 LBS. MAX.
 7. TERMINALS WILL RETAIN 8 LBS PULL FOR 1 MIN. IN A 1254/100 CENTERLINE HOUSING.
 8. DIMENSIONS GIVEN ACROSS CENTERLINES ARE SYMMETRICAL ABOUT THOSE CENTERLINES WITH HALF THE TOTAL TOLERANCE.
 9. THIS PART CONFORMS TO CLASS B REQUIREMENTS OF COSMETIC SPECIFICATION PS-45499-002



WINDING DETAIL A



CORRECT MATERIAL ENCL. 1003-4559 D CRIMINAL/PPER 2008/09/18 CHKOSSO/SEK 2008/09/19 APPROF/STH 2008/09/19 REV	QUALITY SYMBOLS ▽=0 ▽=0	GENERAL TOLERANCES (UNLESS SPECIFIED) <table border="1"> <thead> <tr> <th></th> <th>MIN</th> <th>INCH</th> </tr> </thead> <tbody> <tr> <td>4 PLACES ±---</td> <td>±---</td> <td>±---</td> </tr> <tr> <td>3 PLACES ±---</td> <td>±.005</td> <td></td> </tr> <tr> <td>2 PLACES ±.013</td> <td>±.010</td> <td></td> </tr> <tr> <td>1 PLACE ±0.25</td> <td>±---</td> <td></td> </tr> </tbody> </table> ANGLUAR ±1/2°		MIN	INCH	4 PLACES ±---	±---	±---	3 PLACES ±---	±.005		2 PLACES ±.013	±.010		1 PLACE ±0.25	±---		DIMENSION STYLE IN/MM DRAWN BY DATE SAMIEC 01/21/92 CHECKED BY DATE PATEL 01/21/92 APPROVED BY DATE LENZ 01/21/92	SCALE --- DESIGN UNITS INCH THIRD ANGLE PROJECTION	TITLE CRIMP TERMINAL 22-30 GA WIRE SAME AS 2759 EXCEPT MATL	PATENT NO. SEE CHART DOCUMENT NO. SD-6459	SHEET NO. 1 OF 2
		MIN	INCH																			
	4 PLACES ±---	±---	±---																			
	3 PLACES ±---	±.005																				
2 PLACES ±.013	±.010																					
1 PLACE ±0.25	±---																					
DRAFT WHERE APPLICABLE MUST REMAIN WITHIN DIMENSIONS																						
THIS DRAWING CONTAINS INFORMATION THAT IS PROPRIETARY TO MOLEX INCORPORATED AND SHOULD NOT BE USED WITHOUT WRITTEN PERMISSION																						
MOLEX INCORPORATED																						

10-frame_D.P.M.E.T
 Rev. E 2006/04/15

6459-(***)*		PART NO.		ENG. NO.		PART NO.		ENG. NO.		PART NO.		ENG. NO.		PART NO.		ENG. NO.	
08-52-0101	*	6459-(P909)															
08-52-0123	*	6459-(P909)IL															
08-65-0801		6459-(561)															
		6459-(561)IL															
08-52-0118		6459-(224)															
		6459-(224)IL															
08-52-0121		6459-(122)															
		6459-(122)IL															
08-52-0122		6459-(122)IL															
08-65-0811	*	6459-(658)															
		6459-(658)IL															
08-65-0812	*	6459-(558)															
		6459-(558)IL															
08-65-0815	*	6459-(550)															
		6459-(550)IL															
08-65-0816	*	6459-(550)															
		6459-(550)IL															
08-65-0813	*	6459-(550)															
		6459-(550)IL															
08-65-0814	*	6459-(550)															
		6459-(550)IL															
08-65-0817	*	6459-(231)															
		6459-(231)IL															
08-65-0818		6459-(231)IL															

REMOVE 6459 (999) EC NO. IEC 2006-2008 DRAWN BY: 2008/01/17 CHECKED BY: 2008/01/18 APPROVED BY: 2008/01/21 APPR: SMT 2008/01/21	QUALITY SYMBOLS	GENERAL TOLERANCES (UNLESS SPECIFIED)	DIMENSION STYLE	SCALE	DESIGN UNITS	THIRD ANGLE PROJECTION																																		
	$\nabla=0$ $\nabla=0$	<table border="1"> <thead> <tr> <th></th> <th>MM</th> <th>INCH</th> </tr> </thead> <tbody> <tr> <td>4 PLACES ±---</td> <td>±---</td> <td>±---</td> </tr> <tr> <td>3 PLACES ±---</td> <td>±.005</td> <td>±---</td> </tr> <tr> <td>2 PLACES ±0.13</td> <td>±.010</td> <td>±---</td> </tr> <tr> <td>1 PLACE ±0.25</td> <td>±---</td> <td>±---</td> </tr> </tbody> </table>		MM	INCH	4 PLACES ±---	±---	±---	3 PLACES ±---	±.005	±---	2 PLACES ±0.13	±.010	±---	1 PLACE ±0.25	±---	±---	<table border="1"> <thead> <tr> <th>DRAWN BY</th> <th>DATE</th> <th>TITLE</th> </tr> </thead> <tbody> <tr> <td>SAMIEC</td> <td>01/21/92</td> <td>CRIMP TERMINAL</td> </tr> <tr> <td>CHECKED BY</td> <td>DATE</td> <td>22-30 GA WIRE</td> </tr> <tr> <td>PATEL</td> <td>01/21/92</td> <td>SAME AS 2759 EXCEPT MATL</td> </tr> <tr> <td>APPROVED BY</td> <td>DATE</td> <td>MOLEX INCORPORATED</td> </tr> <tr> <td>LENZ</td> <td>01/21/92</td> <td></td> </tr> </tbody> </table>	DRAWN BY	DATE	TITLE	SAMIEC	01/21/92	CRIMP TERMINAL	CHECKED BY	DATE	22-30 GA WIRE	PATEL	01/21/92	SAME AS 2759 EXCEPT MATL	APPROVED BY	DATE	MOLEX INCORPORATED	LENZ	01/21/92		IN/MM	---	INCH	<input checked="" type="checkbox"/>
		MM	INCH																																					
	4 PLACES ±---	±---	±---																																					
3 PLACES ±---	±.005	±---																																						
2 PLACES ±0.13	±.010	±---																																						
1 PLACE ±0.25	±---	±---																																						
DRAWN BY	DATE	TITLE																																						
SAMIEC	01/21/92	CRIMP TERMINAL																																						
CHECKED BY	DATE	22-30 GA WIRE																																						
PATEL	01/21/92	SAME AS 2759 EXCEPT MATL																																						
APPROVED BY	DATE	MOLEX INCORPORATED																																						
LENZ	01/21/92																																							
DRAFT WHERE APPLICABLE MUST REMAIN WITHIN DIMENSIONS	MATERIAL NO. SEE CHART	DOCUMENT NO. SD-6459	SHEET NO. 2 OF 2	THIS DRAWING CONTAINS INFORMATION THAT IS PROPRIETARY TO MOLEX INCORPORATED AND SHOULD NOT BE USED WITHOUT WRITTEN PERMISSION																																				