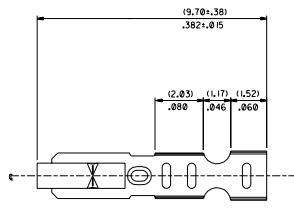
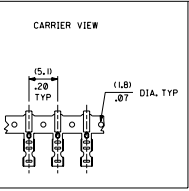
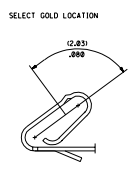
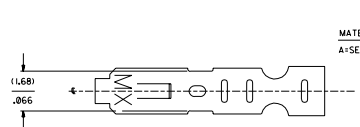
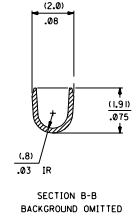
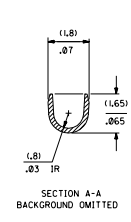
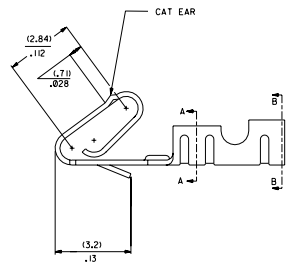
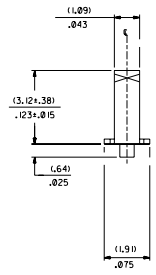


20 19 18 17 16 15 14 13 12 11 10 9 8 7 6 5 4 3 2 1



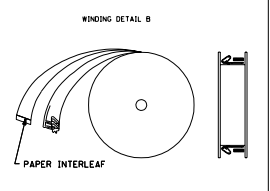
- NOTES:
1. CRIMP IS FOR 22-30 GA WIRE, WITH .062 DIA INSULATION MAX.
  2. INSERTION FORCE OF TERMINAL INTO .100 & CONNECTOR IS 2.5 LBS. MAX
  3. TERMINALS MUST RETAIN 8 LBS PULL FOR 1 MIN. IN KK .100 & HOUSING.
  4. PARTS CONFORM TO PS-10-07
  5. MATERIAL: .0080+.0004 THICK PHOS BRONZE ALLOY 510
  6. DIMENSIONS GIVEN ACROSS CENTERLINES ARE SYMMETRICAL ABOUT THOSE CENTERLINES WITHIN HALF THE TOTAL TOLERANCE.



41572-\*\*\*\*\*  
MATERIAL L1  
A:SEE NOTE 5 L:LOOSE  
FORM BLANK+CHAIN PER DETAIL A

PLATING  
PER SDES-88  
\*IP909) OVERALL HOT TIN DIP: .00254 MICROMETERS MIN  
(550) SELECT GOLD: .00038 MICROMETERS MIN.  
OVERALL GOLD FLASH: .00005 MICROMETERS MIN.  
OVERALL NICKEL UNDERPLATE: .00076 MICROMETERS MIN.  
(555) SELECT GOLD: .00038 MICROMETERS MIN.  
OVERALL NICKEL UNDERPLATE: .00076 MICROMETERS MIN.

\*THE PRIMARY SHIPPING CARTON WILL BE LABELED "COMPLIANT TO RoHS DIRECTIVE 2002/95/EC AND ELV ANNEX II OF DIRECTIVE 2000/53/EC. CARTONS WITHOUT THIS LABEL MAY CONTAIN PRODUCT WITH TIN-LEAD PLATING.



PART NO.	ENG NO.
08-65-0884	41572-AIP909)
08-65-0885	41572-AIP909)IL
	41572-AI555)
	41572-AI555)IL
	41572-AI550)
	41572-AI550)IL

REV.	DATE	BY	CHKD	APP'D	DESCRIPTION
0					CRIMP TERMINAL 22-30 GA WIRE SAME AS 6459 EXCEPT CAT EAR
1	3/19/93				MOLEX INCORPORATED
2					CHART SD-41572

20 19 18 17 16 15 14 13 12 11 10 9 8 7 6 5 4 3 2 1