

| ITEM NO. | FORM | WIRE GAGE | RANGE OF INSULATION DIA. | DIM. "A" | DIM. "B" | DIM. "C" | DIM. "D" | DIM. "E" | DIM. "F" |
|------------|-------|-----------|--------------------------|-------------------------|-------------------------|---------------|-------------------------|-------------------------|---------------|
| 44478-1111 | CHAIN | 18-20 GA. | .051-.122 (1.30-3.10) | .075±.012 (1.90±.30) | .091±.016 (2.30±.40) | .020 (.50) | .142±.012 (3.60±.30) | .177±.016 (4.50±.40) | .035 (.90) |
| 44478-1112 | LOOSE | | | .091±.012 (2.30±.30) | .106±.016 (2.70±.40) | .024 (.60) | .142±.012 (3.60±.30) | .177±.016 (4.50±.40) | .035 (.90) |
| 44478-3111 | CHAIN | 16 GA. | .122 (3.10) MAX. | .091±.012 (2.30±.30) | .106±.016 (2.70±.40) | .024 (.60) | .142±.012 (3.60±.30) | .177±.016 (4.50±.40) | .035 (.90) |
| 44478-3112 | LOOSE | | | .091±.012 (2.30±.30) | .106±.016 (2.70±.40) | .024 (.60) | .142±.012 (3.60±.30) | .177±.016 (4.50±.40) | .035 (.90) |
| 44478-1211 | CHAIN | 18-20 GA. | .051-.122 (1.30-3.10) | .075±.012 (1.90±.30) | .091±.016 (2.30±.40) | .020 (.50) | .142±.012 (3.60±.30) | .177±.016 (4.50±.40) | .035 (.90) |
| 44478-1212 | LOOSE | | | .091±.012 (2.30±.30) | .106±.016 (2.70±.40) | .024 (.60) | .142±.012 (3.60±.30) | .177±.016 (4.50±.40) | .035 (.90) |
| 44478-3211 | CHAIN | 16 GA. | .122 (3.10) MAX. | .091±.012 (2.30±.30) | .106±.016 (2.70±.40) | .024 (.60) | .142±.012 (3.60±.30) | .177±.016 (4.50±.40) | .035 (.90) |
| 44478-3212 | LOOSE | | | .091±.012 (2.30±.30) | .106±.016 (2.70±.40) | .024 (.60) | .142±.012 (3.60±.30) | .177±.016 (4.50±.40) | .035 (.90) |

LEGEND:

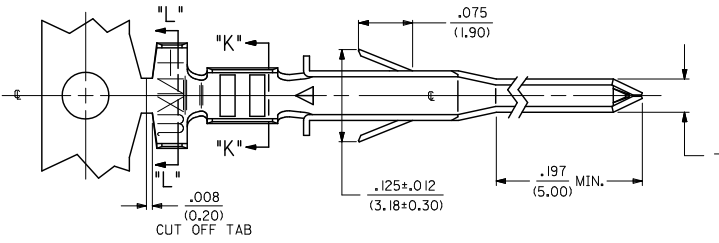
44478 - * 1 *

BASE NO. _____

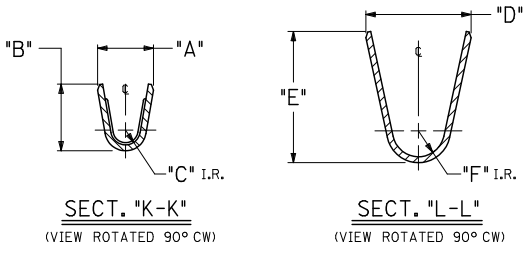
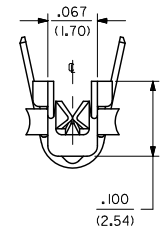
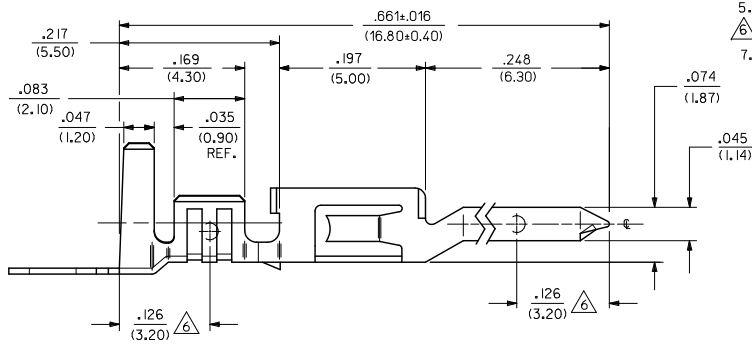
WIRE GAGE
1 = 18-20 AWG
3 = 16 AWG

CHAIN OR LOOSE
"1" = CHAIN
"2" = LOOSE

PLATING
SEE NOTE 2



- NOTES:**
- MATERIAL: COPPER ALLOY, .008/(0.20) THICK.
 - FINISH:
 - *1= PLATING: POSTPLATE .000100/(.00254) MIN. BRIGHT TIN OVER .000030/(.00076) MIN. NICKEL OVERALL.
 - *2= PLATING: POSTPLATE .000030/(.000076) MIN. SELECT GOLD AND .000100/(0.00254) MIN. MATTE TIN OVER .000050/(.00127) MIN. NICKEL OVERALL.
 - *THE PRIMARY SHIPPING CARTON WILL BE LABELED "COMPLIANT TO RoHS DIRECTIVE 2002/95/EC AND ELV ANNEX II OF DIRECTIVE 2000/53/EC." CARTONS WITHOUT THIS LABEL MAY CONTAIN PRODUCT WITH TIN-LEAD PLATING.
 - PRODUCT SPECIFICATION PS-44476-001.
 - PACKAGING SPECIFICATION: PK-44478-001 FOR CHAIN TERMINALS
PK-5556-003 FOR LOOSE TERMINALS
 - TERMINAL IS FOR USE WITH MOLEX PLUG HOUSINGS 5559, 30068 AND 42475.
 - MEASURING POINT FOR PLATING THICKNESS.
 - ITEM NUMBERS PRECEDED BY AN "X" IN THE CHART ARE NOT AVAILABLE.



| | | | | | | | | | |
|--|--------------------------------------|--|----|---------------------------------|--------------------|-------------------------------|--|---------------------------|--|
| MODIFIED NOTES EC NO. UCP200-0471 DRAWN: JAGUILAR 2009/12/23 CHKD: BELL 2009/12/23 APPROV: SMITH 2009/12/28 | QUALITY SYMBOLS ▽=0 ▽=0 | GENERAL TOLERANCES (UNLESS SPECIFIED) | | DIMENSION STYLE IN/MM | | SCALE 10:1 | DESIGN UNITS METRIC | THIRD ANGLE PROJECTION | |
| | | 4 PLACES ±.010 ±.010 | mm | INCH | DRAWN BY GEP | DATE 1994/07/25 | TITLE TERMINAL, MALE, CRIMP MINI-FIT JR HCS SERIES | | |
| | | 3 PLACES ±.025 ±.015 | | | CHECKED BY RJF | DATE 1994/07/25 | | | |
| | | 1 PLACE ±0.38 ±.015 | | | APPROVED BY RJF | DATE 1994/07/25 | | | |
| | | ANGULAR ±1/2° | | MATERIAL NO. SEE CHART | | DOCUMENT NO. SD-44478-**** | SHEET NO. 1 OF 1 | | |
| DRAFT WHERE APPLICABLE MUST REMAIN WITHIN DIMENSIONS | | THIS DRAWING CONTAINS INFORMATION THAT IS PROPRIETARY TO MOLEX INCORPORATED AND SHOULD NOT BE USED WITHOUT WRITTEN PERMISSION | | | | | | | |