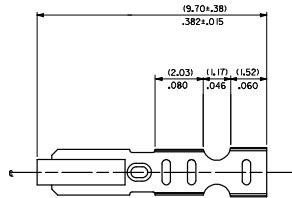
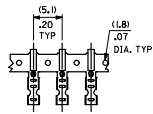


20 19 18 17 16 15 14 13 12 11 10 9 8 7 6 5 4 3 2 1

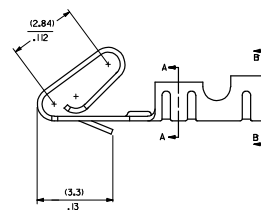
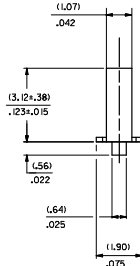
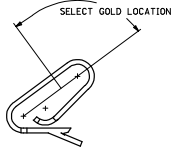
CARRIER VIEW



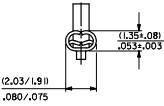
NOTES

1. MATERIAL
10.2030G.0101/0080+.0004 THICK BRASS
2. FINISH
102 - OVERALL TIN: (0.00508)/000200 MIN. TIN OVER
(0.00254)/000100 MIN. COPPER
122 - OVERALL TIN: (0.00381)/000150 MIN. TIN OVER
(0.00076)/000030 MIN. NICKEL
#P909 - OVERALL HOT TIN DP: (0.00254)/000100 MIN.
550 - SELECT GOLD: (0.00038)/000015 MIN.
OVERALL GOLD FLASH: (0.00059)/000002 MIN.
OVERALL NICKEL UNDERPLATE: (0.00076)/000030 MIN.
555 - SELECT GOLD: (0.00038)/000015 MIN.
OVERALL NICKEL UNDERPLATE: (0.00076)/000030 MIN.
558 - SELECT GOLD: (0.00076)/000030 MIN.
OVERALL GOLD FLASH: (0.00059)/000002 MIN.
OVERALL NICKEL UNDERPLATE: (0.00127)/000050 MIN.
*THE PRIMARY SHIPPING CARTON WILL BE LABELED "COMPLIANT TO RoHS
DIRECTIVE 2002/95/EC AND ELV ANNEX I OF DIRECTIVE 2000/53/EC."
CARTONS WITHOUT THIS LABEL MAY CONTAIN PRODUCT WITH TIN-LEAD PLATING.
3. PRODUCT SPEC: PS-0-07
4. PACKAGING SPECIFICATION: NONE
5. CRIMP IS FOR 22-30 GA WIRE WITH (157)/.062 DIA INSULATION MAX.
6. INSERTION FORCE OF TERMINAL INTO (2.54)/100 CENTERLINE CONNECTOR IS 2.5 LBS. MAX
7. TERMINALS WILL RETAIN 8 LBS PULL FOR 1 MIN. IN A (2.54)/100 CENTERLINE HOUSING.
8. DIMENSIONS GIVEN ACROSS CENTERLINES ARE SYMMETRICAL ABOUT THOSE CENTERLINES WITHIN HALF THE TOTAL TOLERANCE.
9. CODE LETTER PRECEDING PART NO. DESIGNATES MANUFACTURING LOCATION: IRELAND
10. THIS PART CONFORMS TO CLASS B REQUIREMENTS OF COSMETIC SPECIFICATION PS-45499-002.

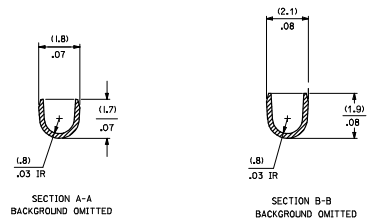
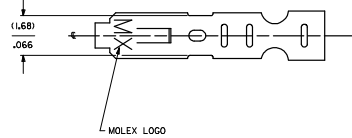
SELECT GOLD LOCATION



CRIMP DETAIL



CRIMPED TERMINAL 2759-IP90 ILC IS USED WITHOUT WIRE AND IS INSERTED INTO HEADERS DURING SHIPMENT.



- 2759-(****) *
FORM
L=LOOSE
C=LOOSE CRIMPED
A=CHAIN PER ES-339-A
B=CHAIN PER ES-339-B
PLATING
SEE NOTE 2

QUALITY SYMBOLS ▽=0 ▽=0	GENERAL TOLERANCES (UNLESS SPECIFIED) DIM INCH 4 PLACES ± .005 3 PLACES ± .010 2 PLACES ± .025 1 PLACE ± 0.36 ANGULAR ± 1/2°		DIMENSION STYLE MM/IN DRAWN BY: SAMIEC DATE: 07/28/87 CHECKED BY: PATEL DATE: 07/28/87 APPROVED BY: LENZ DATE: 07/28/87		SCALE: --- DESIGN UNITS: INCH THIRD ANGLE PROJECTION
	DRAFT WHERE APPLICABLE MUST REMAIN WITHIN DIMENSIONS		MATERIAL NO. SEE CHART DOCUMENT NO. SD-2759		MOLEX INCORPORATED SHEET NO. 1 OF 2

19 18 17 16 15 14 13 12 11 10 9 8 7 6 5 4 3 2 1

2759-(***)*									
PART NO.	ENG. NO.	PART NO.	ENG. NO.	PART NO.	ENG. NO.	PART NO.	ENG. NO.	PART NO.	ENG. NO.
08-55-0101	2759-1555JB								
08-55-0102	2759-1555JL								
08-55-0126	2759-1555JA								
08-56-0109	2759-1550JB								
08-56-0110	2759-1550JL								
08-50-0113	2759-1P909JB								
08-50-0114	2759-1P909JL								
08-50-0124	2759-1P909JC								
08-51-0108	2759-1122JB								
	2759-1122JL								
I 08-50-0274	2759-1P909JB								
I 08-50-0275	2759-1P909JL								
I 08-50-0273	2759-1P909JA								
08-55-0130	2759-1558JB								
08-55-0131	2759-1558JL								
08-50-0160	2759-1102JL								
08-50-0159	2759-1102JL								

REMOVE *999 PARTS ELEC. NO. LFCP2008-0222 2007/08/02 2007/08/02 4 CHROD BELL 2007/08/02 LFCP2008-0222 2007/08/02 AS4 NET	QUALITY SYMBOLS	GENERAL TOLERANCES (UNLESS SPECIFIED)	DIMENSION STYLE	SCALE	DESIGN UNITS	THIRD ANGLE PROJECTION
	▽=0 ▽=0	mm INCH	MM/IN	---	INCH	⊘
		4 PLACES ± --- ± ---	DRAWN BY DATE	TITLE		
		3 PLACES ± --- ± ---	SAM IEC 07/28/87	CRIMP TERMINAL		
		2 PLACES ± --- ± ---	CHECKED BY DATE	22-30 GA WIRE		
	1 PLACE ± --- ± ---	PATEL 07/28/87	APPROVED BY DATE	MOLEX INCORPORATED		
	ANGULAR ±1/2°	LENZ 07/28/87	MATERIAL NO.	DOCUMENT NO.	SHEET NO.	
	DRAFT WHERE APPLICABLE MUST REMAIN WITHIN DIMENSIONS	SEE CHART	SD-2759	2 OF 2		
		SIZE D	THIS DRAWING CONTAINS INFORMATION THAT IS PROPRIETARY TO MOLEX INCORPORATED AND SHOULD NOT BE USED WITHOUT WRITTEN PERMISSION			