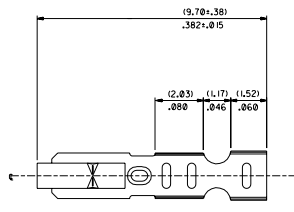
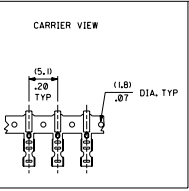
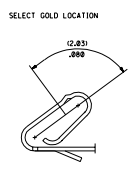
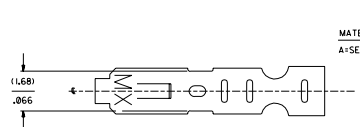
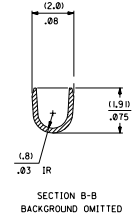
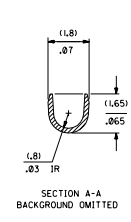
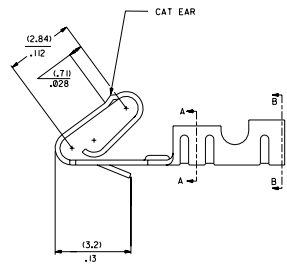
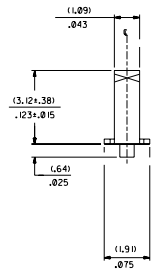


20 19 18 17 16 15 14 13 12 11 10 9 8 7 6 5 4 3 2 1



- NOTES:  
1. CRIMP IS FOR 22-30 GA WIRE, WITH .062 DIA INSULATION MAX.  
2. INSERTION FORCE OF TERMINAL INTO .100 L CONNECTOR IS 2.5 LBS. MAX  
3. TERMINALS MUST RETAIN 8 LBS PULL FOR 1 MIN. IN KK .100 L HOUSING.  
4. PARTS CONFORM TO PS-10-07  
5. MATERIAL: .0080+.0004 THICK PHOS BRONZE ALLOY 510  
6. DIMENSIONS GIVEN ACROSS CENTERLINES ARE SYMMETRICAL ABOUT THOSE CENTERLINES WITHIN HALF THE TOTAL TOLERANCE.



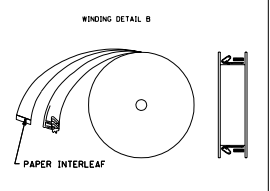
41572-\*\*\*\*\*  
MATERIAL: L+SEE NOTE 5  
FORM: L+LOOSE BLANK+CHAIN PER DETAIL A  
PLATING: PER SDES-88  
+P909) OVERALL HOT TIN DIP: .00254 MICROMETERS MIN  
(550) SELECT GOLD: .00038 MICROMETERS MIN.  
OVERALL GOLD FLASH: .00005 MICROMETERS MIN.  
OVERALL NICKEL UNDERPLATE: .00076 MICROMETERS MIN.  
(555) SELECT GOLD: .00038 MICROMETERS MIN.  
OVERALL NICKEL UNDERPLATE: .00076 MICROMETERS MIN.

\*THE PRIMARY SHIPPING CARTON WILL BE LABELED "COMPLIANT TO RoHS DIRECTIVE 2002/95/EC AND ELV ANNEX II OF DIRECTIVE 2000/53/EC. CARTONS WITHOUT THIS LABEL MAY CONTAIN PRODUCT WITH TIN-LEAD PLATING."

PART NO.	ENG NO.
08-65-0804	41572-A(P909)
08-65-0805	41572-A(P909)IL
	41572-A(555)
	41572-A(555)IL
	41572-A(550)
	41572-A(550)IL

ADD TO CAD FOR LAYOUT 3-19-93 SAMEC

DATE	REV.	BY	CHKD	APP'D	DESCRIPTION
11/19/93	1	WJ	WJ		CRIMP TERMINAL 22-30 GA WIRE SAME AS 6459 EXCEPT CAT EAR
11/19/93	1	WJ	WJ		MOLDEX INCORPORATED
3/19/93	1	WJ	WJ		SD-41572



20 19 18 17 16 15 14 13 12 11 10 9 8 7 6 5 4 3 2 1