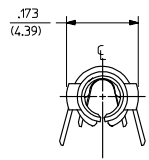
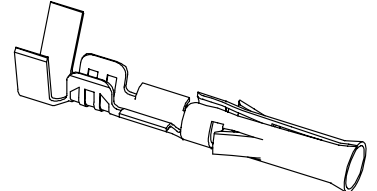
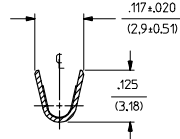
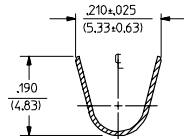
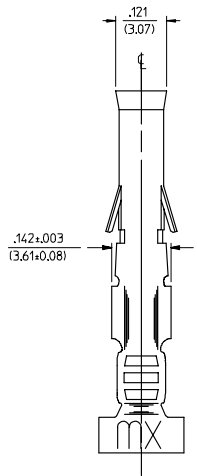
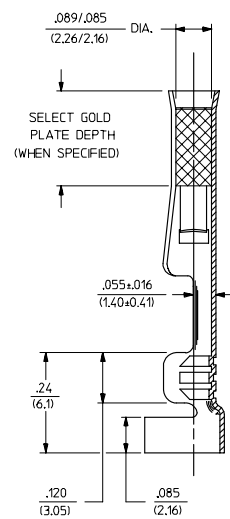
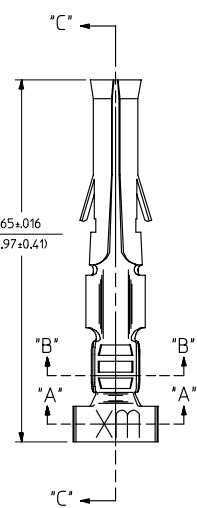


PART NO.	ENG. NO.
02-09-1104	1189-AIP901IL
02-09-1102	1189-AIP901
02-09-5111	1189-AIP591IL
02-09-5102	1189-AIP591
02-09-5106	1189-AIP550IL
02-09-5100	1189-AIP550



LEGEND

1189-A(****)*
 *FORM BLANK=CHAIN
 *L=LOOSE
 P=PREPLATE BLANK=POSTPLATE
 FINISH CODE



SECT. "C-C"



- NOTES:
- MATERIAL: CARTRIDGE BRASS, ALLOY #C26000, .010/(0.25) THICK
 - FINISH CODES:
 - 901 HOT TIN DP .000020/(0.00051) MN.
 - 591 SELECT GOLD PLATE .000050/(0.00127) MN. IN CONTACT AREA, OVER .000050/(0.00127) MN. NICKEL OVERALL WITH .000010/(0.00025) MAX. GOLD FLASH OVERALL.
 - 550 SELECT GOLD PLATE .000015/(0.00038) MN. IN CONTACT AREA, OVER .000030/(0.00076) MN. NICKEL OVERALL WITH .000010/(0.00025) MAX. GOLD FLASH OVERALL.
 - *THE PRIMARY SHIPPING CARTON WILL BE LABELED, "COMPLIANT TO RoHS DIRECTIVE 2002/95/EC AND ELV ANNEX OF DIRECTIVE 2000/53/EC", AND CARTONS WITHOUT THIS LABEL MAY CONTAIN PRODUCT WITH TIN-LEAD.
 - THIS PART CONFORMS TO PROD. SPEC. 02-09.
 - PACKAGING INFORMATION: NOT AVAILABLE
 - TERMINAL FOR USE WITH .093/(2.36) SERIES HOUSINGS AND WILL ACCEPT 14 THRU 20 AWG WIRE.
 - INSERTION FORCE: 3.5 LBS. MAX. WHEN TERMINAL IS INSERTED INTO AN .093 SERIES HOUSING.
 - RETENTION: 20 LBS. MIN. FROM HOUSING.

ADDED PARTS EC NO: UCP2006-1061 DRAWN BY: JORNBETERSON 2005/11/18 CHECKED BY: CHRIS SMITH 2005/11/29 APPROVED BY: JEFFREY SMITH 2005/12/02	QUALITY SYMBOLS ▽=0 ▽=0	GENERAL TOLERANCES (UNLESS SPECIFIED)	DIMENSION STYLE IN/MM	SCALE 6:1	DESIGN UNITS INCH	THIRD ANGLE PROJECTION
		4 PLACES ± --- ± ---	DRAWN BY SEP	DATE 1987/10/26	TITLE CRIMP TERMINAL, FEMALE, .093/(2.36) DIA. 14-20 AWG	
		3 PLACES ± --- ± .010	CHECKED BY RW	DATE 1987/10/26	MOLEX INCORPORATED	
		2 PLACES ± 0.25 ± .014	APPROVED BY RAS	DATE 1987/10/26	MATERIAL NO. SD-1189-*	DOCUMENT NO. SD-1189-*
	1 PLACE ± 0.35 ± ---	ANGULAR ±1/2°	DRAFT WHERE APPLICABLE MUST REMAIN WITHIN DIMENSIONS			
THIS DRAWING CONTAINS INFORMATION THAT IS PROPRIETARY TO MOLEX INCORPORATED AND SHOULD NOT BE USED WITHOUT WRITTEN PERMISSION						