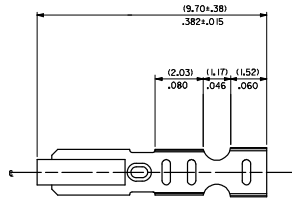
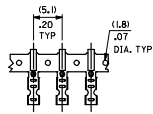


20 19 18 17 16 15 14 13 12 11 10 9 8 7 6 5 4 3 2 1

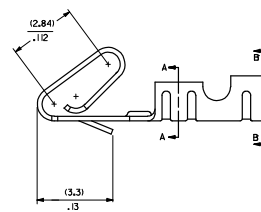
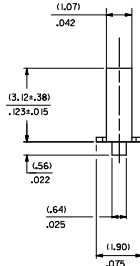
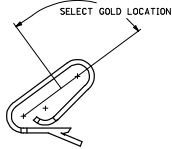
CARRIER VIEW



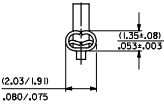
NOTES

1. MATERIAL
10.2030G.0101/0080+.0004 THICK BRASS
2. FINISH
102 - OVERALL TIN: (0.00508)/000200 MIN. TIN OVER
(0.00254)/000100 MIN. COPPER
122 - OVERALL TIN: (0.00381)/000150 MIN. TIN OVER
(0.00076)/000030 MIN. NICKEL
#P909 - OVERALL HOT TIN DP: (0.00254)/000100 MIN.
550 - SELECT GOLD: (0.00038)/000015 MIN.
OVERALL GOLD FLASH: (0.00059)/000002 MIN.
OVERALL NICKEL UNDERPLATE: (0.00076)/000030 MIN.
555 - SELECT GOLD: (0.00038)/000015 MIN.
OVERALL NICKEL UNDERPLATE: (0.00076)/000030 MIN.
558 - SELECT GOLD: (0.00076)/000030 MIN.
OVERALL GOLD FLASH: (0.00059)/000002 MIN.
OVERALL NICKEL UNDERPLATE: (0.00127)/000050 MIN.
*THE PRIMARY SHIPPING CARTON WILL BE LABELED "COMPLIANT TO RoHS
DIRECTIVE 2002/95/EC AND ELV ANNEX I OF DIRECTIVE 2000/53/EC."
CARTONS WITHOUT THIS LABEL MAY CONTAIN PRODUCT WITH TIN-LEAD PLATING.
3. PRODUCT SPEC: PS-0-07
4. PACKAGING SPECIFICATION: NONE
5. CRIMP IS FOR 22-30 GA WIRE WITH (157)/.062 DIA INSULATION MAX.
6. INSERTION FORCE OF TERMINAL INTO (2.54)/100 CENTERLINE CONNECTOR IS 2.5 LBS. MAX
7. TERMINALS WILL RETAIN 8 LBS PULL FOR 1 MIN. IN A (2.54)/100 CENTERLINE HOUSING.
8. DIMENSIONS GIVEN ACROSS CENTERLINES ARE SYMMETRICAL ABOUT THOSE CENTERLINES WITHIN HALF THE TOTAL TOLERANCE.
9. CODE LETTER PRECEDING PART NO. DESIGNATES MANUFACTURING LOCATION: IRELAND
10. THIS PART CONFORMS TO CLASS B REQUIREMENTS OF COSMETIC SPECIFICATION PS-45499-002.

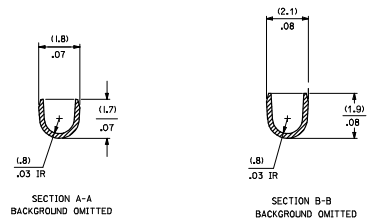
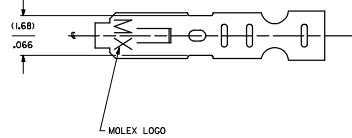
SELECT GOLD LOCATION



CRIMP DETAIL



CRIMPED TERMINAL 2759-IP90 IRLC IS USED WITHOUT WIRE AND IS INSERTED INTO HEADERS DURING SHIPMENT.



2759-(****) *
FORM
L=LOOSE
C=LOOSE CRIMPED
A=CHAIN PER ES-339-A
B=CHAIN PER ES-339-B
PLATING
SEE NOTE 2

QUALITY SYMBOLS ▽=0 ▽=0	GENERAL TOLERANCES (UNLESS SPECIFIED) DIM INCH 4 PLACES ± .010 3 PLACES ± .010 2 PLACES ± .025 1 PLACE ± 0.36 ANGULAR ± 1/2°		DIMENSION STYLE MM/IN DRAWN BY: SAMIEC DATE: 07/28/87 CHECKED BY: PATEL DATE: 07/28/87 APPROVED BY: LENZ DATE: 07/28/87		SCALE: --- DESIGN UNITS: INCH THIRD ANGLE PROJECTION
	DRAFT WHERE APPLICABLE MUST REMAIN WITHIN DIMENSIONS		MATERIAL NO. SD-2759 DOCUMENT NO. SD-2759		MOLEX INCORPORATED SHEET NO. 1 OF 2

19 18 17 16 15 14 13 12 11 10 9 8 7 6 5 4 3 2 1

2759-(****)*									
PART NO.	ENG. NO.	PART NO.	ENG. NO.	PART NO.	ENG. NO.	PART NO.	ENG. NO.	PART NO.	ENG. NO.
08-55-0101	2759-(555)B								
08-55-0102	2759-(555)H								
08-55-0126	2759-(555)A								
08-56-0109	2759-(550)B								
08-56-0110	2759-(550)H								
08-50-0113	2759-(P909)B								
08-50-0114	2759-(P909)H								
08-50-0124	2759-(P909)C								
08-51-0108	2759-(122)B								
	2759-(122)H								
I 08-50-0274	2759-(P909)B								
I 08-50-0275	2759-(P909)H								
I 08-50-0273	2759-(P909)A								
08-55-0130	2759-(558)B								
08-55-0131	2759-(558)H								
08-50-0160	2759-(102)H								
08-50-0159	2759-(102)								

REMOVE *999 PARTS REC. NO. LCP2008-0222 2007/08/02 DRAFTER 4-CHOD/BELL 2007/08/02 APPROVED JAP/PC/3/16 2007/08/02 DESCRIPTION	QUALITY SYMBOLS 	GENERAL TOLERANCES (UNLESS SPECIFIED) <table border="1"> <tr><th></th><th>mm</th><th>INCH</th></tr> <tr><td>4 PLACES ±</td><td>±.05</td><td>±.002</td></tr> <tr><td>3 PLACES ±</td><td>±.03</td><td>±.001</td></tr> <tr><td>2 PLACES ±</td><td>±.02</td><td>±.0005</td></tr> <tr><td>1 PLACE ±</td><td>±.01</td><td>±.0002</td></tr> </table> ANGULAR ±1/2°		mm	INCH	4 PLACES ±	±.05	±.002	3 PLACES ±	±.03	±.001	2 PLACES ±	±.02	±.0005	1 PLACE ±	±.01	±.0002	DIMENSION STYLE MM/IN	SCALE ---	DESIGN UNITS INCH	THIRD ANGLE PROJECTION
	mm	INCH																			
4 PLACES ±	±.05	±.002																			
3 PLACES ±	±.03	±.001																			
2 PLACES ±	±.02	±.0005																			
1 PLACE ±	±.01	±.0002																			
DRAWN BY DATE SAM/EC 07/28/87			TITLE CRIMP TERMINAL 22-30 GA WIRE																		
CHECKED BY DATE PATEL 07/28/87			APPROVED BY DATE LENZ 07/28/87																		
DRAFT WHERE APPLICABLE MUST REMAIN WITHIN DIMENSIONS			MATERIAL NO. SEE CHART SIZE D		DOCUMENT NO. SD-2759 SHEET NO. 2 OF 2																
THIS DRAWING CONTAINS INFORMATION THAT IS PROPRIETARY TO MOLEX INCORPORATED AND SHOULD NOT BE USED WITHOUT WRITTEN PERMISSION																					