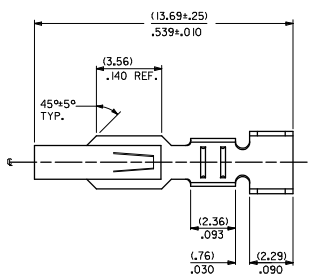
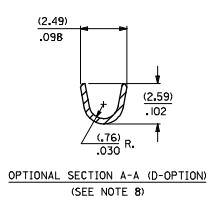
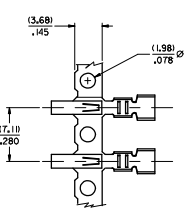


20 19 18 17 16 15 14 13 12 11 10 9 8 7 6 5 4 3 2 1



2478- \* - \* - \*

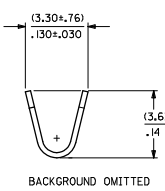
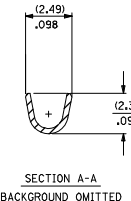
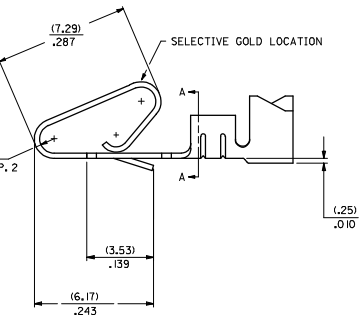
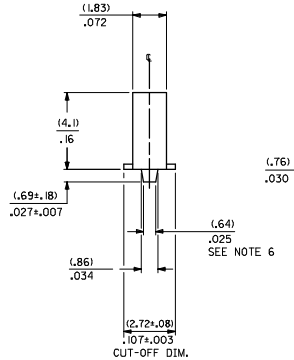
MATERIAL CODE  
L=27/.0106 THK  
I=BRASS  
3=PHOS BRONZE

OPTION CODE  
BLANK=AS SHOWN  
C=CAT EAR OPTION  
D=OPTIONAL CONDUCTOR CRIMP (FOR IRELAND)  
(SEE OPT. SECTION A-A) WITHOUT CAT EARS  
E=LOW INSERTION FORCE OPTION

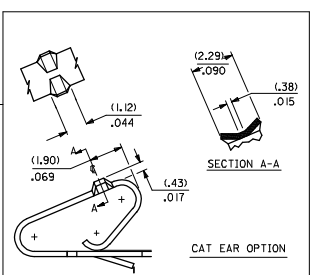
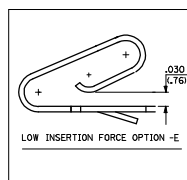
WINDING SPEC.  
A=PER ES-339-A  
BLANK=PER ES-339-B  
L=LOOSE

FINISH: PER SDES-88  
(P909) \*OVERALL HOT TIN DIP: 2.54 MICROMETERS MIN.  
(550) SELECT GOLD: 0.38 MICROMETERS MIN.  
OVERALL GOLD FLASH: 0.05 MICROMETERS MIN.  
OVERALL NICKEL UNDERPLATE: 0.76 MICROMETERS MIN.  
(555) SELECT GOLD: 0.38 MICROMETERS MIN.  
OVERALL NICKEL UNDERPLATE: 0.76 MICROMETERS MIN.

\*THE PRIMARY SHIPPING CARTON WILL BE LABELED 'COMPLIANT TO RoHS DIRECTIVE 2002/95/EC AND ELV ANNEX II OF DIRECTIVE 2000/53/EC'. CARTONS WITHOUT THIS LABEL MAY CONTAIN PRODUCT WITH TIN/LEAD PLATING.



- NOTES:
- CRIMP ACCEPTS 18 TO 24 GA. WIRE WITH (2.79)/.110 MAX. INSUL. DIA. WHEN USED WITH 2574 CONNECTOR.  
(2.54)/.100 MAX. INSUL. DIA. WHEN USED WITH 2139 CONNECTOR.  
HOUSING 41695 IS RECOMMENDED FOR OVER (2.54)/.100 DIA. INSULATION.  
CRIMP ACCEPTS (3.00)/.118 MAX. INSUL. DIA. WITH SPECIAL TOOLING.
  - DIMENSIONS GIVEN ACROSS CENTERLINES ARE SYMMETRICAL ABOUT THOSE CENTERLINES WITHIN HALF THE TOTAL TOLERANCE.
  - 
  - 
  - 
  - (.86±.05)/.034±.002 IS AN OPTIONAL DESIGN.
  - THIS PART CONFORMS TO PRODUCT SPEC. 08-50.
  - CONDUCTOR CRIMP FOR 16 AWG. WIRE WITH .110 MAX. INSULATION DIA.



CHANGE TO MEIO EIC NO. IEP-2005-4602 W APPROVED BY: 2006/01/28 APPROVED BY: 2006/01/28	QUALITY SYMBOLS ▽=0 ▽=0	GENERAL TOLERANCES (UNLESS SPECIFIED) 4 PLACES ±.--- INCH 3 PLACES ±.--- ±.010 INCH 2 PLACES ±.025 ±.014 INCH 1 PLACE ±.036 ±.--- INCH ANGULAR ±1/2°	DIMENSION STYLE IN/MM DRAWN BY: DATE SAMIEC 06/03/86 CHECKED BY: DATE PATEL 06/03/86 APPROVED BY: DATE LENZ 06/03/86	SCALE DESIGN UNITS INCH THIRD ANGLE PROJECTION
	DRAFT WHERE APPLICABLE MUST REMAIN WITHIN DIMENSIONS			SEE CHART THIS DRAWING CONTAINS INFORMATION THAT IS PROPRIETARY TO MOLEX INCORPORATED AND SHOULD NOT BE USED WITHOUT WRITTEN PERMISSION
	MATERIAL NO. SD-2478 DOCUMENT NO. SD-2478		MOLEX INCORPORATED	
	SHEET NO. 1 OF 2		CRIMP TERMINAL .156 CENTERS 18 TO 24 GA WIRE	

h:\frame\_d\_p\_ah.t Rev. D 2004/06/28 19 18 17 16 15 14 13 12 11 10 9 8 7 6 5 4 3 2 1

2478-1-(****)		2478-3-(****)		2478-IC-(****)		2478-3C-(****)		2478-ID-(****)		2478-3E-(****)	
PART NO.	ENG. NO.	PART NO.	ENG. NO.	PART NO.	ENG. NO.	PART NO.	ENG. NO.	PART NO.	ENG. NO.	PART NO.	ENG. NO.
08-50-0105	2478-1-(P909)	08-52-0071	2478-3-(P909)	08-50-0014	2478-IC-(P909)	08-52-0044	2478-3C-(P909)	08-50-0055	2478-ID-(P909)		2478-3E-(P909)
08-50-0106	2478-1-(P909)I	08-52-0072	2478-3-(P909)I	08-50-0045	2478-IC-(P909)I	08-52-0045	2478-3C-(P909)I	08-50-0056	2478-ID-(P909)I		2478-3E-(P909)I
08-56-0105	2478-1-(550)	08-55-0114	2478-3-(555)	08-50-0047	2478-IC-(P102)	08-52-0023	2478-3C-(102)				2478-3E-(555)
08-56-0106	2478-1-(550)I	08-55-0115	2478-3-(555)I	08-50-0046	2478-IC-(P102)I	08-52-0024	2478-3C-(102)I				2478-3E-(550)I
08-55-0103	2478-1-(555)	08-52-0073	2478-3-(P102)	08-50-0091	2478-IC-(102)	08-52-0027	2478-3C-(122)				2478-3E-(550)
08-55-0104	2478-1-(555)I	08-52-0074	2478-3-(P102)I	08-50-0093	2478-IC-(102)I						2478-3E-(550)I
08-50-0146	2478-1-(109)	08-52-0811	2478-3-(102)			08-52-0047	2478-3C-(P102)I				
08-50-0147	2478-1-(109)I	08-52-0812	2478-3-(102)I			08-52-0046	2478-3C-(P102)				
08-50-0119	2478-1-(122)	08-50-0281	2478-3-(122)								
08-50-0120	2478-1-(122)I	2478-3-(122)I									
08-50-0271	2478-1-(P909)A	08-58-0121	2478-3-(550)								
	2478-1-(550)A	08-58-0122	2478-3-(550)I								
08-56-0153	2478-1-(507)	08-58-0103	2478-3-(59)I								
08-56-0154	2478-1-(507)I	08-58-0104	2478-3-(59)III								
	2478-1-(506)	08-58-0114	2478-3-(558)								
	2478-1-(506)I	08-58-0115	2478-3-(558)I								
08-50-0015	2478-1-(102)										
08-50-0016	2478-1-(102)I										
08-52-0114	2478-1-(P909)										
08-52-0115	2478-1-(P909)I										
	2478-1-(132)										
	2478-1-(132)I										
08-50-0001	2478-1-(P24)										
08-50-0006	2478-1-(P24)I										
08-50-0063	2478-1-(224)										
08-50-0064	2478-1-(224)I										
08-55-0133	2478-1-(56)I										
08-55-0134	2478-1-(56)III										
08-50-0073	2478-1-(P102)										
08-50-0074	2478-1-(P102)I										

SEE SHEET I	SEE SHEET I	SEE SHEET I	SEE SHEET I
SEE SHEET I	SEE SHEET I	SEE SHEET I	SEE SHEET I
SEE SHEET I	SEE SHEET I	SEE SHEET I	SEE SHEET I
SEE SHEET I	SEE SHEET I	SEE SHEET I	SEE SHEET I
SEE SHEET I	SEE SHEET I	SEE SHEET I	SEE SHEET I
SEE SHEET I	SEE SHEET I	SEE SHEET I	SEE SHEET I

REVISIONS	REVISIONS	REVISIONS	REVISIONS
REVISIONS	REVISIONS	REVISIONS	REVISIONS
REVISIONS	REVISIONS	REVISIONS	REVISIONS
REVISIONS	REVISIONS	REVISIONS	REVISIONS

IMPROVED FROM PREVIOUS EDITION  
 CRIMP TERMINAL  
 .156" C  
 8/24 AWG WIRE  
 MOLEX INCORPORATED  
 MOLEX 0806 2 06/12/86  
 SEE CHARTS SD-2478  
 SEE CHARTS SD-2478  
 FOR BOARD ORIENTATION AND DIMENSIONS  
 SEE CHARTS SD-2478  
 FOR BOARD ORIENTATION AND DIMENSIONS  
 SEE CHARTS SD-2478  
 FOR BOARD ORIENTATION AND DIMENSIONS