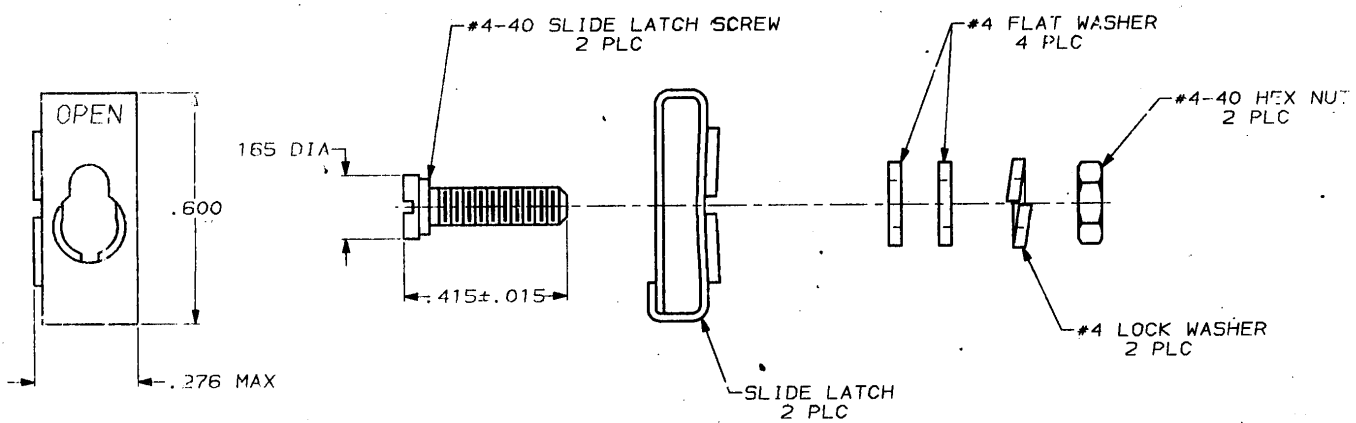


DRAWING MADE IN THIRD ANGLE PROJECTION

THIS DRAWING IS UNPUBLISHED. RELEASED FOR PUBLICATION .19  
 © COPYRIGHT 19 BY AMP INCORPORATED. ALL INTERNATIONAL RIGHTS RESERVED.

LOC	DIST	REVISIONS				DATE	APPD
BD	39	P	F	ZONE	LTR		
		F	✓		F	REVISED & REDRAWN PER ECN 2364	9/28/88



- 1. PARTS PACKAGED UNASSEMBLED.
- 2. PARTS PACKAGED AS A UNIT KIT.
- 3. PARTS INDIVIDUALLY BULK PACKED & SHIPPED AS A UNIT PACKAGE.
- 4. ZINC PLATED PER ASTM B633, TYPE II, CLASS SCI, YELLOW CHROMATE.
- 5. ZINC PLATED PER ASTM B633, TYPE III, CLASS SCI, CLEAR CHROMATE.
- 6. THIS KIT CAN BE USED WITH ONE-PIECE STRAIGHT/45° EXIT CABLE CLAMPS, ONE-PIECE STRAIGHT/90° EXIT CABLE CLAMPS, OR ON CONNECTORS WITHOUT CABLE CLAMPS.

6	OBsolete	5	#4-10	3	206942-4
6	OBsolete	5	#4-10	2	206942-3
		4	#4-10	3	206942-2
		4	#4-10	2	206942-1

DO NOT SCALE PRINT. UNLESS SPECIFIED DIMENSIONS IN INCHES TOLERANCES ON: 2 PLC DEC # .005 3 PLC DEC # .005 ANGLE # -	DR: 8-4-88 CHK: W.B. B... 8-7-88 APPR: R. J. ... 8-11-88 APPR: ... 8/11/88	AMP INCORPORATED Harrisburg, Pa. 17105
MATERIAL: SLIDE LATCH, STAINLESS STEEL HARDWARE, STEEL PER ASTM A108 FINISH: HARDWARE, SEE TABLE	HARDWARE FINISH: - THREAD TYPE: - APPLICATION SPEC: - WEIGHT: -	NAME: KIT, TWO-PIECE SLIDE LATCH, SIZES 1 THRU 4, AMPLIMITE® SIZE: B FISH NO: 00779 DRAWING NO: 206942 SCALE: 4:1 SHEET: 1 OF 1

CUSTOMER DRAWING