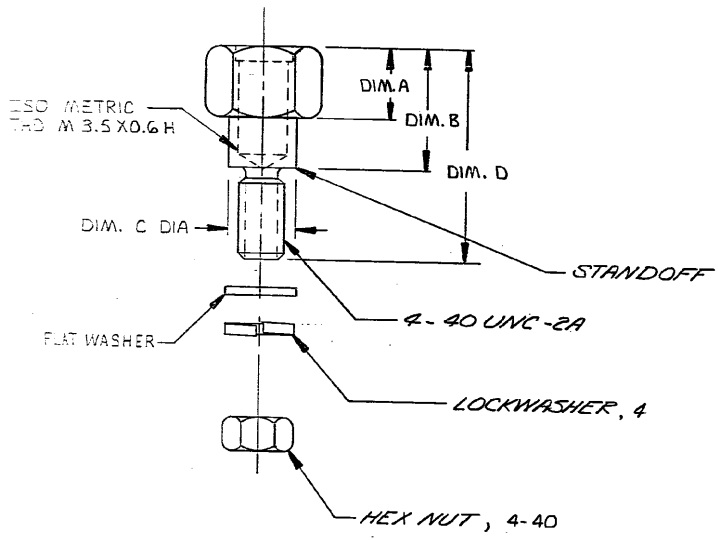


© COPYRIGHT 1976 BY AMP INCORPORATED, HARRISBURG, PA.
 ALL INTERNATIONAL RIGHTS RESERVED. AMP INCORPORATED PRODUCTS
 COVERED BY U. S. AND FOREIGN PATENTS AND/OR PATENTS PENDING.

UNPUBLISHED COPYRIGHT
 REPRODUCED FOR THE
 WITHOUT WRITTEN PERMISSION
 OF AMP INCORPORATED

P		F		REVISIONS		DATE	APPROVED
ZONE	LTR	DESCRIPTION		DATE	APPROVED		
✓	✓	C		REV: ECN AA-2992		7-16-84	<i>[Signature]</i>



1. ALL DIM. SHOWN ARE FOR REF ONLY.
 2. DIM. IN BRACKETS ARE IN INCHES.
 3. TWO REQD OF EACH PART PER KIT.
- ▲ MATL: STANDOFF - BLACK ZINC PLATED CARBON STL.
 NUT E LOCKWASHER - ZINC PLATED CARBON STL.
 FLAT WASHER - CARBON STEEL

D	C	B	A	PART NO
16.51	[.650]	4.7	[.185]	552633-4
		4.2	[.165]	552633-3
		8.5	[.335]	
		8.6	[.339]	
		4.9	[.193]	
		6.5	[.256]	

DIMENSIONS

UNLESS OTHERWISE SPECIFIED DIMENSIONS ARE IN INCHES. TOLERANCES ON DECIMALS ANGLES	CONTRACT NO	AMP INCORPORATED Harrisburg, Pa.	
	DR <i>[Signature]</i> 8-17-76	NAME KIT, HARDWARE, STANDOFF, STUD MOUNT (METRIC)	
	CHK <i>[Signature]</i> 8-17-76	SIZE B	NUMBER 552633
	APPD <i>[Signature]</i> 8-17-76	CODE IDENT NO 00779	SHEET 1 OF 1
MATERIAL ▲	DSGN APPD	SCALE NONE	
FINISH ▲	OTHER APPD		

CUSTOMER DRAWING