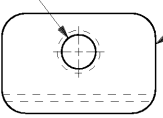


DRAWING MADE IN THIRD ANGLE PROJECTION

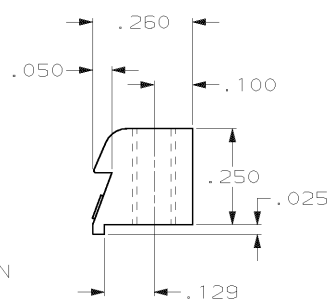
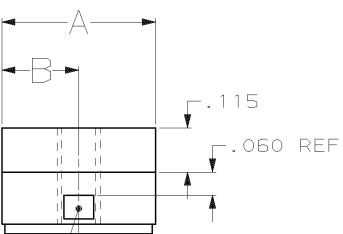
THIS DRAWING IS UNPUBLISHED. RELEASED FOR PUBLICATION, 19
 © COPYRIGHT 19 BY AMP INCORPORATED. ALL INTERNATIONAL RIGHTS RESERVED.

LOC	DIST	P	F	ZONE	LTR	REVISIONS	DATE	APPD
GP	00			E		REV PER QUID-0274-00	11/05/91	JR

THREAD
SEE TABLE



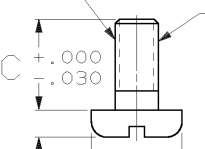
LATCHING BLOCK
QTY: 2
MATL: ZINC ALLOY



- 1. PARTS PACKAGED UNASSEMBLED.
- 2. PARTS PACKAGED AS A UNIT KIT.
- 3. PACKAGED 50 UNIT KITS PER PACKAGE.
- 4. OBSOLETE PART NUMBER.

THREAD
SEE TABLE

THREAD IDENTIFICATION
LOCATED IN THIS AREA



PAN HEAD SCREW
QTY: 2
MATL: COLD ROLLED STEEL
PER ASTM A108
FINISH: ZINC PLATED PER ASTM
B633, TYPE III, CLASS
SC1, CLEAR CHROMATE

.071 MAX
.236 MAX

3	M3X0.5	.236	.200	.400	1 THRU 4	4	745007-7
2	#4-40	.188	.265	.530	5	4	745007-6
2	#4-40	.188	.200	.400	1 THRU 4		745007-5
2	M3X0.5	.177	.265	.530	5	4	745007-4
2	M3X0.5	.177	.200	.400	1 THRU 4	4	745007-3
2	M3X0.5	.236	.265	.530	5	4	745007-2
2	M3X0.5	.236	.200	.400	1 THRU 4		745007-1
PACKAGING	THREAD SIZE	C	B	A	SIZE		PART NO

DO NOT SCALE PRINT. UNLESS SPECIFIED DIMENSIONS IN INCHES TOLERANCES ON: 2. PLC DEC ± .010 3. PLC DEC ± .010 ANGLES ± -	DR 5-20-88 C BICHARD CHK 5-20-88 S WELDON APPD 5-23-88 V KUBAS APPD 5-20-88 R WYNE	AMP INCORPORATED Harrisburg, Pa. 17105
MATERIAL SEE CALLOUTS	PRODUCT SPEC -	NAME KIT, LATCHING BLOCK, RS 449 TYPE, WITH SCREWS, AMPLIMITE®
FINISH SEE CALLOUTS	APPLICATION SPEC -	SIZE B FSCM NO 00779 DRAWING NO 745007
	WEIGHT -	SCALE 4:1 SHEET 1 OF 1

AMP 1470-15 REV 3-87

31-JAN-96 14:09:24 amp40973 /home/ssr/v026d/dsk01/dept4023/amp40973/edmod

CUSTOMER DRAWING