

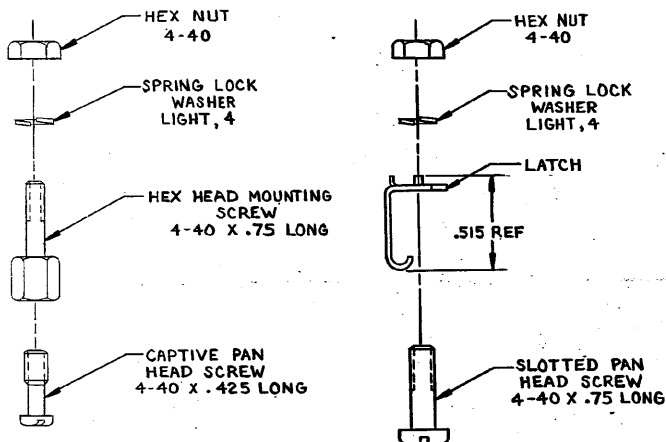
DRAWING MADE IN THIRD ANGLE PROJECTION

THIS DRAWING IS UNPUBLISHED, RELEASED FOR PUBLICATION, 19

© COPYRIGHT 1977 BY AMP INCORPORATED, HARRISBURG, PA. ALL INTERNATIONAL RIGHTS RESERVED. AMP PRODUCTS MAY BE COVERED BY U.S. AND FOREIGN PATENTS AND/OR PATENTS PENDING.

LOC AA DIST 20

REVISIONS						
P	F	ZONE	LTR	DESCRIPTION	DATE	APPROVED
B				REV PER ECN AA-4246	10/20/81	dmw TC



△ MATERIAL: CAPTIVE PAN HEAD SCREW-ZINC PLATED STEEL.

HEX HEAD SCREW - BRASS WITH CHROME PLATE.

ALL OTHER HARDWARE - PASSIVATED STAINLESS STEEL.

552690-1 AS SHOWN

UNLESS OTHERWISE SPECIFIED DIMENSIONS ARE IN INCHES. TOLERANCES ON: DECIMALS ± ANGLES ±		CONTRACT NO DR <i>A. Holt</i> 9-24-81 CHK <i>MD/ma</i> 9-26-81		AMP AMP INCORPORATED Harrisburg, Pa.	
MATERIAL	△	APPD <i>DR</i> 10/1/81 <i>APPD</i> 10/2/81	NAME KIT, HARDWARE, VERTICAL MOUNTING, CHAMP		
FINISH	△	OTHER APPD	SIZE B	FSCM NO 00779	DRAWING NO 552690
			SCALE 2/1	SHEET 1 OF 1	

CUSTOMER DRAWING

AMP 1470-18 REV 2-81