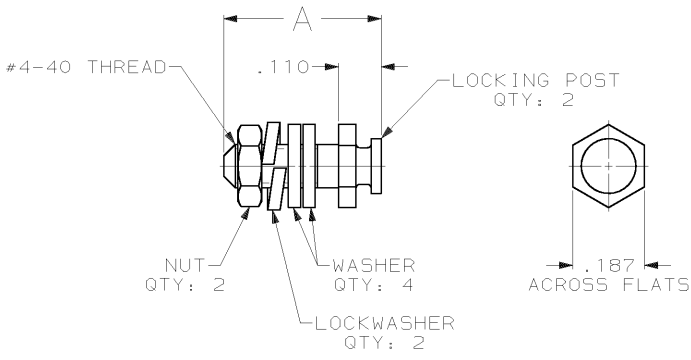


DRAWING MADE IN THIRD ANGLE PROJECTION

THIS DRAWING IS UNPUBLISHED. RELEASED FOR PUBLICATION, 19
 © COPYRIGHT 19 BY AMP INCORPORATED. ALL INTERNATIONAL RIGHTS RESERVED.

LOC	DIST	REVISIONS					
P	F	ZONE	LTR	DESCRIPTION	DATE	APPD	
GP	00			C	REV PER OUID-0274-00	22 OCT 01	JR



- 1 ZINC PLATED PER ASTM B633, TYPE II, CLASS SC1, YELLOW CHROMATE.
- 2 ZINC PLATED PER ASTM B633, TYPE III, CLASS SC1, CLEAR CHROMATE.
- 3. PARTS PACKAGED UNASSEMBLED.
- 4 PARTS PACKAGED AS A UNIT KIT.
- 5 PARTS INDIVIDUALLY BULK PACKAGED & SHIPPED AS A UNIT PACKAGE.

5	1	.560	206514-7
4	1	.560	206514-6
5	2	.410	206514-5
4	2	.410	206514-4
5	1	.410	206514-3
4	1	.410	206514-1

SUPERSEDED BY 206514-4

DR	CHK	APPD	APPD	PRODUCT SPEC	APPLICATION SPEC	WEIGHT	PACKAGING	FINISH	FINISH	PART NO	
-	-	-	-	-	-	-			A		
DO NOT SCALE PRINT. UNLESS SPECIFIED DIMENSIONS IN INCHES TOLERANCES ON: 1. PLC DEC ± .005 2. PLC DEC ± .010 3. PLC DEC ± .015 ANGLES ± .5°		AMP INCORPORATED Harrisburg, Pa. 17105		NAME		LOCKING POST KIT, AMPLIMITE®		SIZE	FSCM NO	DRAWING NO	
MATERIAL		COLD ROLLED STEEL PER ASTM A108		FINISH		SEE TABLE		B	00779	206514	
								SCALE	4:1	SHEET	1 OF 1

CUSTOMER DRAWING