

4

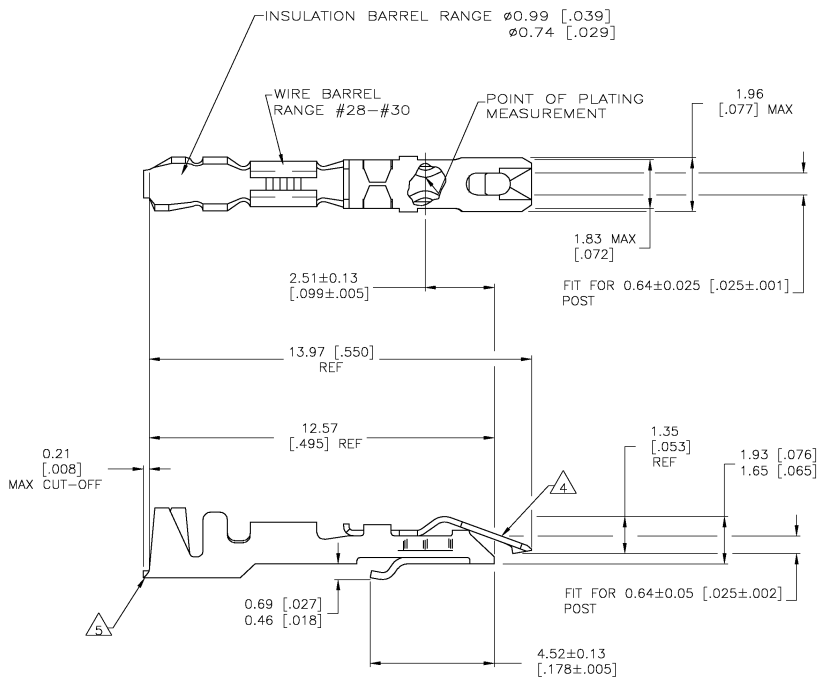
3

2

1

THIS DRAWING IS UNPUBLISHED. RELEASED FOR PUBLICATION
 © COPYRIGHT BY TYCO ELECTRONICS CORPORATION. ALL RIGHTS RESERVED.

LOC	DIST	REVISIONS			
P	LTR	DESCRIPTION	DATE	BY	APPD
M	EC	063C 0215 05			BSV/DLS



- 1 PLATED WITH 0.00076[.000030] GOLD IN CONTACT AREA, GOLD FLASH ON REMAINDER, OVER 0.00127[.000050] NICKEL.
- 2 PLATED WITH 0.00254[.000100] TIN-LEAD OVER 0.00127[.000050] NICKEL - ENTIRE CONTACT.
- 3 PLATED WITH 0.00127[.000050] GOLD OVER 0.00127[.000050] NICKEL - ENTIRE CONTACT.
- 4 SPRING MATERIAL: STAINLESS STEEL.
- 5 BODY MATERIAL: PHOS BRONZE - FINISH: SEE TABLE.
- 6 PLATED WITH 0.00254 [.000100] TIN OVER 0.00127 [.000050] NICKEL - ENTIRE CONTACT.

	6	5-87191-2	5-87190-2
OBSOLETE	3	87191-3	87190-3
	2	87191-2	87190-2
	1	87191-1	87190-1
		BODY FINISH	PART NO (LOOSE PIECE)
			PART NUMBER (STRIP)

THIS DRAWING IS A CONTROLLED DOCUMENT.		DRW E. BRANDBERG 9-23-94	Tyco Electronics Corporation Harrisburg, Pa 17105-3608	
DIMENSIONS: mm [INCHES]		CHK S. SHUJAY 9-23-94	NAME D. DUBIER	
TOLERANCES UNLESS OTHERWISE SPECIFIED:		APPD 9-23-94	PRODUCT SPEC 108-36028	
Ø PLG	±		APPLICATION SPEC 114-25006	SIZE A2
Ø PLG	±		WEIGHT	CAGE CODE (DRAWING NO) 00779C=87191
Ø PLG	±			RESTRICTED TO
H. PLG	±			
ANGLES	±			
MATERIAL	SEE CALLOUT	FINISH	SEE TABLE	CUSTOMER DRAWING
		SCALE 10:1		SHEET 1 OF 1 REV M

AMP 1471-9 REV 31MAR2000

87191

A