

4

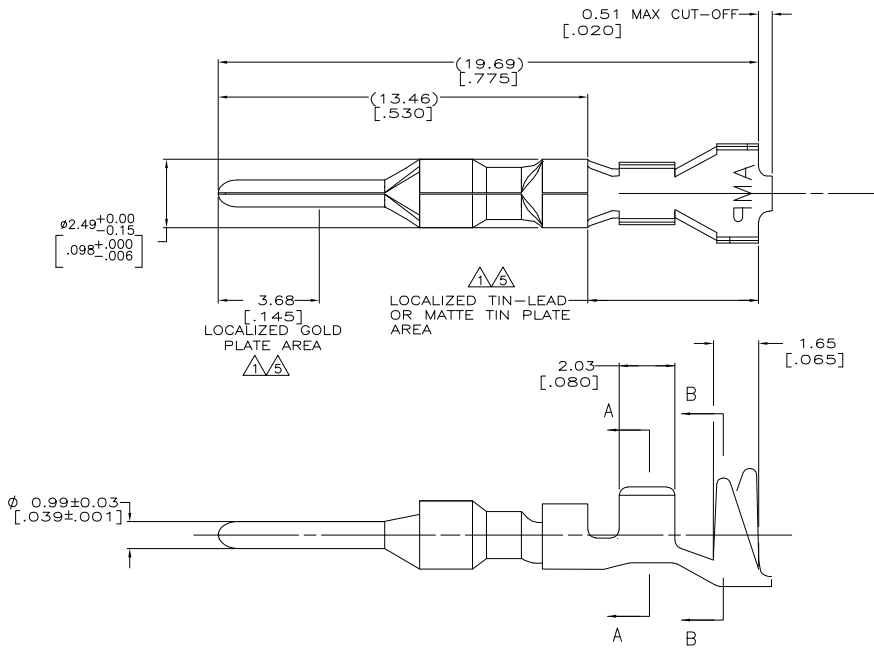
3

2

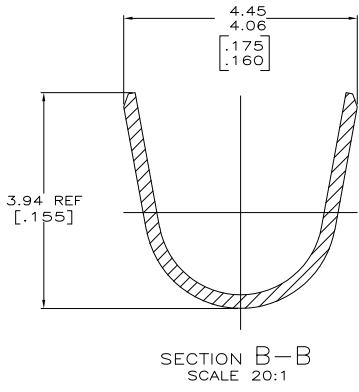
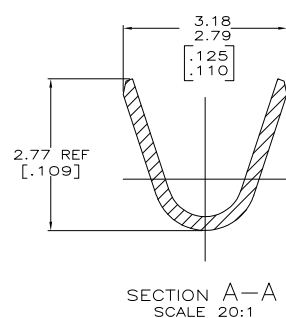
1

THIS DRAWING IS UNPUBLISHED. RELEASED FOR PUBLICATION.
 © COPYRIGHT BY TYCO ELECTRONICS CORPORATION. ALL RIGHTS RESERVED.

LOC		DIBT		REVISIONS		
P	LTR	DESCRIPTION	DATE	BY	APP'D	
D		REVISED PER 0638-0237-05	9/21/05	SS	CJ	



- 0.00076 [0.00030] MIN GOLD PER AMP SPEC 112-162-3 IN LOCALIZED GOLD PLATE AREA AND 0.00254-0.00635 [0.00100-.00250] BRIGHT TIN-LEAD PER AMP SPEC 112-26-1 IN LOCALIZED TIN-LEAD PLATE AREA OVER 0.00127 [0.00050] MIN NICKEL PER AMP SPEC 112-25-2.
 - WIRE RANGE: 0.5-1.4MM² (20-16 AWG).
 - INSULATION RANGE: 2.01-3.20[.079-.126] DIA.
 - DIMENSIONS IN BRACKETS ARE IN INCHES.
- 0.00076 [0.00030] MIN GOLD PER AMP SPEC 112-162-3 IN LOCALIZED GOLD PLATE AREA AND 0.00254-0.00635 [0.00100-.00250] MATTE TIN PER AMP SPEC 112-16-3 IN LOCALIZED TIN PLATE AREA OVER 0.00127 [0.00050] MIN NICKEL PER AMP SPEC 112-25-2.



Δ	0.25[.010] BRASS	1-794230-0
Δ	0.25[.010] BRASS	794230-3
PRE-TIN	0.25[.010] BRASS	794230-1
FINISH	MATERIAL	PART NUMBER

THIS DRAWING IS A CONTROLLED DOCUMENT.

DIMENSIONS: mm [INCHES]	TO MANUFACTURE TO DIMENSIONS SPECIFIED	DATE: 5-20-98	DATE: 5-20-98
0 PLC ±	1 PLC ±	2 PLC ±	3 PLC ±
4 PLC ± 0.15 [0.006]	ANGLE ±	FINISH	
MATERIAL: SEE TABLE	FINISH: SEE TABLE	PRODUCT SPEC: --	APPLICATION SPEC: --
SIZE: A2	CAGE CODE: 00779	DRAWING NO: C=794230	RESTRICTED TO: --
CUSTOMER DRAWING		SCALE: 10:1	SHEET: 1 of 1

DWG: B. LEWIS
 CHK: R. SWING
 APP'D: --
 NAME: --
 Tyco Electronics Corporation
 Harrisburg, PA 17105-3608
 PIN, MINI UNIVERSAL MATE-N-LOK 2

AMP 1471-9 REV 31MAR2000

794230

A

D