

4

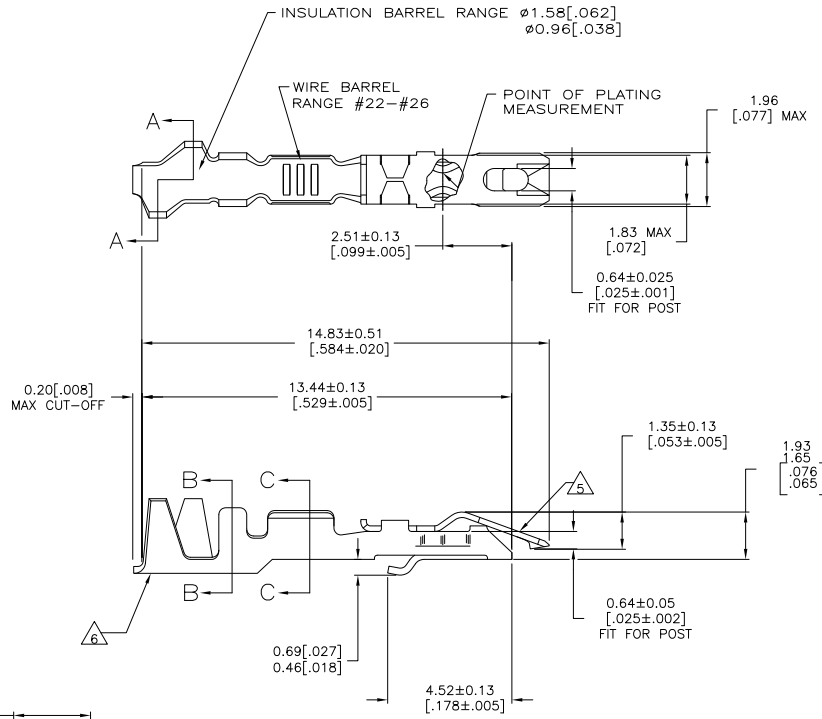
3

2

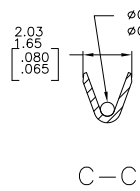
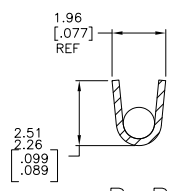
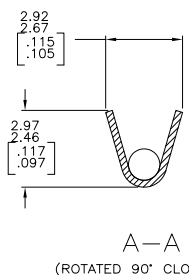
1

THIS DRAWING IS UNPUBLISHED. RELEASED FOR PUBLICATION. ALL RIGHTS RESERVED.

LOC	DIST	REVISIONS			
F	LNK	DESCRIPTION	DATE	BY	APPD
R1		REVISED PER ECO-11-004917	11MAR11	RK	HMR



- 1 PLATED WITH 0.00076[.000030] GOLD IN CONTACT AREA, GOLD FLASH ON REMAINDER, OVER 0.00127[.000050] NICKEL.
- 2 PLATED WITH 0.00127[.000050] GOLD IN CONTACT AREA, GOLD FLASH ON REMAINDER, OVER 0.00127[.000050] NICKEL.
- 3 PLATED WITH 0.00254[.000100] BRIGHT TIN-LEAD OVER 0.00127[.000050] NICKEL - ENTIRE CONTACT.
- 4 PLATED WITH 0.00127[.000050] GOLD OVER 0.00127[.000050] NICKEL - ENTIRE CONTACT.
- 5 SPRING MATERIAL: STAINLESS STEEL
- 6 BODY MATERIAL: PHOS BRONZE FINISH: SEE TABLE
- 7 PLATED WITH 0.00254[.000100] BRIGHT TIN OVER 0.00127[.000050] NICKEL - ENTIRE CONTACT.



Ø0.46 [.018] MUST BOTTOM IN WIRE BARREL  
 Ø0.79 [.031] MUST NOT BOTTOM IN WIRE BARREL.

OBSOLETE	87124-2	5-87165-2
	87124-4	87165-4
	87124-3	87165-3
	87124-2	87165-2
	87124-1	87165-1
BODY FINISH	STRIP PART NUMBER	PART NUMBER

THIS DRAWING IS A CONTROLLED DOCUMENT.		DRM E. BRANDBERG 23NOV04	TE Connectivity	
DIMENSIONS: mm [INCHES]		CHK S. SHUEY 23NOV04	CONTACT - LOCKING CLIP, FOR 0.64[.025] SQUARE POST, LOOSE PIECE	
TOLERANCES UNLESS OTHERWISE SPECIFIED:		APPRO D. DUPLER 23NOV04	NAME	
0 P.L.C.	±	PRODUCT SPEC	108-36028	
1 P.L.C.	±	APPLICATION SPEC	114-25006	
2 P.L.C.	±	SIZE	A2	
3 P.L.C.	±	ONE CODE	00779	
4 P.L.C.	±	DRAWING NO	C=87165	
ANGLES	±	RESTRICTED TO	-	
MATERIAL AS NOTED	FINISH SEE TABLE	CUSTOMER DRAWING	SCALE	10:1 SHEET 1 of 1 REV R1

1471-9 (3/11)

87165

A