

4

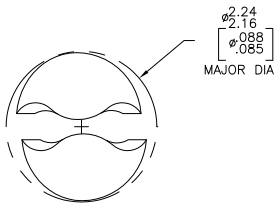
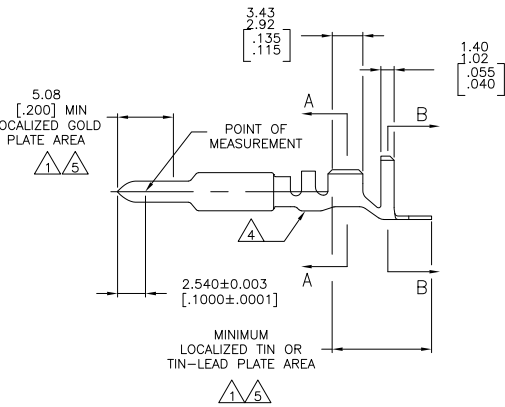
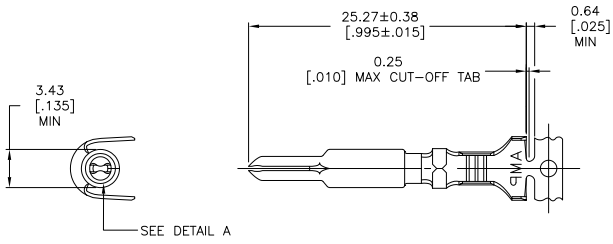
3

2

1

THIS DRAWING IS UNPUBLISHED. RELEASED FOR PUBLICATION  
 BY TYCO ELECTRONICS CORPORATION. ALL RIGHTS RESERVED.

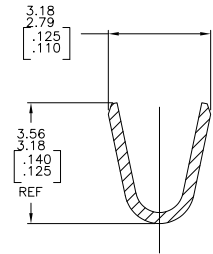
LOC	DIST	REVISIONS		DATE	BY	APP'D
CM	00	F	LWR			
		L		REVISED PER ECO-09-025490	17NOV09	HMR MS



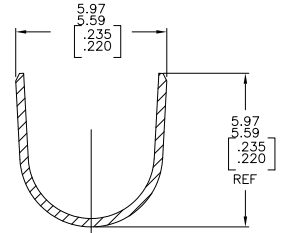
DETAIL A  
SCALE 20:1

METRIC

- 1 0.00076[.000030] MIN GOLD AT POINT OF MEASUREMENT IN THE LOCALIZED GOLD PLATE AREA, 0.00127[.000050] MIN TIN-LEAD IN TIN-LEAD PLATE AREA, 0.00127[.000050] MIN NICKEL UNDERPLATE ON ENTIRE CONTACT.
- 2 WIRE RANGE: 0.5-2mm<sup>2</sup> [20-14 AWG] INSULATION RANGE: 3.30-5.08 [.130-.200] DIA.
- 3 DIMENSIONS IN BRACKETS ARE IN INCHES.
- 4 LETTER "P" STAMPED IN THIS LOCATION.
- 5 0.00076[.000030] MIN GOLD AT POINT OF MEASUREMENT IN THE LOCALIZED GOLD PLATE AREA, 0.00127[.000050] MIN TIN IN TIN PLATE AREA, 0.00127[.000050] MIN NICKEL UNDERPLATE ON ENTIRE CONTACT.



SECTION A-A  
SCALE 10:1



SECTION B-B  
SCALE 10:1

4	GOLD	0.30 [.012] PH BRZ	1-770005-1
	GOLD	0.30 [.012] BRASS	1-770005-0
4	GOLD	0.30 [.012] PH BRZ	770005-4
4	PRE-TIN	0.30 [.012] PH BRZ	770005-3
	GOLD	0.30 [.012] BRASS	770005-2
	PRE-TIN	0.30 [.012] BRASS	770005-1
	FINISH	MATERIAL	PART NUMBER

DIMENSIONS		TOLERANCES UNLESS OTHERWISE SPECIFIED		FINISH		MATERIAL		PART NUMBER	
mm	[INCHES]	0 PLC	±	0	±				
		1 PLC	±	1	±				
		2 PLC	±	2	±				
		3 PLC	±	3	±				
		4 PLC	±	4	±				
		ANGLES	±		±				

DRW	S. CARPENTER	20MAY03	Tyco Electronics Corporation
CHK	D. JONES	20MAY03	Harrisburg, PA 17105-3608
APP'D	D. JONES	20MAY03	
PRODUCT SPEC			PIN, UNIVERSAL MATE-N-LOK(TM) II
APPLICATION SPEC			SIZE CASE CODE DRAWING NO
WEIGHT			A2 00779 C=770005
CUSTOMER DRAWING			RESTRICTED TO
			SCALE 4:1 SHEET 1 of 1 REV L

AMP 1471-9 REV 31MM2000

770005

A