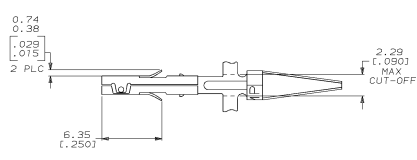
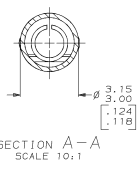
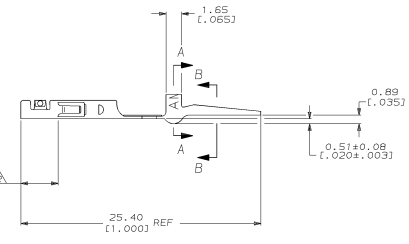
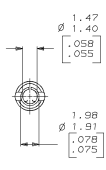


THIS DRAWING IS UNPUBLISHED.
 RELEASED FOR PUBLICATION
 BY AMP INCORPORATED. ALL INTERNATIONAL RIGHTS RESERVED.

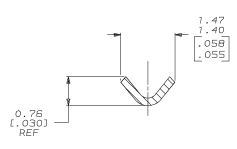
REVOLUTIONS		DATE	APP
CM	52		
REV	PER	EC	0730-0058-05



1. DIMENSIONS IN BRACKETS ARE IN INCHES.
2. Δ 0.00076 (1.000000) MIN GOLD STRIPE IN THIS AREA OVER 0.00127 (1.000000) MIN NICKEL.
3. USED WITH MRI AND MRII PLUG HOUSINGS.



SECTION A-A
SCALE 10:1



SECTION B-B
SCALE 20:1

FINISH	MATERIAL	PART NO
GOLD STRIPE	0.20 (1.008) PHOS BRZ	350838-2
PRE-TIN	0.20 (1.008) PHOS BRZ	350838-1

DO NOT SCALE PRINT. UNLESS SPECIFIED, DIMENSIONS IN mm (INCHES) TOLERANCES: DR 3-21-95 C-34RON 3-21-95 0.34MM 3-21-95 0.13 (1.000) 3 PLC DEC # - ANGLES # -	DR 3-21-95 C-34RON 3-21-95 0.34MM 3-21-95 0.13 (1.000) 3 PLC DEC # - ANGLES # -	NAME
MATERIAL	APPD 3-21-95 M. LING	MR .058 SOCKET, WITH SOLDER TAIL
SEE TABLE	PRODUCT SPEC	
FINISH	APPLICATION SPEC	SIZE
SEE TABLE		D 00773
WEIGHT		SCALE
		5:1

METRIC

THIS DRAWING IS A CONTROLLED DOCUMENT FOR AMP INCORPORATED. IT IS SUBJECT TO CHANGE AND THE CONTROLLING ORGANIZATION SHOULD BE CONTACTED FOR THE LATEST REVISION.