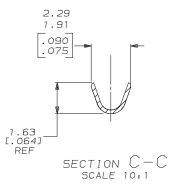
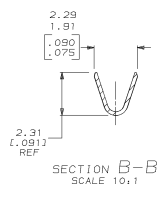
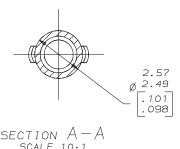
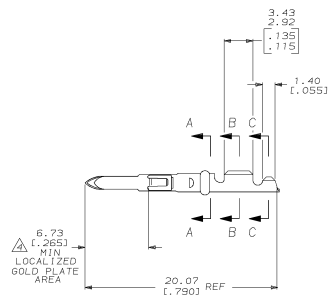
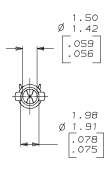
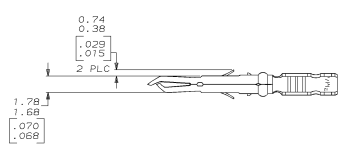


MAKING MADE IN NORTH AMERICA PROJECTION
 THIS DRAWING IS UNPUBLISHED
 RELEASED FOR PUBLICATION
 BY AMP INCORPORATED. ALL INTERNATIONAL RIGHTS RESERVED.

REVOLUTIONS		DESCRIPTION		DATE	APP
CM	52	REV	REDAWN PER EC 0730-005B-55	3-21-88	ES

- 1 WIRE RANGE; 0.13-0.2mm² (26-24 AWG).
 - 2 INSULATION RANGE; 0.64-1.27 (.025-.050) MAX. DIA.
 - 3 DIMENSIONS IN BRACKETS ARE IN INCHES.
- ▲ TIP PLATE WITH 0.00075-0.00091 (.000030-.000036) MIN GOLD IN THE LOCALIZED GOLD PLATE AREA OVER 0.00127 (.000050) MIN NICKEL UNDERPLATE.



▲ GOLD PLATE	0.20 (.008) PHOS BRZ	640579-2
PRE-TIN	0.20 (.008) PHOS BRZ	640579-1
FINISH	MATERIAL	PART NO

DO NOT SCALE PRINT. UNLESS SPECIFIED DIMENSIONS IN mm (INCHES) TOLERANCES: DR 3-21-85 C-34RON CKR 3-21-85 2 PLC DEC 4.0 (1.00) 3 PLC DEC 4.0 (1.00) ANGLES 30°	DR 3-21-85 C-34RON CKR 3-21-85 2 PLC DEC 4.0 (1.00) 3 PLC DEC 4.0 (1.00) ANGLES 30°	NAME	AMP Incorporated Harrisburg, PA 17105-3608
MATERIAL	APPD 3-21-85 M-LONG	PRODUCT SPEC	PIN, LOOSE PIECE, MR
FINISH	SEE TABLE	APPLICATION SPEC	SIZE D CASE CODE 00773 DRAWING NO. 640579
WEIGHT	SEE TABLE	SCALE	5:1 SHEET 1 OF 1

METRIC

THIS DRAWING IS A CONTROLLED DOCUMENT FOR AMP INCORPORATED. IT IS SUBJECT TO CHANGE AND THE CONTROLLING AND REVISION ORGANIZATION SHOULD BE CONTACTED FOR THE LATEST REVISION.