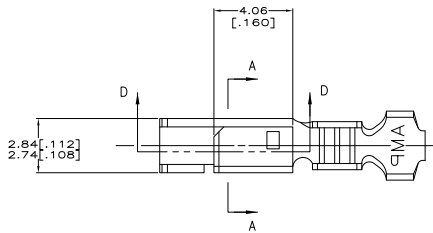
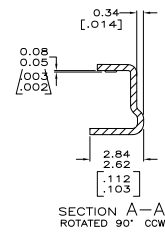
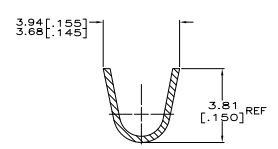
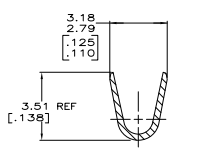
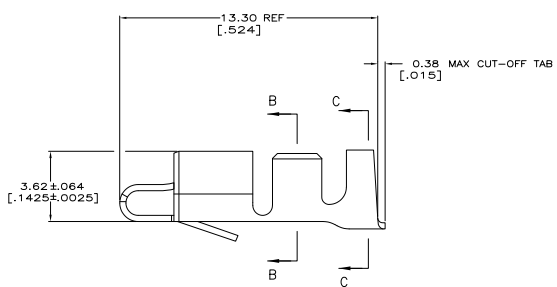
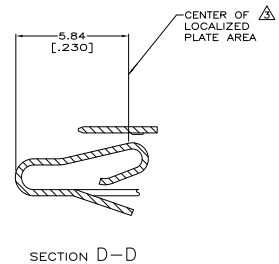


REV	DATE	DESCRIPTION	BY	APP
CM 00				
A	02-07-2025			



- INSULATION RANGE: 1.78-2.84 [.070-.112]
 WIRE RANGE: NOT TO EXCEED 2550-2800 CMA (1.29-1.42 mm²)
 (LIMITED 16 AWG RANGE).
- 0.00203 [.000080] MIN BRIGHT TIN-LEAD OVER
 0.00127 [.000050] MIN NICKEL.
- 0.00076 [.000030] MIN THICK GOLD STRIPES IN
 LOCALIZED PLATE AREA ON BEAM AND DIMPLE OVER
 0.00127 [.000050] MIN THICK NICKEL OVER ENTIRE
 CONTACT.
- DIMENSIONS IN BRACKETS ARE IN INCHES.
- FOR USE ONLY WITH LID STYLE HOUSING.
- 0.00203 [.000080] MIN BRIGHT TIN OVER
 0.00127 [.000050] MIN NICKEL.



3-647485-1
647485-2
647485-3
FINISH PART NUMBER



THIS DRAWING IS A CONTROLLED DOCUMENT.		DATE: 10-20-2001	BY: [Signature]	APP: [Signature]	REV: [Signature]
UNLESS OTHERWISE SPECIFIED:	UNLESS OTHERWISE SPECIFIED:	UNLESS OTHERWISE SPECIFIED:	UNLESS OTHERWISE SPECIFIED:	UNLESS OTHERWISE SPECIFIED:	UNLESS OTHERWISE SPECIFIED:
DIMENSIONS: IN INCHES	TOLERANCES: UNLESS OTHERWISE SPECIFIED	FINISH: UNLESS OTHERWISE SPECIFIED	TEMPERATURE: UNLESS OTHERWISE SPECIFIED	STOCK: UNLESS OTHERWISE SPECIFIED	REWORK: UNLESS OTHERWISE SPECIFIED
PH: 114-1021	DATE: 10-20-2001	BY: [Signature]	APP: [Signature]	REV: [Signature]	REV: [Signature]
CUSTOMER DRAWING	DATE: 10-20-2001	BY: [Signature]	APP: [Signature]	REV: [Signature]	REV: [Signature]