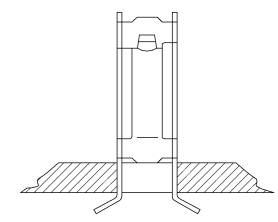
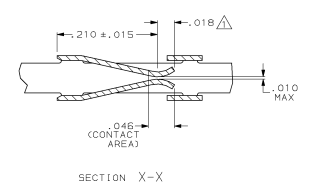
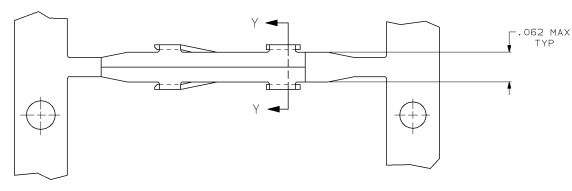
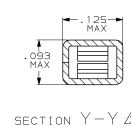
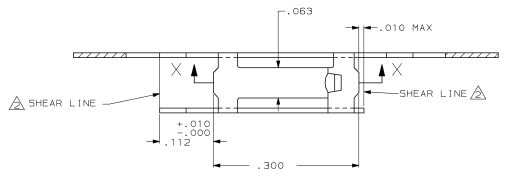
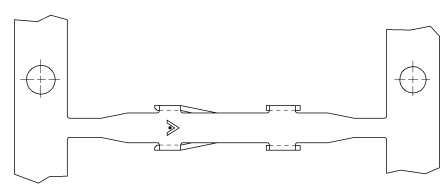


DRAWING MADE IN THIRD ANGLE PROJECTION
 THIS DRAWING IS UNPUBLISHED. RELEASED FOR PUBLICATION
 © COPYRIGHT 19 BY AMP INCORPORATED. ALL INTERNATIONAL RIGHTS RESERVED.

NO	OR	BY	DATE	DESCRIPTION	DATE	APPD
27	AD	39				
	F			REV REDRAWN PER AR2730	10-17-88	-
	G			REV PER ECK AR2785 & AR2734 JMS	11-14-88	-
	H			REV LOC 8 DIST AG-4171	3-30-89	BF
	J			REV PER 0010-0430-93	8-93	-
	K			REV PER 0010-1103-93	3-16-94	SAS
	L			REV PER 0010-1175-95	12-20-94	JH



- △ POINT OF MEASUREMENT FOR PLATING THICKNESS (INSIDE BEAMS)
- △ SHEAR LINES DEFINE LOOSE PIECE PART.
- △ PLAIN.
- △ .00030 GOLD OVER .000050 NICKEL ENTIRE TERMINAL.
- △ TIN PLATED.
- △ GOLD FLASH OVER .000050 NICKEL ENTIRE TERMINAL, .000030 GOLD IN CONTACT AREA ONLY.
- △ GOLD FLASH OVER .000050 NICKEL ENTIRE TERMINAL, .000015 GOLD IN CONTACT AREA ONLY.
- △ .00015 GOLD IN CONTACT AREA, .000100-.000200 BRIGHT TIN-LEAD ON TERMINATION AREA, ALL OVER .000050 NICKEL ENTIRE TERMINAL.
- △ .00030 GOLD IN CONTACT AREA, .000100-.000200 BRIGHT TIN-LEAD ON TERMINATION AREA, ALL OVER .000050 NICKEL ENTIRE TERMINAL.
- △ OBSOLETE PART NUMBER.

FINISH	REEL FOR APPLICATOR	LOOSE PIECE PART NO	PART NUMBER
△	MINIATURE	85423-7	1-85488-3
△	MINIATURE	85423-6	1-85488-2
△	MINIATURE	85423-5	85488-8
△	MINIATURE	85423-4	85488-7
△	MINIATURE		85488-6
△	MINIATURE		85488-5
△	STANDARD		85488-4
△	STANDARD	85423-3	85488-3
△	STANDARD	85423-2	85488-2
△		85423-1	85488-1

DO NOT SCALE PRINT, UNLESS SPECIFIED. DIMENSIONS IN INCHES. TOLERANCES: .015 ± P.L.E. DEC. ± .005 INCHES ± .		DR 10-17-89 D. HETZER		PART NO	
CHK 10-23-89 SCOTT & SNEY	APPD 10-23-89 NIMAN W. CLARK	AMP INCORPORATED RECEPTACLE, MOD I, STANDARD PRESSURE, TYPE A			
MATERIAL PHOS. BRONZE	APPD 10-23-89 B. FLEINBERG				
PRODUCT SPEC -	APPLICATION SPEC -	SIZE D	CAGE CODE C0779	DRAWING NO 85488	
WEIGHT -		SCALE 10:1		SHEET 1 OF 1	

CUSTOMER DRAWING