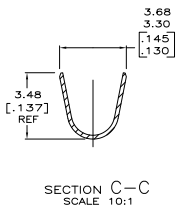
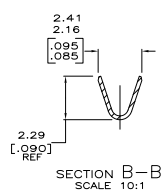
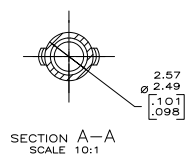
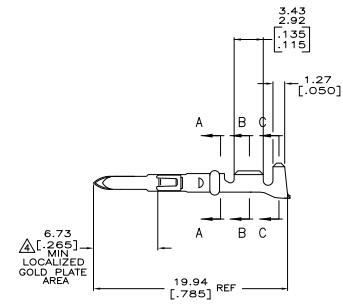
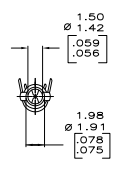
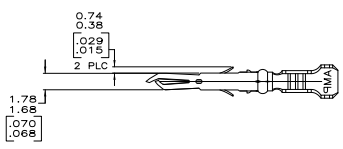


THIS DRAWING IS UNAPPROVED FOR PRODUCTION
 ALL WORK REQUIRED

REVOLUTIONS			
REV	DATE	BY	APP
CM	52		
CM	52		

- 1 WIRE RANGE: 0.12-0.9mm²(26-18 AWG).
 - 2 INSULATION RANGE: 1.27-2.92 [.050-.115] MAX. DIA.
 - 3 DIMENSIONS IN BRACKETS ARE IN INCHES.
- ▲ TIP PLATE WITH 0.00076-0.00091 [.00030-.00036] MIN GOLD IN THE LOCALIZED GOLD PLATE AREA OVER 0.00127 [.00050] MIN NICKEL UNDERPLATE.



▲ GOLD PLATE	0.20 [.008] PHOS BRZ	640545-2
PRE-TIN	0.20 [.008] PHOS BRZ	640545-1
FINISH	MATERIAL	PART NO

THIS DRAWING IS A CONTROLLED DOCUMENT		REV. SALMON	3-21-98	TE Connectivity
DIMENSIONS IN BRACKETS ARE IN INCHES		REV. S. SWING	3-21-98	
	PLATE	0.00076-0.00091		PIN, LOOSE PIECE, MR
	PLATE	0.00127-0.00152		
	PLATE	0.00127-0.00152		
	PLATE	0.00127-0.00152		
REV. SEE TABLE	SEE TABLE	REV. SEE TABLE	REV. SEE TABLE	REV. SEE TABLE
CUSTOMER DRAWING		SCALE	S:1	REV

