

4

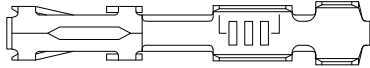
3

2

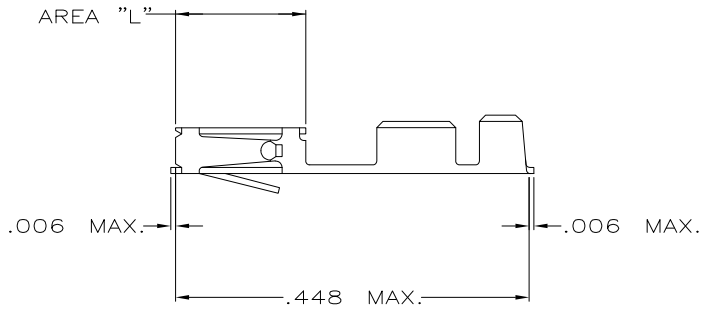
1

THIS DRAWING IS UNPUBLISHED. RELEASED FOR PUBLICATION
 © COPYRIGHT - By - ALL RIGHTS RESERVED.

LOC	DIST	REVISIONS			
P	LTR	DESCRIPTION	DATE	DWN	APVD
B1		REVISED PER ECO-11-004587	11MAR11	RK	HMR



1. LOOSE PIECE TERMINAL MUST MEET ALL APPLICABLE STRIP SPECIFICATIONS IN ADDITION TO THOSE SHOWN.
- ② .000030 MIN. GOLD OVER .000050-.000100 NICKEL.
- ③ GOLD FLASH OVER .000050-.000100 NICKEL .000030 GOLD ON CONTACT AREA.
- ④ PREPLATING: .000078-.000158 BRIGHT TIN (HALT) PER 112-20-6
- ⑤ .000050 GOLD OVER .000050-.000100 NICKEL.
- ⑥ GOLD FLASH OVER .000050-.000100 NICKEL .000015 GOLD ON CONTACT AREA.
- ⑦ GOLD FLASH ON AREA "L" .000050 GOLD ON CONTACT AREA. ALL OVER .000050-.000100 NICKEL ENTIRE CONTACT.



OBsolete	⑦	1-87666-6	87667-6
	⑥	87666-5	87667-5
	⑤	87666-4	87667-4
	④	87666-3	87667-3
	③	87666-2	87667-2
	②	87666-1	87667-1
FINISH		MAKE FROM STRIP PART NO.	PART NUMBER

THIS DRAWING IS A CONTROLLED DOCUMENT.		DWN M. BINNER 27JUN06	TE Connectivity	
DIMENSIONS: INCHES		CHK D. ROHDE 27JUN06	APVD D. ROHDE 27JUN06	
TOLERANCES UNLESS OTHERWISE SPECIFIED: 0 PLC ± - 1 PLC ± - 2 PLC ± .02 3 PLC ± .005 4 PLC ± .0005 ANGLES ± 0' 30"		NAME D. ROHDE	CONTACT, FEMALE, MOD IV, CRIMP SNAP-IN (LOOSE PIECE)	
MATERIAL SEE TABLE	FINISH SEE TABLE	APPLICATION SPEC -	SIZE A3	CAGE CODE 00779
		WEIGHT -	DRAWING NO C-87667	RESTRICTED TO -
CUSTOMER DRAWING			SCALE 8:1	SHEET 1 of 1
			REV B1	