

4

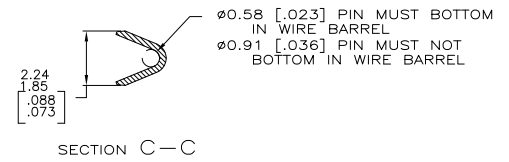
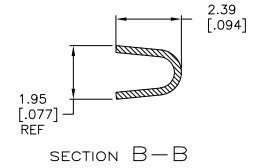
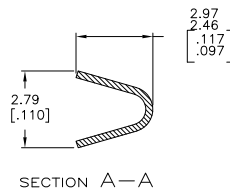
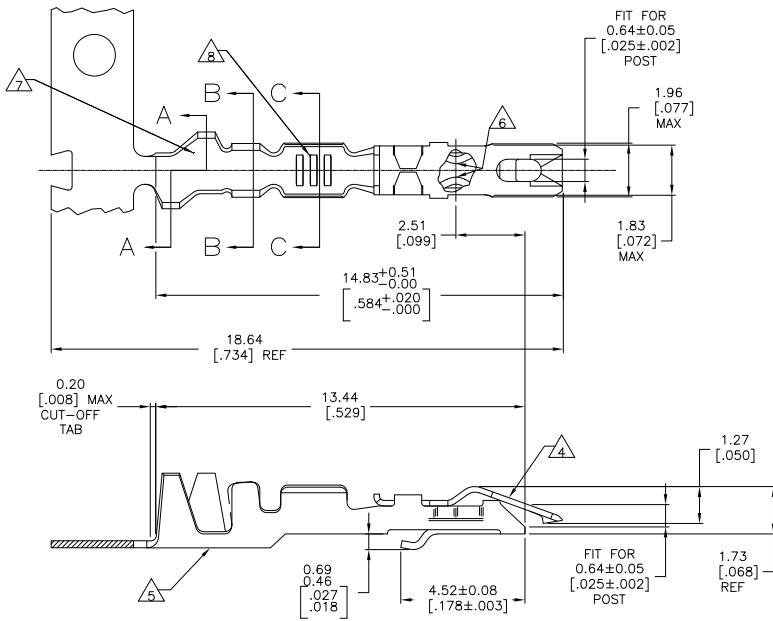
3

2

1

THIS DRAWING IS UNPUBLISHED. RELEASED FOR PUBLICATION. ALL RIGHTS RESERVED.

LOC	DIST	REVISIONS		
F	LWR	DESCRIPTION	DATE	BY
AD	00			
	Z1	REVISED PER ECO-11-004917	11MAR11	RK HMR



- 1. REELED FOR MINI APPLICATOR.
- △ PLATED WITH .00254 [.000100] TIN LEAD OVER .00127 [.000050] NICKEL ENTIRE CONTACT.
- △ PLATED WITH .00076 [.000030] GOLD IN CONTACT AREA, GOLD FLASH ON REMAINDER, OVER .00127 [.000050] NICKEL.
- △ SPRING MATERIAL: STAINLESS STEEL.
- △ BODY MATERIAL: PHOSPHORUS BRONZE (SEE TABLE FOR FINISH.)
- △ POINT OF PLATING MEASUREMENT.
- △ INSULATION BARREL RANGE Ø0.71 [.038]-Ø1.57 [.062].
- △ WIRE BARREL RANGE #20
- △ PLATED WITH .00254 (.000100) TIN OVER .00127 (.000050) NICKEL, ENTIRE CONTACT.

SUPERSEDED BY 5-867052-1

△	5-867052-1
△	867052-3
△	867052-2
△	867052-1
△	PART NUMBER

DIMENSIONS		TOLERANCES UNLESS OTHERWISE SPECIFIED		FINISH	
mm	[INCHES]	FRACTIONS	DECIMALS	AS SHOWN	AS SHOWN
0	PLC	±	—	AS SHOWN	AS SHOWN
1	PLC	±	—	AS SHOWN	AS SHOWN
2	PLC	±	—	AS SHOWN	AS SHOWN
3	PLC	±	0.1%(.005)	AS SHOWN	AS SHOWN
4	PLC	±	—	AS SHOWN	AS SHOWN
	ANGLES	±	—	AS SHOWN	AS SHOWN

THIS DRAWING IS A CONTROLLED DOCUMENT.		DRM	E. BRANDBERG	17-1-93
		CHK	S. SHUEY	26-1-93
		APP	—	—
		PRODUCT SPEC	108-36028	—
		APPLICATION SPEC	114-25006	—
		WEIGHT	—	—
MATERIAL	AS SHOWN	FINISH	AS SHOWN	CUSTOMER DRAWING

SIZE	00779	DRAWING NO	C-867052	RESTRICTED TO	—
SCALE	10:1	SHEET	1 of 1	REV	Z1