

4

3

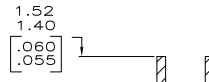
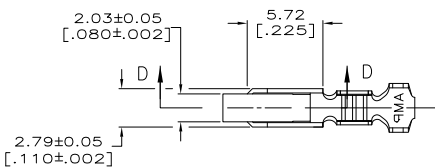
2

1

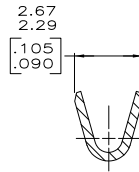
THIS DRAWING IS UNPUBLISHED. RELEASED FOR PUBLICATION
 © COPYRIGHT - By - ALL RIGHTS RESERVED.

LOC	DIST	REVISIONS			
P	LR	DESCRIPTION	DATE	BY	APPD
CM	00	E1	REVISED PER ECO-11-004820	11MAR11	RK HMR

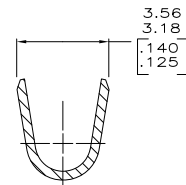
- △ 0.00203 [0.000080] MIN BRIGHT TIN-LEAD OVER
0.00127 [0.000050] MIN NICKEL.
- △ 0.00330 [0.000130] MAX PRE-TIN.
- 3. WIRE RANGE: 0.2-0.9mm² (24-18 AWG).
INSULATION RANGE: 2.79 [0.110] DIA MAX.
- 4. DIMENSIONS IN BRACKETS ARE IN INCHES.
- △ 0.00203 [0.000080] MIN BRIGHT TIN OVER
0.00127 [0.000050] MIN NICKEL.



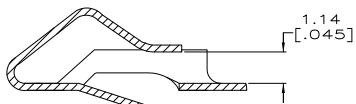
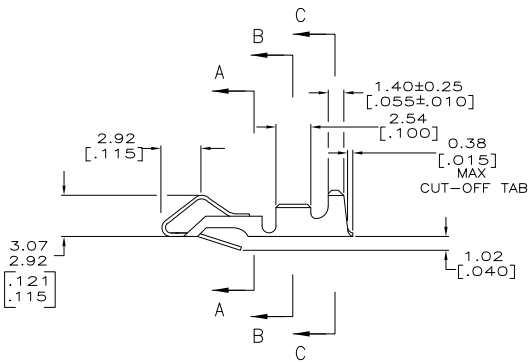
SECTION A-A
SCALE 10:1



SECTION B-B
SCALE 10:1



SECTION C-C
SCALE 10:1



SECTION D-D
SCALE 10:1



△	3-640706-1
△	640706-2
△	640706-1
FINISH	PART NO

DIMENSIONS:		DRAWN BY:		DATE:		APPROVED BY:		TITLE:	
INCHES		S. CARPENTER		21AUG2003		J. ELLIS		RECEPTACLE, SL-156, LOOSE PIECE	
OTHER DIMENSIONS:		J. ELLIS		21AUG2003		J. ELLIS		SIZE CASE CODE DRAWING NO	
0.13 [0.005]		PRODUCT SPEC		APPLICATION SPEC		A2 00779 C=640706		RESTRICTED TO	
MATERIAL: 0.33 [0.13] BRASS		FINISH: SEE TABLE		CUSTOMER DRAWING		SCALE: 5:1		SHEET: 1 of 1 REV: E1	