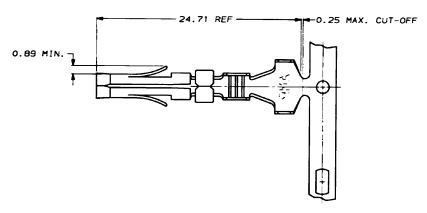
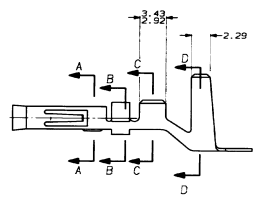
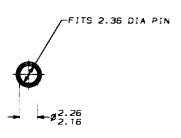


REV	DATE	DESCRIPTION	BY	APP'D
CM 53		REVISED PER EC 0730-4244-93		

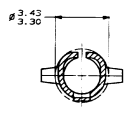


- INSULATION RANGE-(2) 4.57 MAX. WIRE RANGE-18-14 AWG.
- THIS CONTACT TO BE USED WITH HOUSINGS 770384-1, 770385-1, 770450-1, 770451-1, 770452-1 AND 770453-1 ONLY.

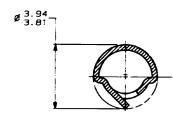


MM	IN	MM	IN
.973	24.71	.120	3.05
.365	9.27	.115	2.92
.265	6.73	.093	2.36
.250	6.35	.090	2.29
.180	4.57	.089	2.26
.155	3.94	.085	2.16
.150	3.81	.085	0.89
.140	3.56	.0725	0.3175
.135	3.43	.070	0.25
.130	3.30	.0625	0.19
IN	MM	IN	MM

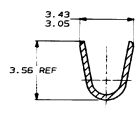
CONVERSION TABLE



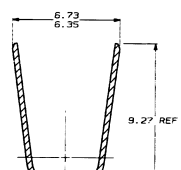
SECTION A-A
SCALE 10:1



SECTION B-B
SCALE 10:1



SECTION C-C
SCALE 10:1



SECTION D-D
SCALE 10:1

METRIC

DO NOT SCALE PRINT. UNLESS SPECIFIED DIMENSIONS IN MILLIMETERS SHALL BE TO NEAREST 0.13 (1/1000) INCHES.		OR 1-23-90	C. MARTIN	AMP INCORPORATED MILWAUKEE, WI 53186
0.318 PHOS BRZ	APPRO T. CASON R. CASON	DATE	NAME	
FINISH: PRE-TIN	APPLICATION SPEC	SIZE: FROM NO. D	DRAWING NO. 770383	PART NO. 770383-1
WEIGHT		SCALE: 5:1	SHEET 1 OF 1	CUSTOMER DRAWING