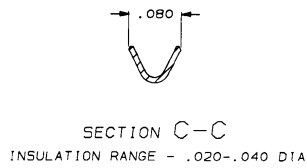
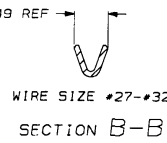
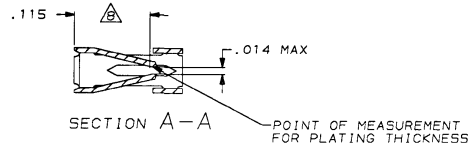
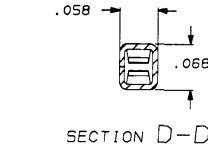
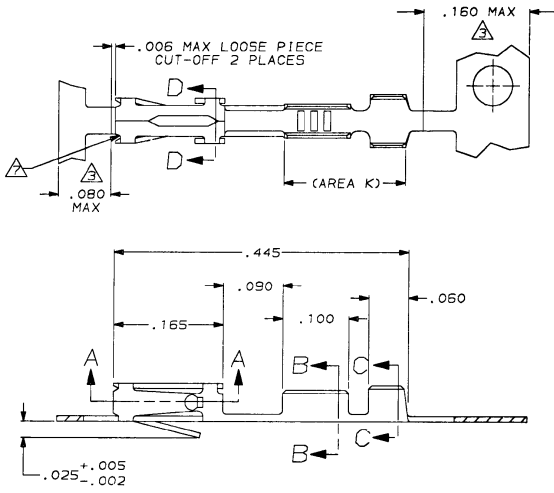


DRAWING MADE IN THIRD ANGLE PROJECTION

THIS DRAWING IS UNPUBLISHED. RELEASED FOR PUBLICATION .19
 © COPYRIGHT 19 BY AMP INCORPORATED, HARRISBURG, PA. ALL INTERNATIONAL RIGHTS RESERVED. AMP PRODUCTS MAY BE COVERED BY U.S. AND FOREIGN PATENTS AND/OR PATENTS PENDING.

REV	LOC	DIST	P	F	ZONE	LTR	DESCRIPTION	DATE	APPROVED
30	AD	39							
							REV PER ECN AR-2356	5/3/89	AF
							REV LOC & DIST AD-4171	3-90	BF
							REV PER AD-5350	2-20-91	-
							REV PER AD-5463	3-19-91	-
							OBS -8 PER 0010-1863-93	1-14-93	PS



- △ .000030 GOLD ON CONTACT AREA, GOLD FLASH ON REMAINDER OVER .000050 NICKEL
- 2. REELED FOR MINI APPLICATOR
- △ GOLD PLATING IS NOT REQUIRED IN THIS AREA
- △ HAND TOOL USED FOR CRIMPING L.P. CONTACT IS #90358-1
- △ .000015 GOLD ON CONTACT AREA, GOLD FLASH ON REMAINDER OVER .000050 NICKEL
- △ .000030 GOLD ON THE CONTACT AREA, .000100-.000200 93/7 BRIGHT TIN-LEAD IN AREA K, ALL OVER .000050 NICKEL
- △ CUT-OUTS ON THE BOX ARE AT MANUFACTURERS OPTION
- △ POINT OF MEASUREMENT FOR PLATING THICKNESS (INSIDE BEAMS)
- △ OBSOLETE PART NUMBER

LOOSE PIECE	△	△	△	102918-6
LOOSE PIECE	△	△	△	102918-5
LOOSE PIECE	△	△	△	102918-4
LOOSE PIECE	△	△	△	102918-3
LOOSE PIECE	△	△	△	102918-2
				102918-1

REMARKS	FINISH	PART NUMBER

UNLESS OTHERWISE SPECIFIED DIMENSIONS ARE IN INCHES TOLERANCES ON +	DR 5/3/89
	KATE HELM
2 PL DEC ± .005	CHK 6-2-89
	C. OBERMAN
ANGLES ± .	APPD 6-2-89
	J. GOSFORD
MATERIAL: BERYLLIUM COPPER, .008 THICK	APPD 6-6-89
	FLINCHBAUGH
FINISH: SEE TABLE	PRODUCT SPEC
	108-25021
WEIGHT	APPLICATION SPEC
	114-25003

AMP AMP INCORPORATED Harrisburg, Pa. 17105		
NAME CONTACT, MOD IV 1/2, PECEPTACLE, CRIMP SNAP-IN		
SIZE C	FSCM NO 00779	DRAWING NO 102918
SCALE 10:1	SHEET 1 OF 1	

AMP 1471-7 REV 10-84

14-JAN-94 11:33:16 cnp18171 /home/sp025a/dept1729/cnp18171/u.mod1v

CUSTOMER DRAWING

102918

A