

4

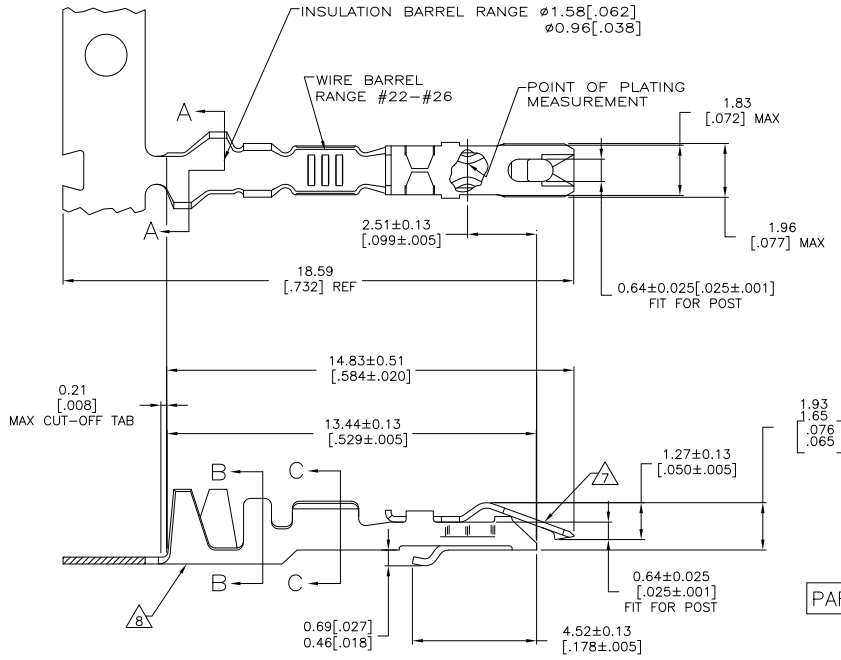
3

2

1

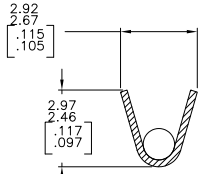
THIS DRAWING IS UNPUBLISHED. RELEASED FOR PUBLICATION. ALL RIGHTS RESERVED.

LOC	DIST	REVISIONS					
AD	00	F	LNK	DESCRIPTION	DATE	OWN	APPD
		S1		REVISED PER ECO-11-004820	11MAR11	RK	HMR

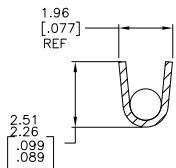


- △ REELED FOR MINI-APPLICATOR.
- △ REELED FOR STRIPPER CRIMPER.
- △ PLATED WITH 0.00076[.000030] GOLD IN CONTACT AREA, GOLD FLASH ON REMAINDER, OVER 0.00127[.000050] NICKEL.
- △ PLATED WITH 0.00127[.000050] GOLD IN CONTACT AREA, GOLD FLASH ON REMAINDER, OVER 0.00127[.000050] NICKEL.
- △ PLATED WITH 0.00254[.000100] TIN-LEAD OVER 0.00127[.000050] NICKEL - ENTIRE CONTACT.
- △ PLATED WITH 0.00127[.000050] GOLD OVER 0.00127[.000050] NICKEL - ENTIRE CONTACT.
- △ SPRING MATERIAL: STAINLESS STEEL.
- △ BODY MATERIAL: PHOS BRONZE - FINISH: SEE TABLE.
- △ PLATED WITH .000100 TIN OVER .000050 NICKEL OVER ENTIRE CONTACT.

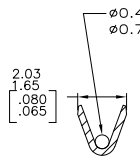
PART NUMBER 1-87124-2 SUPERCEDED BY 5-87124-2



A-A (ROTATED 90° CLOCKWISE)



B-B



C-C

Ø0.46[.018] MUST BOTTOM IN WIRE BARREL
Ø0.79[.031] MUST NOT BOTTOM IN WIRE BARREL.

REMARKS	BODY FINISH	PART NO (LOOSE PIECE)	PART NUMBER (STRIP)
△	△	5-87165-2	5-87124-2
△	△	-	-
OBSELETE	△	87165-1	1-87124-1
OBSELETE	△	87165-4	87124-4
	△	87165-3	87124-3
	△	87165-2	87124-2
	△	87165-1	87124-1

THIS DRAWING IS A CONTROLLED DOCUMENT.

DIMENSIONS:	mm [INCHES]	0 PLC ± .010	1 PLC ± .015	2 PLC ± .020	3 PLC ± .025	4 PLC ± .030	ANGLES ± .5°
MATERIAL:	SEE CALLOUT	FINISH:	SEE TABLE	DIM: C. BRANDBERG 23SEP94 CHK: S. SHUEY 23SEP94 D. DUPLER 23SEP94 PRODUCT SPEC: --- APPLICATION SPEC: --- WEIGHT: --- CUSTOMER DRAWING			

TE Connectivity
 CONTACT - LOCKING CLIP FOR 0.64[.025] SQUARE POST
 SIZE: A2 CASE CODE: C-87124
 SCALE: 10:1 SHEET: 1 of 1 REV: S1