

4

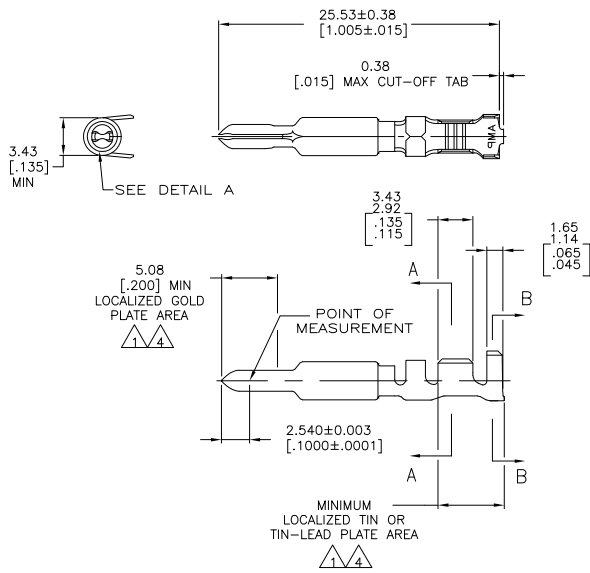
3

2

1

THIS DRAWING IS UNPUBLISHED. RELEASED FOR PUBLICATION  
 © COPYRIGHT BY TYCO ELECTRONICS CORPORATION. ALL RIGHTS RESERVED.

LOC	DIST	REVISIONS		
F	LTR	DESCRIPTION	DATE	BY
CM	00			
	E	EC 003B 0215 05	23SEP05	BSV/RCJ

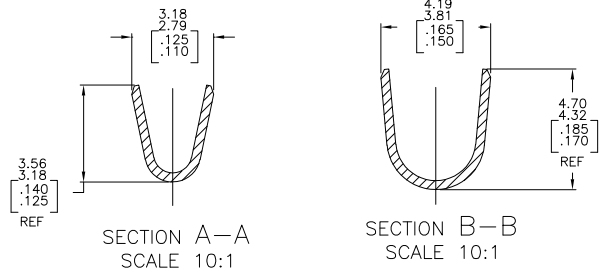
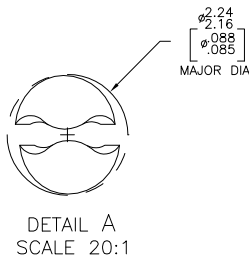


- 1. 0.00076[.000030] MIN GOLD AT POINT OF MEASUREMENT IN THE LOCALIZED GOLD PLATE AREA, 0.00127[.000050] MIN TIN-LEAD IN TIN-LEAD PLATE AREA, 0.00127[.000050] MIN NICKEL UNDERPLATE ON ENTIRE CONTACT.
  - 2. WIRE RANGE: 0.5-2mm<sup>2</sup> [20-14 AWG]. INSULATION RANGE: 1.52-3.30 [.060-.130] DIA.
  - 3. DIMENSIONS IN BRACKETS ARE IN INCHES.
- △ 0.00076[.000030] MIN GOLD AT POINT OF MEASUREMENT IN THE LOCALIZED GOLD PLATE AREA, 0.00127[.000050] MIN TIN IN TIN PLATE AREA, 0.00127[.000050] MIN NICKEL UNDERPLATE ON ENTIRE CONTACT.

3.43 [2.92] [0.135] [0.115] MIN  
 SEE DETAIL A

5.08 [2.00] MIN LOCALIZED GOLD PLATE AREA  
 △ 1/4

MINIMUM LOCALIZED TIN OR TIN-LEAD PLATE AREA  
 △ 1/4



GOLD	△	0.30	[.012]	BRASS	1-770250-0
GOLD	△	0.30	[.012]	BRASS	770250-2
PRE-TIN		0.30	[.012]	BRASS	770250-1
FINISH				MATERIAL	PART NUMBER

DIMENSIONS		TOLERANCES UNLESS OTHERWISE SPECIFIED		FINISH	
mm	[INCHES]	0 PLC	±	SEE TABLE	SEE TABLE
1 PLC	±	1 PLC	±		
2 PLC	±	2 PLC	±		
3 PLC	±	3 PLC	±		
4 PLC	±	4 PLC	±		
ANGLES	±	ANGLES	±		

THIS DRAWING IS A CONTROLLED DOCUMENT.		DRN	S. CARPENTER	21MAY03
DIMENSIONS		CHK		21MAY03
TOLERANCES UNLESS OTHERWISE SPECIFIED		APP'D		
FINISH		NAME	Tyco Electronics Corporation	
			Harrisburg, PA 17105-3608	
		PRODUCT SPEC	PIN, LOOSE PIECE, UNIVERSAL MATE-N-LOK(TM) II	
		APPLICATION SPEC	-	
		WEIGHT	-	
		SIZE	A2 00779 C=770250	
		RESTRICTED TO	-	
		CUSTOMER DRAWING	SCALE 4:1 SHEET 1 of 1 REV E	

