

DRAWING MADE IN THIRD ANGLE PROJECTION

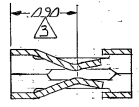
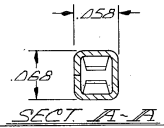
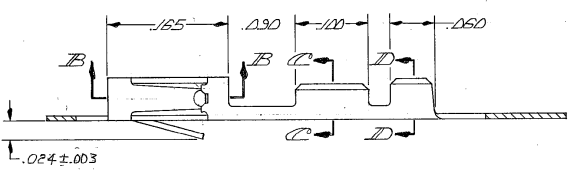
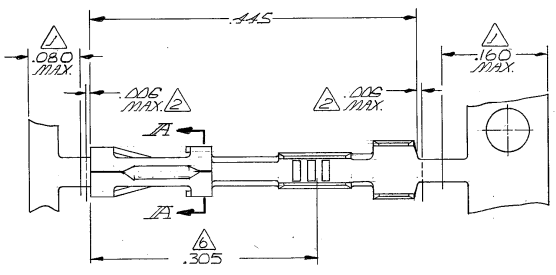
THIS DRAWING IS UNPUBLISHED. RELEASED FOR PUBLICATION

© COPYRIGHT 19 BY AMP INCORPORATED, HARRISBURG, PA. ALL INTERNATIONAL RIGHTS RESERVED. AMP PRODUCTS MAY BE COVERED BY U.S. AND FOREIGN PATENTS AND/OR PATENTS PENDING.

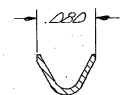
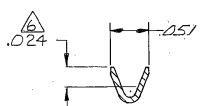
LOC 112 DIST 39

- 1 GOLD PLATING NOT REQUIRED IN THIS AREA.
- 2 LOOSE PIECE CUT-OFF DIMENSION.
- 3 POINT OF MEASUREMENT FOR PLATING THICKNESS (INSIDE BEAMS)
- 4 .00030 GOLD IN CONTACT AREA, GOLD FLASH ON REMAINDER OF TERMINAL, ALL OVER .00050 NICKEL.
- 5 .00100+.000200 BRIGHT TIN-LEAD OVER .00050 NICKEL.
- 6 POINT OF MEASUREMENT FOR PLATING THICKNESS (INSIDE BARREL)
- 7 OBSOLETE PART NO.

P	F	ZONE	LTR	DESCRIPTION	DATE	APPROVED
				RELEASED		
			01	REV PER ECN 208	WBL 2-24-88	WBL
			02	REV ECN 980	4/1/88	4/1/88
			03	REV ECN AR2021	11-28-88	11-28-88
			04	REV ECN AR2021	01-10-89	01-10-89
			05	REV LOC 4 DIST AD-4171	11-27-89	11-27-89
			06	REV PER AD-5350	2-18-91	2-18-91
			07	OBS -4 PER 0010-0376-93	1-13-93	1-13-93
			08	REV PER 0010-0312-96	1-21-97	1-21-97



SECT. B-B



SECT. C-C  
WIRE SIZE: RET. #32

SECT. D-D  
INSULATION RANGE:  
.040/.020

103455-2	103455-1
LOOSE PIECE	FINISH
PART NO	PART NO

UNLESS OTHERWISE SPECIFIED DIMENSIONS ARE IN INCHES.		CONTRACT NO		AMP INCORPORATED Harrisburg, Pa. 17105	
TOLERANCES ON: DECIMALS ± .005 ANGLES		DR	CHK	NAME CONTACT, MOD II, CRIMP SNAP-IN STRIP	
MATERIAL PHOS. BRONZE, .008 THICK.		APPD	APPD	SIZE C FSCM NO 00779 DRAWING NO 103455	
FINISH SEE TABLE		DSGN APPD	OTHER APPD	SCALE 10:1 SHEET J OF 1	

CUSTOMER DRAWING

103455