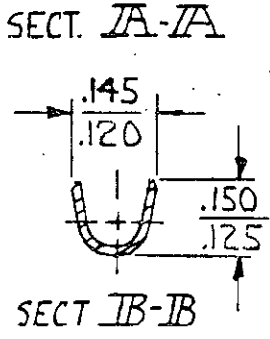
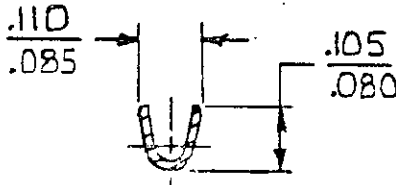
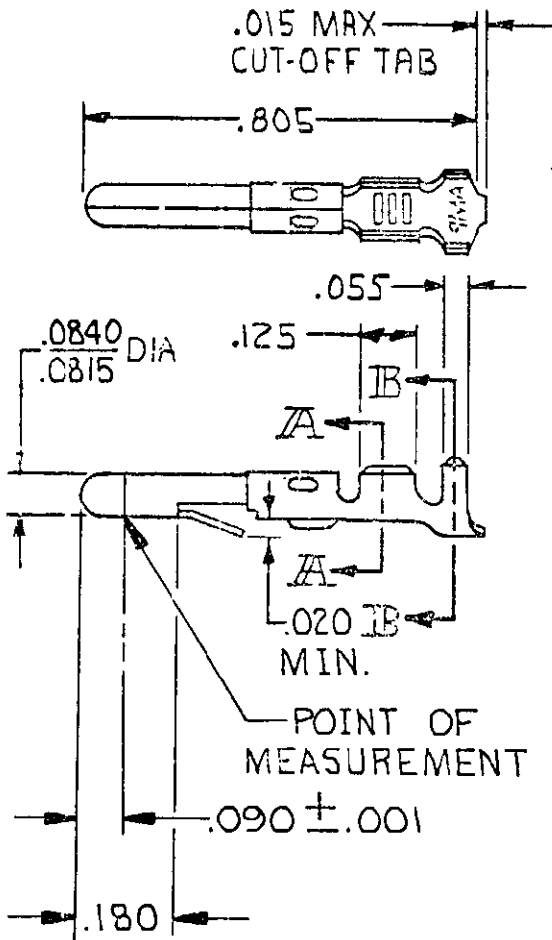


© COPYRIGHT 1965 BY AMP INCORPORATED, HARRISBURG, PA. ALL INTERNATIONAL RIGHTS RESERVED. AMP INCORPORATED PRODUCTS COVERED BY U.S. AND FOREIGN PATENTS AND /OR PATENTS PENDING.

REVISIONS				
LTR	DESCRIPTION	DATE	APPROVED	P F
N	REV PER CM-1734	8-17-88	PKC / RS	
P	REVISED PER CM-3285	2-12-91	PKC / RS	
R	OBSOLETE -2 PER CM 2708	1-11-93	TB / RS	
S	REV PER EC 0730-0142-94	8-15-94	RV / RS	



① .000030 GOLD INSIDE WIRE BARREL & ON TIP OF PIN; REMAINDER OF CONTACT IS NICKEL PLATED.

② .000050 NICKEL OVER ENTIRE CONTACT WITH .000030 GOLD OVER MATING AREA.

GOLD	②	.012 PH. BRZ	60613 -6
GOLD	①	BRASS	-5
PRE-TIN		PH. BRZ	-4
PRE-TIN		.012 BRASS	60618-1
FINISH		MATERIAL	PART NO

UNLESS OTHERWISE SPECIFIED DIMENSIONS ARE IN INCHES. TOLERANCES ON: DECIMALS ±.015 ANGLES ±	CONTRACT NO
	DR M. FEHER 11-26-79
MATERIAL SEE TABLE	CHK <i>D. Heide</i> 1/4/80
	APPD <i>M. Heide</i> 1-7-80
FINISH SEE TABLE	INSULATION DIA .100 MAX
	WIRE RANGE 24-18 AWG.

**AMP INCORPORATED**  
Harrisburg, Pa.

NAME **PIN, LOOSE PIECE, COMMERCIAL MATE-N-LOK**

SIZE <b>A</b>	CODE IDENT NO <b>00779</b>	DRAWING NO <b>60618</b>
SCALE	SHEET	