

4

3

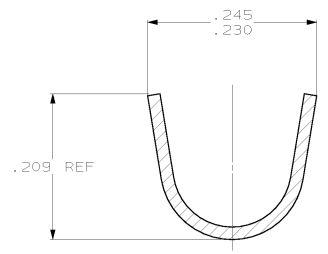
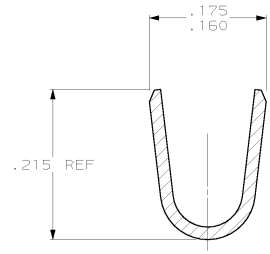
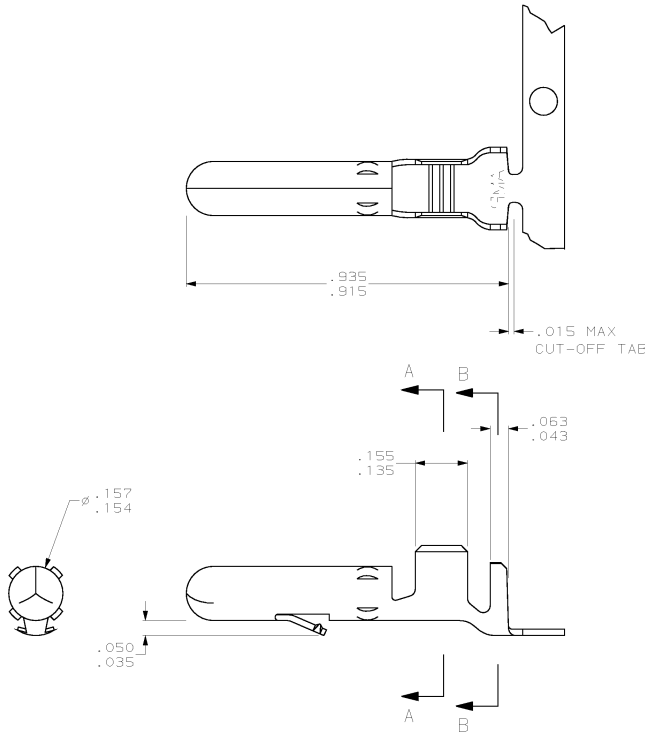
2

1

THIS DRAWING IS UNPUBLISHED. RELEASED FOR PUBLICATION  
 (C) COPYRIGHT IS BY AMP INCORPORATED. ALL RIGHTS RESERVED.

LOC	DIST	REVISIONS			
		REV	DESCRIPTION	DATE	BY
CM	53	K	REV PER EC 0618-0063-99	27-APR-99	JH

1. WIRE RANGE: 12-10 (3-6mm<sup>2</sup>) AWG  
 INSULATION RANGE: .185 MAX.



IN	MM	IN	MM	IN	MM	IN	MM
.050	1.27	.157	3.99	.230	5.84		
.043	1.09	.156	3.96	.215	5.46		
.035	0.89	.155	3.94	.209	5.31		
.018	0.46	.154	3.91	.185	4.70	.935	23.75
.015	0.38	.135	3.43	.175	4.45	.915	23.24
.005	0.13	.063	1.60	.160	4.06	.245	6.22

CONVERSION TABLE



TIN		.018 BRASS		61234-1	
FINISH		MATERIAL		PART NO	
THIS DRAWING IS A CONTROLLED DOCUMENT					
DRAWN BY		DATE		REV	
J. HUFFMAN		9-13-96		1	
C. SWING		9-13-96		2	
R. MARTIN		9-13-96		3	
PRODUCT SPEC		MATERIAL		PART NO	
-		.156		P1N, MATE-N-LOK™	
APPLICATION SPEC		SIZE		CASE CODE	
-		A2		00779	
MATERIAL		FINISH		WEIGHT	
SEE TABLE		SEE TABLE		-	
CUSTOMER DRAWING					
				SCALE	
				5:1	
				SHEET	
				1 OF 1	
				REV	
				K	

AMP 1471-9 REV 23F8955  
 27-APR-99 11:57:02 amp18726 /home/amp18726/colrad

61234  
 B