

4

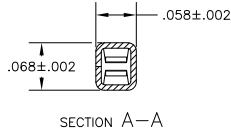
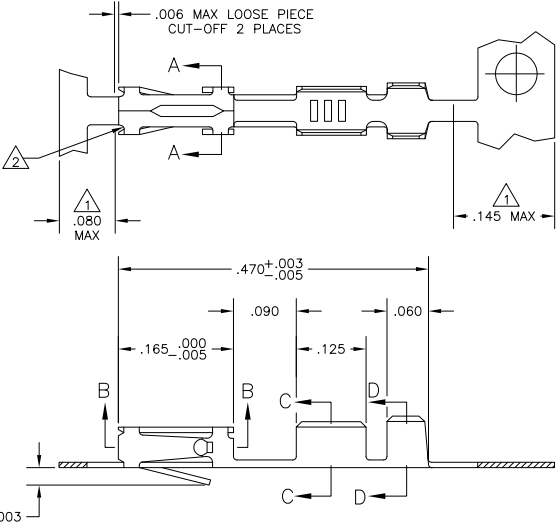
3

2

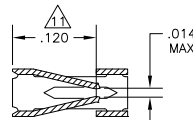
1

THIS DRAWING IS UNPUBLISHED. RELEASED FOR PUBLICATION. ALL RIGHTS RESERVED.

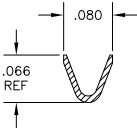
LOC	DIST	REVISIONS			
P	LTR	DESCRIPTION	DATE	BY	APPD
AD2		REVISED PER ECO-11-004820	11MAR11	RK	HMR



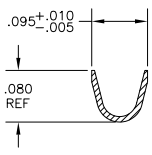
SECTION A-A



SECTION B-B



WIRE SIZE #24-#20  
SECTION C-C



INSULATION RANGE .069 MAX  
SECTION D-D

- 1 GOLD PLATING IS NOT REQUIRED IN THIS AREA.
- 2 CUT-OUTS ON THE BOX ARE AT MANUFACTURERS OPTION.
- 3 THIS TERMINAL IS REELED FOR THE STANDARD APPLICATOR.
- 4 THIS TERMINAL IS REELED FOR THE MINI APPLICATOR.
- 5 .000030 GOLD OVER .000050 NICKEL.
- 6 .000030 GOLD ON THE CONTACT AREA, GOLD FLASH ON THE REMAINDER ALL OVER .000050 NICKEL.
- 7 PREPLATED:(HALT).000078-.000158 BRIGHT TIN
- 8 .000050 GOLD OVER .000050 NICKEL.
- 9 .000015 GOLD ON THE CONTACT AREA, GOLD FLASH ON THE REMAINDER ALL OVER .000050 NICKEL.
- 10 .000050 GOLD ON THE CONTACT AREA, GOLD FLASH ON THE REMAINDER ALL OVER .000050 NICKEL.
- 11 POINT OF MEASUREMENT FOR PLATING THICKNESS (INSIDE BEAMS).
- 12 .000015 GOLD IN CONTACT AREA, .000050 NICKEL ON ENTIRE TERMINAL
- 13 OBSOLETE PART NUMBER.
- 14 OBSOLETE PARTS: OBSOLETE CIS STREAMLINING PER D.RENAUD/D.SINISI

4	3	2	1	-7	2-	1	-0
3	4	10	10	-6	1-	1	-8
3	4	6	7	-6	1-	1	-7
4	4	6	7	86016-4	1-	1	85969-0
4	4	6	7	86016-3			85969-9
4	4	6	7	86016-2			85969-8
4	4	6	7	86016-1			85969-7
4	4	6	7	86016-5			85969-6
4	4	6	7	86016-5			85969-5
3	3	8	9	86016-4	1-	1	85969-4
3	3	6	7	86016-3			85969-3
3	3	6	7	86016-2			85969-2
3	3	6	7	86016-1			85969-1

SUPERSEDED BY 85969-4

REMARKS	FINISH	LOOSE PIECE PART NUMBER	PART NUMBER

THIS DRAWING IS A CONTROLLED DOCUMENT.		BY: L.D.RINGLEY 100E085	TE Connectivity	
DRAWN: J.L.GESFORD 160E085		CHK: J.L.GESFORD 160E085	CONTACT, MOD IV, RECEPTACLE, CRIMP SNAP-IN	
DIMENSIONS: INCHES		APPROVED: J.L.GESFORD 160E085	SIZE: A2	
TOLERANCES UNLESS OTHERWISE SPECIFIED:		PRODUCT SPEC: 108-25.020	DRAWING NO: C-85969	
0 PLC ± .005		APPLICATION SPEC: 114-25.003	CAGE CODE: 00779	
1 PLC ± .005		HEIGHT: -	RESTRICTED TO: -	
2 PLC ± .005			CUSTOMER DRAWING	
3 PLC ± .005			SCALE: 10:1	
4 PLC ± .005			SHEET: 1 of 1	
ANGLES ± .5			REV: AD2	
FINISH: SEE TABLE				
MATERIAL: BERYLLIUM COPPER, .008 THICK				

85969

B

A