

4

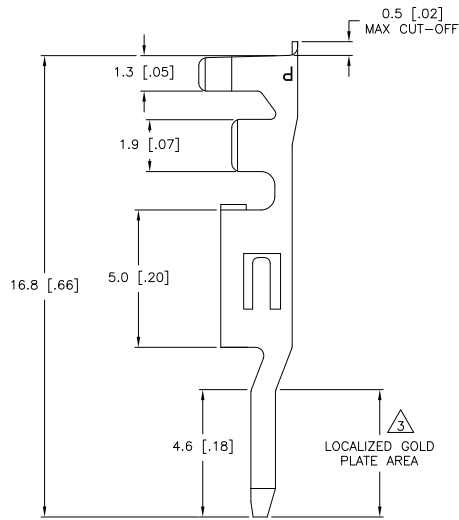
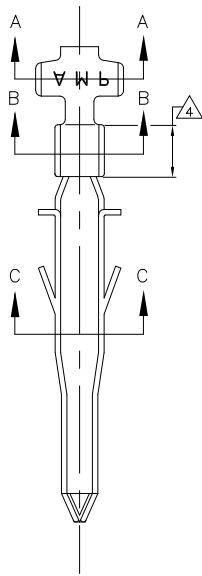
3

2

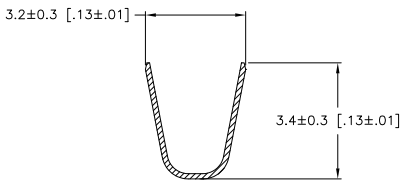
1

THIS DRAWING IS UNPUBLISHED. RELEASED FOR PUBLICATION. ALL RIGHTS RESERVED.

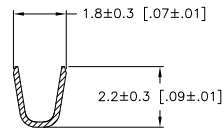
LOC	DIST	REVISIONS		
F	LNK	DESCRIPTION	DATE	BY
CM	00			
	A1	REVISED PER ECO-11-004917	11MAR11	RK HMR



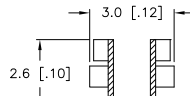
- 1 WIRE RANGE: 0.13-0.32mm<sup>2</sup> (26-22 AWG).
- 2 INSULATION RANGE: 1.20-1.75 DIA.
- 3 FINISH: 0.76μm MINIMUM GOLD IN LOCALIZED GOLD PLATE AREA OVER 1.27μm MINIMUM NICKEL
- 4 FINISH: 2.54μm MINIMUM TIN IN LOCALIZED TIN PLATE AREA.



SECTION A-A



SECTION B-B



SECTION C-C

3/4	PHOS. BRZ.	1586316-4
	PRE-TIN	PHOS. BRZ.
	PHOS. BRZ.	1586316-3
3/4	BRASS	1586316-2
	PRE-TIN	BRASS
	BRASS	1586316-1
	FINISH:	MATERIAL:
		PART NO.

THIS DRAWING IS A CONTROLLED DOCUMENT.		DRW	14-OCT-2003
DIMENSIONS:		S. HOOVER	14-OCT-2003
mm [INCHES]		CHK. D. COLEY	14-OCT-2003
TOLERANCES UNLESS OTHERWISE SPECIFIED:		D. COLEY	14-OCT-2003
0 PLG	±	NAME	
1 PLG	± 0.3(.01)	TE Connectivity	
2 PLG	± 0.15 (.006)	TERMINAL LOOSE PIECE, PIN	
3 PLG	± 0.050 [.0020]	VAL-U-LOK(TM)	
4 PLG	±	APPLICATION SPEC:	
ANGLES	±	SIZE	CAGE CODE
		A2	00779
MATERIAL	FINISH	DRAWING NO.	1586316
		RESTRICTED TO	
		CUSTOMER DRAWING	SCALE 10:1 SHEET 1 of 1 REV A1