

4

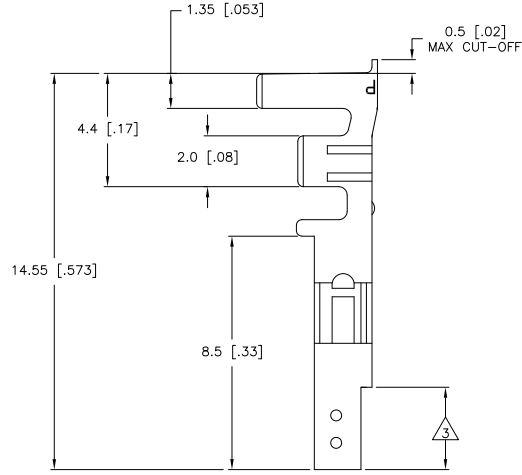
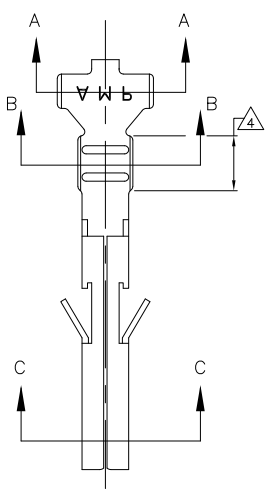
3

2

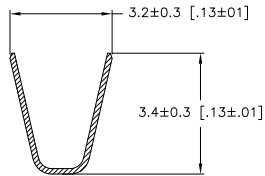
1

THIS DRAWING IS UNPUBLISHED. RELEASED FOR PUBLICATION. ALL RIGHTS RESERVED.

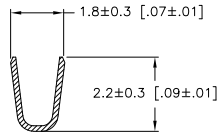
LOC	DIST	REVISIONS			
F	LNK	DESCRIPTION	DATE	BY	APPD
CM	00				
	A1	REVISED PER ECO-11-005027	11MAR11	RK	HMR



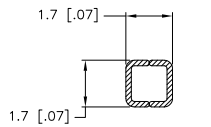
- 1 WIRE RANGE: 0.13-0.32mm² (22-26 AWG).
- 2 INSULATION RANGE: 1.20-1.75 DIA.
- 3 FINISH: 0.76μm MIN GOLD OVER 1.27μm MIN NICKEL REQUIRED ON INNER SURFACE, PERMITTED ON OUTER SURFACE.
- 4 FINISH: 2.54μm MIN TIN ON ALL SURFACES IN THIS AREA.



SECTION A-A



SECTION B-B



SECTION C-C

GOLD $\triangle 3 \triangle 4$	PHOS. BRZ.	1586317-4
PRE-TIN	PHOS. BRZ.	1586317-3
GOLD $\triangle 3 \triangle 4$	BRASS	1586317-2
PRE-TIN	BRASS	1586317-1
FINISH:	MATERIAL:	PART NO.

DIMENSIONS:		TOLERANCES UNLESS OTHERWISE SPECIFIED:		FINISH:	
mm	[INCHES]	0	PLC	#	
		1	PLC	± 0.3 [p1]	
		2	PLC	± 0.15 [504]	
		3	PLC	± 0.050 [0020]	
		4	PLC	#	
			ANGLES	#	

THIS DRAWING IS A CONTROLLED DOCUMENT.		DRN	S. HOOVER	14-OCT-2003		
		CHK	D. COLEY	14-OCT-2003		
		APP	D. COLEY	14-OCT-2003		
		NAME	D. COLEY			
		PRODUCT SPEC	APPLICATION SPEC			
MATERIAL		WEIGHT	SIZE	CAGE CODE	DRAWING NO	RESTRICTED TO
FINISH			A2	00779	C=1586317	-
CUSTOMER DRAWING		SCALE	10:1	SHEET	1 of 1	REV A1

1471-9 (3/11)

1586317

A