

4

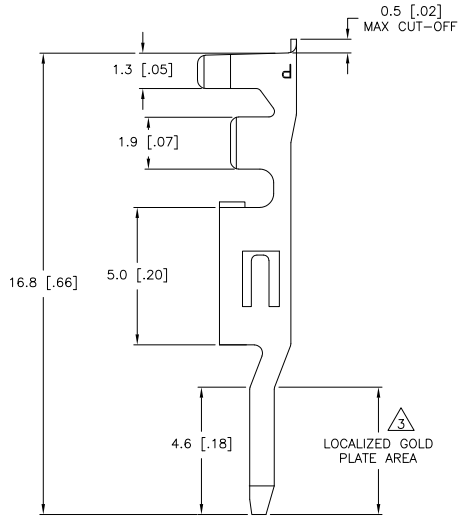
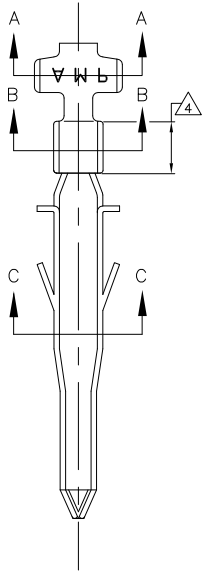
3

2

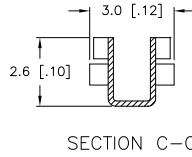
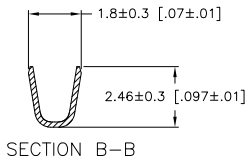
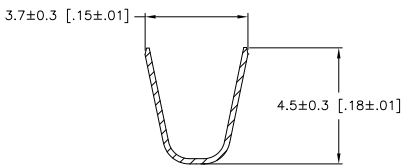
1

THIS DRAWING IS UNPUBLISHED. RELEASED FOR PUBLICATION. ALL RIGHTS RESERVED.

LOC	DIST	REVISIONS			
F	LNK	DESCRIPTION	DATE	BY	APPD
CM	00				
	C1	REVISED PER ECO-11-004917	11MAR11	RK	HMR



- 1 WIRE RANGE: 0.2-0.8mm<sup>2</sup> (24-18 AWG).
- 2 INSULATION RANGE: 1.50-2.40 DIA.
- 3 FINISH: 0.76μm MINIMUM GOLD IN LOCALIZED GOLD PLATE AREA OVER 1.27μm MINIMUM NICKEL
- 4 FINISH: 2.54μm MINIMUM TIN IN LOCALIZED TIN PLATE AREA.



3 4	PHOS. BRZ.	1586314-4
PRE-TIN	PHOS. BRZ.	1586314-3
3 4	BRASS	1586314-2
PRE-TIN	BRASS	1586314-1
FINISH:	MATERIAL:	PART NO.

THIS DRAWING IS A CONTROLLED DOCUMENT.		DATE		TE Connectivity	
DIMENSIONS:	mm [INCHES]	DRW	S. HOOVER	14-OCT-2003	
TOLERANCES UNLESS OTHERWISE SPECIFIED:		CHK	D. COLEY	14-OCT-2003	
0	PLC	D	D. COLEY	14-OCT-2003	
1	PLC	NAME			
2	PLC	PRODUCT SPEC			
3	PLC	APPLICATION SPEC			
4	PLC	SIZE			
ANGLES		CAGE CODE			
FINISH		DRAWING NO			
		A2 00779 C=1586314			
		RESTRICTED TO			
		CUSTOMER DRAWING			
		SCALE 10:1 SHEET 1 of 1 REV C1			

1471-9 (3/11)

1586314

A