

DRAWING MADE IN THIRD ANGLE PROJECTION

3

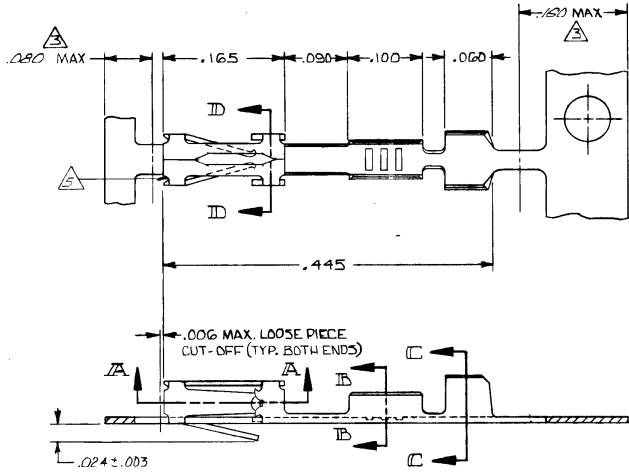
2

1

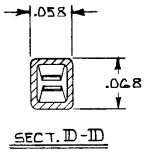
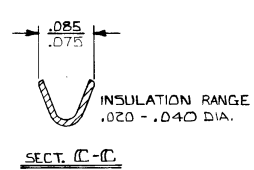
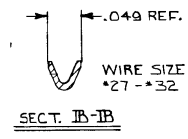
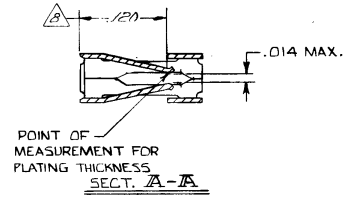
LOC AD 33

THIS DRAWING IS UNPUBLISHED. RELEASED FOR PUBLICATION MARCH 12, 1982.
 © COPYRIGHT 1982 BY AMP INCORPORATED, HARRISBURG, PA. ALL INTERNATIONAL RIGHTS RESERVED. AMP PRODUCTS MAY BE COVERED BY U.S. AND FOREIGN PATENTS AND/OR PATENTS PENDING.

REVISIONS					
P	F	ZONE/LTR	DESCRIPTION	DATE	APPROVED
		O	RELEASE		
			REV. E.C.N. 1821	11-18-81	AK
			REV. E.C.N. 1826	11-18-81	AK
			REV. E.C.N. 1828	11-18-81	AK
			REV. E.C.N. 1830	11-18-81	AK
			REV. E.C.N. 1841	11-18-81	AK
			REV. E.C.N. 1169	11-18-81	AK
			REV. E.C.N. 1821	11-18-81	AK
			REV. E.C.N. 2039 AR 2120	11-18-81	AK
			REV. LOC. 4 DIST. AD-4171	11-18-81	AK
			SUPSD PER 0010-1000-93	11-18-81	AK
			OBS -7 PER 0010-1523-73	11-18-81	AK
			REV PER 0010-1598-35	11-18-81	AK
			OBS -15 PER 0010-0591-96	12-31-90	JH/JS
			OBS -15 PER 0310-0169-96	12-31-90	JH/JS
			OBS -12 PER 0010-0667-96	12-31-90	JH/JS
			REV PER 0G3C-0189-00	08MAY00	DLS
			REVISED PER ECO-09-022178	22SEP04	AKK AEG



- △ .00030 GOLD ON CONTACT AREA, GOLD FLASH ON REMAINDER, OVER .000050 NICKEL.
- △ .00015 GOLD ON CONTACT AREA, GOLD FLASH ON THE REMAINDER, OVER .000050 NICKEL.
- △ GOLD PLATING NOT REQUIRED IN THIS AREA.
- △ .000100-.000200 BRIGHT TIN OVER .000030 NICKEL.
- △ CUT OUTS ON BOX AT MANUFACTURER'S OPTION.
- △ .000050 GOLD ON CONTACT AREA, GOLD FLASH ON THE REMAINDER, OVER .000050 NICKEL.
- △ .000015 GOLD ON CONTACT AREA, .000050 NICKEL OVER THE ENTIRE TERMINAL.
- △ POINT OF MEASUREMENT FOR PLATING THICKNESS INSIDE BEAMS?
- △ OBSOLETE PART NUMBER.
- △ SUPERSEDED BY 102917-2.
- △ OBSOLETE PARTS: OBSOLETE CIS STREAMLINING PER D.RENAUD/D.SINISI



OBSOLETE	1-102917-4	1-102917-3
OBSOLETE	1-102917-2	1-102917-1
	102917-6	102917-5
OBSOLETE	102917-4	102917-3
	102917-2	102917-1
	LOOSE PIECE PART NO.	FINISH
		PART NO

UNLESS OTHERWISE SPECIFIED DIMENSIONS ARE IN INCHES. TOLERANCES ON: DECIMALS ± .005 ANGLES ± .005		CONTRACT NO		AMP AMP INCORPORATED Harrisburg, Pa. 17105	
MATERIAL BERYLLIUM COPPER .008 THK.		DR S. A. Cool 4/15/82		NAME CONTACT, FEMALE, MOD IV, CRIMP SNAP-IN	
FINISH SEE TABLE		CHRS J. J. Dwyer 11/15/88		SIZE C 00779	
		APPD J. White 3/25/82		DRAWING NO 102917	
		APPD J. M. Yarnall 3/26/82		SCALE	
		OTHER APPD		SHEET 1 OF 1	

CUSTOMER DRAWING

AMP 1471-6 REV 2-81

118201