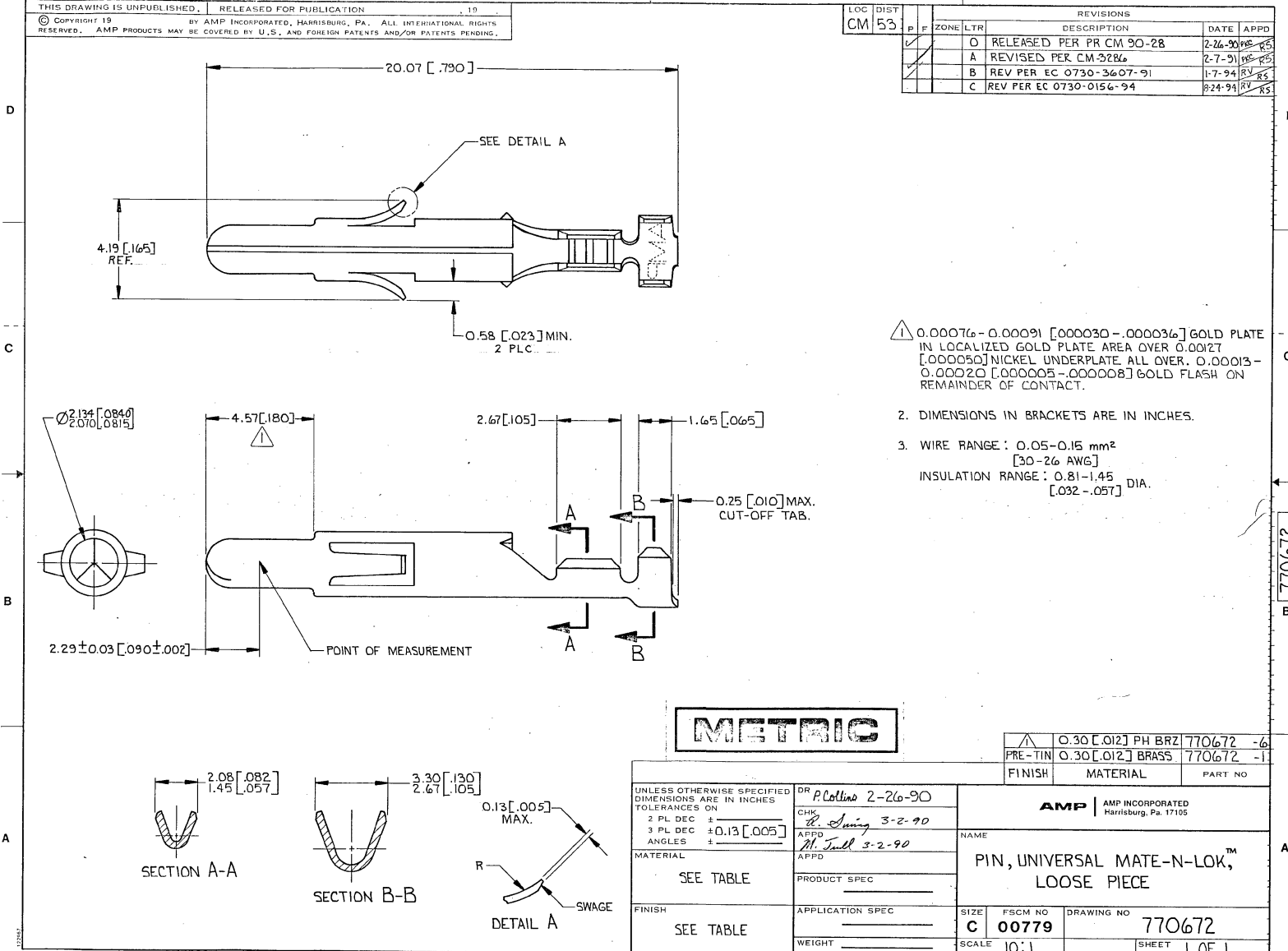


THIS DRAWING IS UNPUBLISHED. RELEASED FOR PUBLICATION
 © COPYRIGHT 19 BY AMP INCORPORATED, HARRISBURG, PA. ALL INTERNATIONAL RIGHTS RESERVED. AMP PRODUCTS MAY BE COVERED BY U.S. AND FOREIGN PATENTS AND/OR PATENTS PENDING.

LOG	DIST	ZONE	LTR	DESCRIPTION	DATE	APPD
CM	53			O RELEASED PER PR CM 90-28	2-26-90	RS
				A REVISED PER CM 3286	2-7-91	RS
				B REV PER EC 0730-3607-91	1-7-94	RS
				C REV PER EC 0730-0156-94	8-24-94	RS



- 1. 0.00076 - 0.00091 [.000030 - .000036] GOLD PLATE IN LOCALIZED GOLD PLATE AREA OVER 0.00127 [.000050] NICKEL UNDERPLATE ALL OVER. 0.00013 - 0.00020 [.000005 - .000008] GOLD FLASH ON REMAINDER OF CONTACT.
- 2. DIMENSIONS IN BRACKETS ARE IN INCHES.
- 3. WIRE RANGE: 0.05 - 0.15 mm² [30 - 26 AWG]
 INSULATION RANGE: 0.81 - 1.45 [.032 - .057] DIA.

METRIC

△	0.30 [.012] PH BRZ	770672 -6
	PRE-TIN 0.30 [.012] BRASS	770672 -1
FINISH	MATERIAL	PART NO

UNLESS OTHERWISE SPECIFIED DIMENSIONS ARE IN INCHES TOLERANCES ON:		DR <i>P. Collins 2-26-90</i>	AMP AMP INCORPORATED Harrisburg, Pa. 17105	
2 PL DEC ±		CHK <i>22. Spring 3-2-90</i>	NAME	
3 PL DEC ± 0.13 [.005]		APPD <i>M. Tull 3-2-90</i>	PIN, UNIVERSAL MATE-N-LOK™ LOOSE PIECE	
ANGLES ±		MATERIAL	PRODUCT SPEC	
SEE TABLE		FINISH	APPLICATION SPEC	SIZE C FSCM NO 00779 DRAWING NO 770672
SEE TABLE		WEIGHT	SCALE 10:1	SHEET 1 OF 1

AMP 1471-7 REV 10-84

CUSTOMER DRAWING