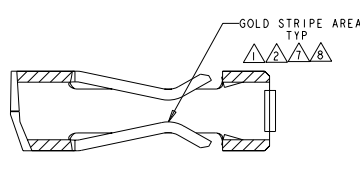
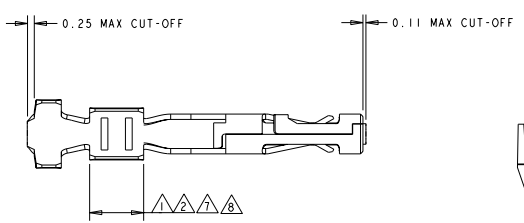


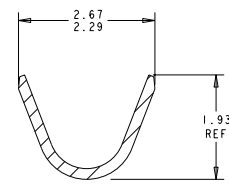
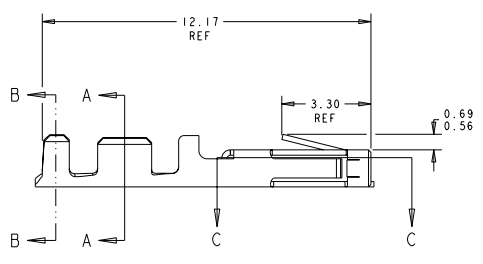
THIS DRAWING IS UNPUBLISHED. RELEASED FOR PUBLICATION
 BY TYCO ELECTRONICS CORPORATION. ALL RIGHTS RESERVED.

LOC		DIST		REVISIONS			
P	DATE	DESCRIPTION	DATE	BY	APPD		
D		REVISED PER ECO-05-008025	10JAN06	KW	CJ		

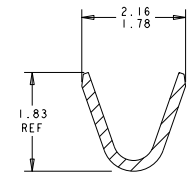


SECTION C-C
SCALE 20:1

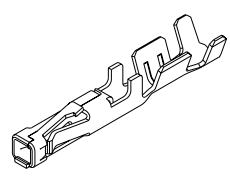
- 1. 0.000762 THK GOLD STRIPE IN THE GOLD PLATE AREA, BRIGHT TIN IN THE CRIMP AREA, OVER NICKEL PLATE.
- 2. 0.000381 THK GOLD STRIPE IN THE GOLD PLATE AREA, BRIGHT TIN IN THE CRIMP AREA, OVER NICKEL PLATE.
- 3. 0.0015 - 0.0040 THK BRIGHT TIN.
- 4. WIRE RANGE: 20 - 24 AWG.
- 5. INSULATION RANGE 0.89 - 1.524.
- 6. 0.000762 THK GOLD STRIPE IN THE GOLD PLATE AREA, BRIGHT TIN-LEAD IN THE CRIMP AREA, OVER NICKEL PLATE.
- 7. 0.000381 THK GOLD STRIPE IN THE GOLD PLATE AREA, BRIGHT TIN-LEAD IN THE CRIMP AREA, OVER NICKEL PLATE.
- 8. 0.000381 THK GOLD STRIPE IN THE GOLD PLATE AREA, BRIGHT TIN-LEAD IN THE CRIMP AREA, OVER NICKEL PLATE.



SECTION B-B
SCALE 20:1



SECTION A-A
SCALE 20:1



3 DIMENSIONAL VIEW
SCALE 8:1

1	1-794610-2
2	1-794610-1
3	794610-3
4	794610-2
5	794610-1
FINISH	PART NUMBER

METRIC

DIMENSIONS:		TOLERANCES UNLESS OTHERWISE SPECIFIED:		DATE		DRAWN BY		CHECKED BY		APPROVED BY	
mm		0 PLC	±	13-OCT-1999	K. WHITAKER		K. COBLE		AMP Incorporated		
		1 PLC	±	9-OCT-1999	K. COBLE		K. COBLE		Harrisburg, PA 17105-3600		
		2 PLC	±								
		3 PLC	±								
		4 PLC	±								
		FINISH	±								
MATERIAL		SEE TABLE		WEIGHT		SIZE		CASE CODE		DRAWING NO	
0.2 PH BRZ		SEE TABLE		-		A200779		C=794610		RESTRICTED TO	
				CUSTOMER DRAWING		SCALE		10:1		SHEET 1 OF 1	